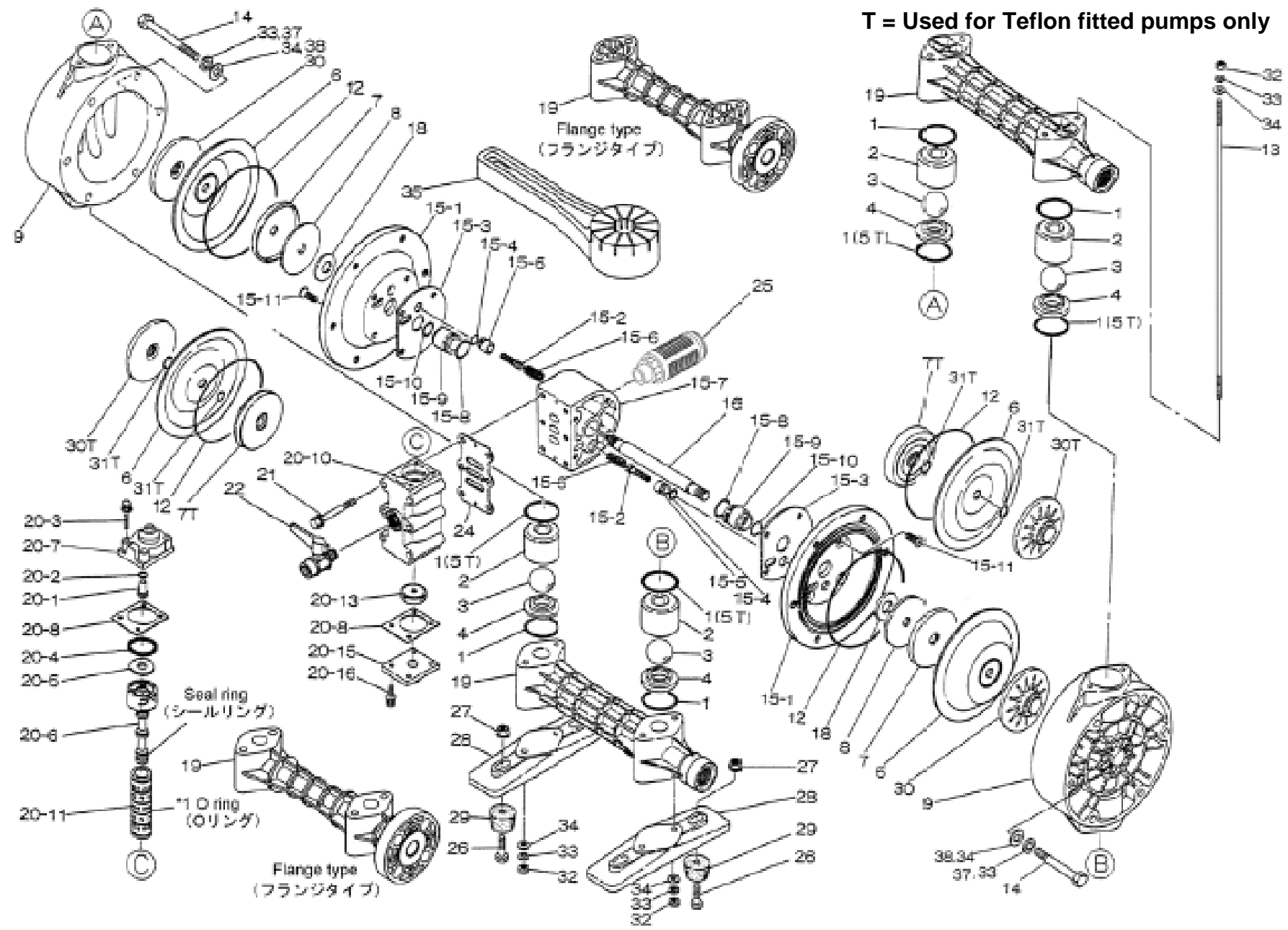


T = Used for Teflon fitted pumps only



Yamada America, Inc.
 955 East Algonquin Rd
 Arlington Heights, IL 60005
 Phone: 847.631.9200
 Fax: 847.631.9273
 www.yamadapump.com

Model: NDP-20BPS
Part # 852695 - NPT
Part # 853834 - Flange
Yamada®

Reference			
No.	Description	Q'ty	NDP-20BPS
1	O-ring	8	684116
2	Valve Stopper	4	771216
3	Ball	4	773170
4	Valve Seat	4	780137
6	Diaphragm	2	771973
7	Center Disk	2	709153
8	Plain Washer	2	709152
9	Out Chamber	2	780134
12	O-ring	2	640151
13	Tie Rod	4	710122
14	Bolt	12	621163
15	Body Assembly*	1	803637
16	Center Rod	1	710252
18	Cushion	2	771054
19	Manifold - NPT	2	780010
19	Manifold - Flange	2	780208
20	Valve Body Assembly*	1	802809
21	Bolt	6	682265
22	Ball Valve	1	683055
23	Bushing	1	711722
24	Gasket	1	771056
25	Silencer	1	682515
26	Bolt	4	611151
27	Nut with Flange	4	682276
28	Pump Base	2	771219
29	Cushion	4	770551
30	Center Disk	2	780123
32	Nut	8	683635
33	Spring Lock Washer	20	681300
34	Plain Washer	20	631329
35	Accessory Tool	2	771244

Body Assembly - 803637			
Reference			
No.	Description	Q'ty	
15-1	Air Chamber	2	715938
15-2	Pilot Valve Assembly	2	802360
15-3	Gasket	2	771057
15-4	O-ring	2	640009
15-5	Valve Seat	2	771945
15-6	Spring	2	708666
15-7	Body	1	711503
15-8	O-ring	2	685276
15-9	Throat Bearing	2	772703
15-10	Packing	2	685414
15-11	Flat Head Bolt	8	682486

Repair Kits			
K20-PS Liquid Side Repair Kit			
1	O-ring	8	684116
3	Ball	4	773170
6	Diaphragm	2	771973
K225-AM Air Side Repair Kit			
18	Cushion	2	771054
24	Gasket	1	771056
15-2	Pilot Valve Assy.	2	802360
15-3	Gasket	2	771057
15-4	O-ring	2	640009
15-5	Valve Seat	2	771945
15-6	Spring	2	708666
15-8	O-ring	2	685276
15-9	Throat Bearing	2	772703
15-10	Packing	2	685414
20-2	O-ring	1	640005
20-4	Packing	1	771241
20-6-seal	Seal Ring	5	771053
20-8	Gasket	2	771240
20-11-*1	O-ring	6	771080
20-13	Cushion	1	771914

Valve Body Assembly - 802809			
Reference			
No.	Description	Q'ty	
20-1	Rest Button	1	709161
20-2	O-ring	1	640005
20-3	Bolt	4	682704
20-4	Packing	1	771241
20-5	Plain Washer	1	715961
20-6	C Spool Valve Assy.	1	802400
20-6-seal	Seal Ring	5	771053
20-7	Cap	1	711219
20-8	Gasket	2	771240
20-10	Valve Body	1	711640
20-11	Sleeve Assembly	1	803931
20-11-*1	O-ring	6	771080
20-13	Cushion	1	771914
20-15	Cap	1	711212
20-16	Bolt	4	682262

Yamada America, Inc.
 955 East Algonquin Rd
 Arlington Heights, IL 60005
 Phone: 847.631.9200
 Fax: 847.631.9273
 www.yamadapump.com