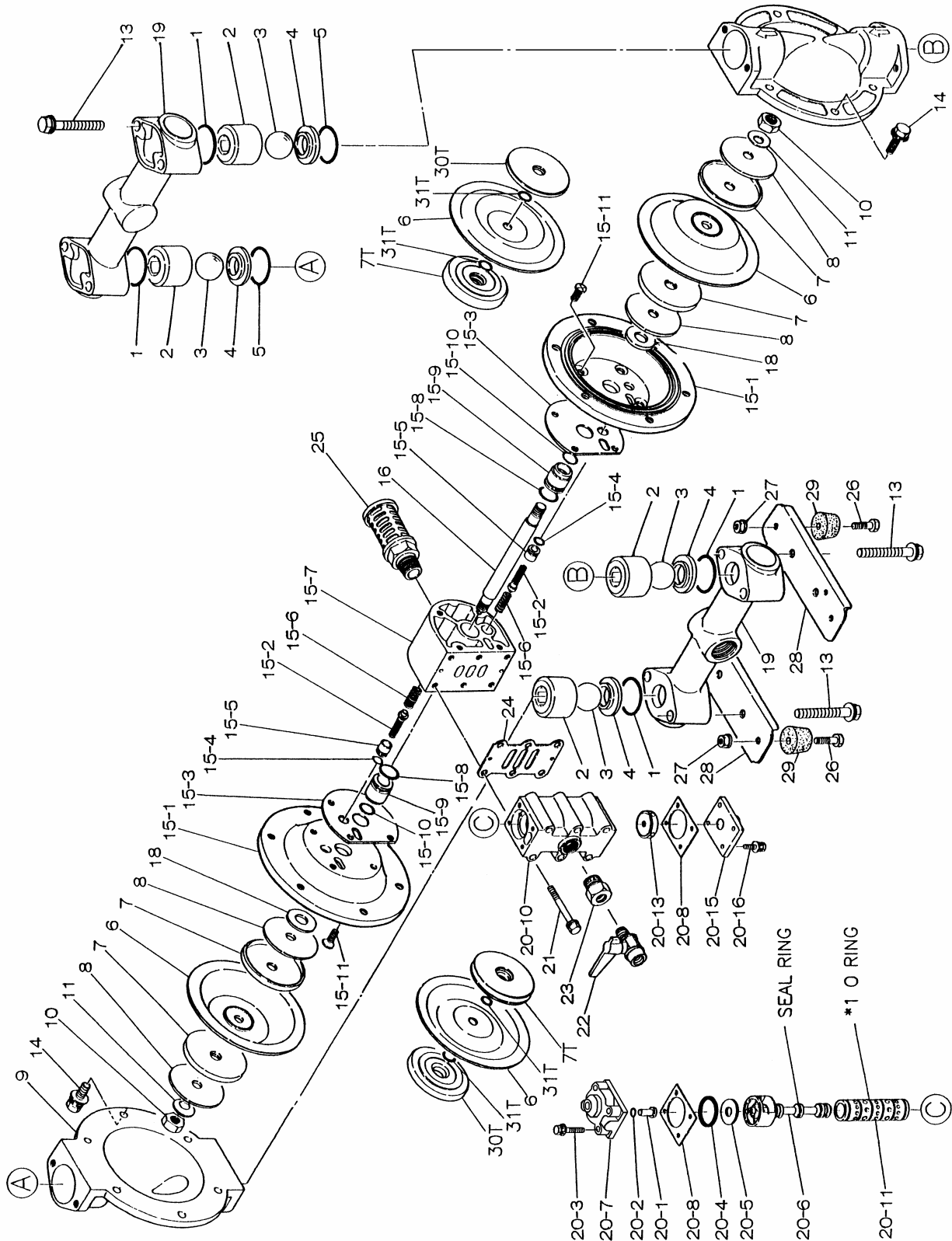


9. Exploded View and Parts List

9.1 Exploded View

■ NDP-20-25BA □, BS □, BF □



9.1 Parts List

■NDP-20-25BA□,BS□,BF□

NO.	20BA□	20BS□	25BA□	25BS□	25BF□	DESCRIPTION	Q'TY	NOTE
1	Tab.1	Tab.1	Tab.1	Tab.1	Tab.1	O RING	4	
2	711700	711701	711702	711703	711703	VALVE STOPPER	4	
3	Tab.4	Tab.4	Tab.4	Tab.4	Tab.4	BALL	4	
4	590086	711705	590087	711707	590087	VALVE SEAT	4	
5	Tab.5	Tab.5	Tab.6	Tab.6	Tab.6	O RING	2	
6	Tab.7	Tab.7	Tab.7	Tab.7	Tab.7	DIAPHRAGM	2	
7	709153	709153	709151	709151	709151	CENTER DISK	4	
7T	709456	709456	709459	709459	709459	CENTER DISK	2	
8	709152	709152	709150	709150	709150	PLAIN WASHER	4	EXCLUDED B□T
9	711686	711693	711687	711694	711695	OUT CHAMBAR	2	
10	682263	682263	682263	682263	682263	NUT	2	M14x1.5
11	682730	682730	682730	682730	682730	CONED DISK SPRING	2	M14
13	682264	682727	682267	682728	682267	BOLT	8	M8x1.25x60
	682724	682722	682725	682723	682725	BOLT	12	M8x1.25x30
14	682724	682722	682725	682723	682725	BOLT	12	M10x1.5x35
	682724	682722	682725	682723	682725	BOLT	12	M10x1.5x35
15	802435	802435	802410	802410	802410	BODY ASSEMBLY	1	
16	709163	709163	709162	709162	709162	CENTER ROD	1	
17	790911	790911	790911	790911	790911	NAME PLATE	1	
18	771054	771054	771054	771054	771054	CUSHION	2	
19	831280	831270	831281	831271	831322	MANIFOLD ASSEMBLY	2	
20	802362	802362	802362	802362	802362	VALVE BODY ASSEMBLY	1	
21	682265	682265	682265	682265	682265	BOLT	6	M8x1.25x75
22	683055	683055	684320	684320	684320	BALL VALVE	1	1/4"
	683055	683055	684320	684320	684320	BALL VALVE	1	3/8"
23	711722	711722	684320	684320	684320	BUSHING	1	3/8"x1/4"
24	771056	771056	771056	771056	771056	GASKET	1	
25	682515	682515	682515	682515	682515	SILENCER	1	3/4"
26	611148	611148	611148	611148	611148	BOLT	4	M8x1.25x22
27	682276	682276	682276	682276	682276	NUT WITH FLANGE	4	M8x1.25
28	709157	709157	709156	709156	709156	PUMP BASE	2	
29	770551	770551	770551	770551	770551	CUSHION	4	
30T	709314	709326	709327	709331	709331	CENTER DISK	2	
31T	643013	643013	643013	643013	643013	O RING	4	P14

NOTE 1)T : BAT/BST/BFT

2)Tab.1~Tab7 : SEE [9.3 Parts List "COMMON PARTS"] ON P.15.

3)NO.17(NAME PLATE) IS NOT INDICATED IN EXPLODED VIEW

9.3 Parts List

■ COMMON PARTS

Tab.1 O RING

TYPE	20BA/BS□	25BA/BS/BF□	MATERIAL
	P36	P46	
B□C	640036	640044	NBR
B□N	640036	640044	NBR
B□E	684118	683997	EPDM
B□V	642036	642044	FKM
B□T	643036	643044	PTFE
B□H	640036	640044	NBR
B□S	684118	683997	EPDM

Tab.2 O RING

TYPE	20BP□	25BP□	Q'TY	MATERIAL
	P34	P44		
BPC	640033	640042	8	NBR
BPN	640033	640042	8	NBR
BPE	684116	684119	8	EPDM
BPV	642033	642042	8	FKM
BPT	643033	643042	8	PTFE
BPH	640033	640042	8	NBR
BPS	684116	684119	8	EPDM

Tab.3 O RING

TYPE	25BV□	Q'TY	MATERIAL
	P44		
BVC			
BVN			
BVE	684119	8	EPDM
BVV	642042	8	FKM
BVT	643042	4	PTFE
BVH	643042	4	PTFE
BVS	643042	4	PTFE

Tab.4 BALL

TYPE	20BA/BS□	20BP□	25BA/BS/BF□	25BP□	25BV□	MATERIAL
B□C	770705	770705	770556	770556		CR
B□N	770720	770720	770581	770581		NBR
B□E	770723	770723	770590	770590	770590	EPDM
B□V	770726	770726	770599	770599	770599	FKM
B□T	770736	770736	770691	770691	770691	PTFE
B□H	770720	770720	770581	770581		NBR
					770691	PTFE
B□S	770723	770723	770590	770590		EPDM
					770691	PTFE

Tab.5 O RING (G35: EXCLUDED B□T)

TYPE	20BA/BS□	MATERIAL
B□C	640132	NBR
B□N	640132	NBR
B□E	684117	EPDM
B□V	642132	FKM
B□T	771131	PTFE
B□H	640132	NBR
B□S	684117	EPDM

Tab.6 O RING (G45: EXCLUDED B□T)

TYPE	25BA/BS/BF□	MATERIAL
B□C	640134	NBR
B□N	640134	NBR
B□E	683996	EPDM
B□V	642134	FKM
B□T	771130	PTFE
B□H	640134	NBR
B□S	683996	EPDM

Tab.7 DIAPHRAGM

TYPE	20BA/BS□	20BP□	25BA/BS/BF□	25BP□	25BV□	MATERIAL
B□C	771254	771254	771258	771258		CR
B□N	771255	771255	771259	771259		NBR
B□E	771256	771256	771260	771260	771260	EPDM
B□V	771257	771257	771261	771261	771261	FKM
B□T	771083	771083	771110	771110	771110	PTFE
B□H	771362	771362	771363	771363	771363	TPEE
B□S	771973	771973	771974	771974	771974	TPO

9.4 Parts List **■ BODY ASSEMBLY**

802435 BODY ASSEMBLY

[20BA□,BS□]

NO.	PART NO.	DESCRIPTION	Q'TY	NOTE
15-1	710275	AIR CHAMBER	2	
15-2	802360	PILOT VALVE ASSEMBLY	2	
15-3	771057	GASKET	2	
15-4	640009	O RING	2	P11 NBR
15-5	771945	VALVE SEAT	2	
15-6	708666	SPRING	2	
15-7	709812	BODY	1	
15-8	685276	O RING	2	
15-9	772703	THROAT BEARING	2	
15-10	685414	PACKING	2	
15-11	682486	FLAT HEAD BOLT	8	M8x1.25x20

802410 BODY ASSEMBLY

[25BA□,BS□,BF□]

NO.	PART NO.	DESCRIPTION	Q'TY	NOTE
15-1	710276	AIR CHAMBER	2	
15-2	802360	PILOT VALVE ASSEMBLY	2	
15-3	771057	GASKET	2	
15-4	640009	O RING	2	P11 NBR
15-5	771945	VALVE SEAT	2	
15-6	708666	SPRING	2	
15-7	709812	BODY	1	
15-8	685276	O RING	2	
15-9	772703	THROAT BEARING	2	
15-10	685414	PACKING	2	
15-11	682486	FLAT HEAD BOLT	8	M8x1.25x20

802808 BODY ASSEMBLY

[20BP□]

NO.	PART NO.	DESCRIPTION	Q'TY	NOTE
15-1	711504	AIR CHAMBER	2	
15-2	802360	PILOT VALVE ASSEMBLY	2	
15-3	771057	GASKET	2	
15-4	640009	O RING	2	P11 NBR
15-5	771945	VALVE SEAT	2	
15-6	708666	SPRING	2	
15-7	711503	BODY	1	
15-8	685276	O RING	2	
15-9	772703	THROAT BEARING	2	
15-10	685414	PACKING	2	
15-11	682486	FLAT HEAD BOLT	8	M8x1.25x20

802802 BODY ASSEMBLY

[25BP□,BV□]

NO.	PART NO.	DESCRIPTION	Q'TY	NOTE
15-1	711220	AIR CHAMBER	2	
15-2	802360	PILOT VALVE ASSEMBLY	2	
15-3	771057	GASKET	2	
15-4	640009	O RING	2	P11 NBR
15-5	771945	VALVE SEAT	2	
15-6	708666	SPRING	2	
15-7	711503	BODY	1	
15-8	685276	O RING	2	
15-9	772703	THROAT BEARING	2	
15-10	685414	PACKING	2	
15-11	682486	FLAT HEAD BOLT	8	M8x1.25x20

9.5 Parts List

■ BODY ASSEMBLY

802362 VALVE BODY ASSEMBLY

[20,25BA□,BS□,BF□]

NO.	PART NO.	DESCRIPTION	Q'TY	NOTE
20-1	709161	RESET BUTTON	1	
20-2	640005	O RING	1	P8 NBR
20-3	682704	BOLT	4	M6x1x32
20-4	771241	PACKING	1	
20-5	710270	PLAIN WASHER	1	
20-6	802400	C SPOOL VALVE ASSEMBLY	1	
20-7	710221	CAP	1	
20-8	771240	GASKET	2	
20-10	711639	VALVE BODY	1	
20-11	803931	SLEEVE ASSEMBLY	1	*1(771080)
20-13	771914	CUSHION	1	
20-15	709305	CAP	1	
20-16	682262	BOLT	4	M6x1x16

802809 VALVE BODY ASSEMBLY

[20,25BP□,BV□]

NO.	PART NO.	DESCRIPTION	Q'TY	NOTE
20-1	709161	RESET BUTTON	1	
20-2	640005	O RING	1	P8 NBR
20-3	682704	BOLT	4	M6x1x16
20-4	771241	PACKING	1	
20-5	710270	PLAIN WASHER	1	
20-6	802400	C SPOOL VALVE ASSEMBLY	1	
20-7	711219	CAP	1	
20-8	771240	GASKET	2	
20-10	711640	VALVE BODY	1	
20-11	803931	SLEEVE ASSEMBLY	1	*1(771080)
20-13	771914	CUSHION	1	
20-15	711212	CAP	1	
20-16	682262	BOLT	4	M6x1x16

NOTE)*1: PARTS NUMBER MENTIONED ON O RING FOR SLEEVE ASSEMBLY ONLY.