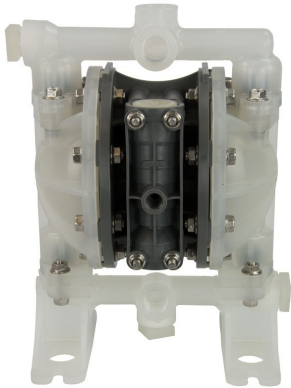


# EXPLODED VIEW & PARTS LISTING

Model: G15PT  
Part # 854916



## Air Operated Double Diaphragm Pump



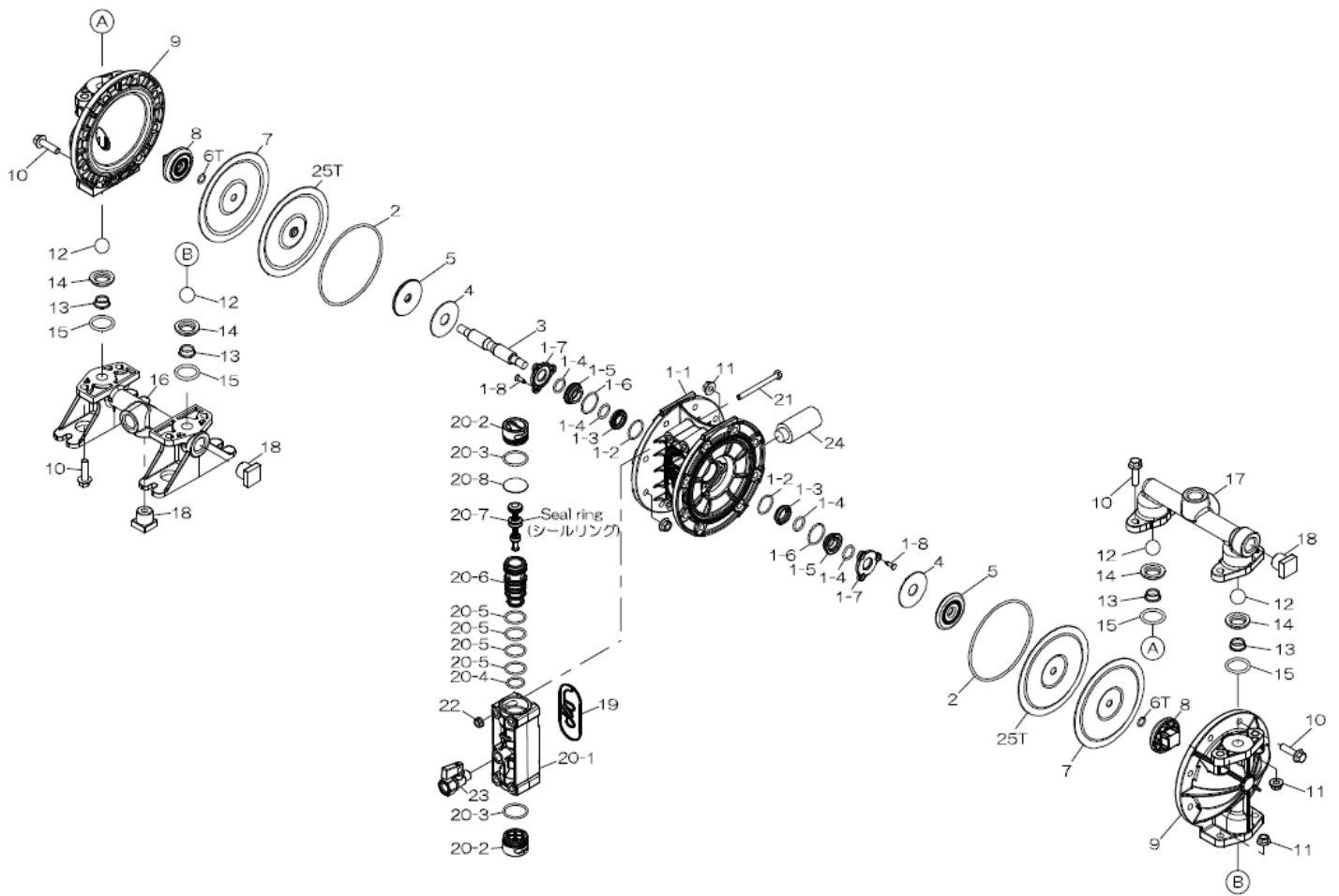
### To Purchase:

- ☎ 800-990-7867
- ✉ sales@yamadapump.com
- 📍 Find My Rep

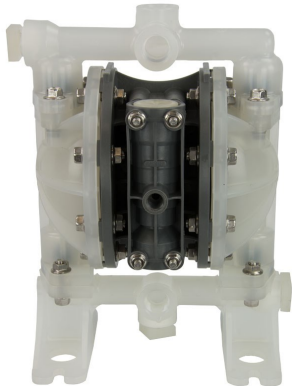
### More Information:

- ▶ YouTube: @yamadapump
- 🌐 yamadapump.com
- Data Sheets | CAD Drawings | Manuals Literature | BOM | Performance Curves*

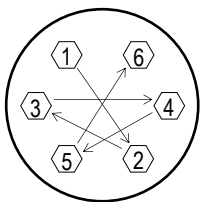
### Trial Program



Air Operated Double Diaphragm Pump



REF. NO.	PART NO.	DESCRIPTION	QTY.	REORDER
1	805217	BODY ASSY (G15P) NPT	1	
1-1	773410	BODY (G15P) NPT	1	
1-2	686893	O-RING	2	
1-3	773385	GUIDE BUSH A (G15)	2	
1-4	640015	O-RING 16MM X 2.5MM B	4	
1-5	780301	GUIDE BUSH B (G15)	2	
1-6	684900	O-RING 26.2MM X 1.9MM	2	
1-7	773384	GUIDE BUSH STOPPER G15	2	
1-8	686894	LONGER TAPPING SCREW	6	
2	640147	O-RING INK G110 3.1 X	2	
3	717100	CENTER ROD (G15) SUS	1	
4	773278	CUSHION (G15)	2	
5	716923	CENTER DISC (G15)	2	
6T	643007	O-RING 9.8MM X 1.9MM	2	
7	773276	DIAPHRAGM G15 (PTFE)	2	
8	773391	CENTER DISC (G15)	2	
9	780303	OUT CHAMBER (G15P)	2	
10	686892	BOLT W/ FLANGE	24	
11	686032	NUT W/ FLANGE M8X1.25	24	
12	773423	BALL (PTFE) G15	4	
13	773430	SEAT B (G15)	4	
14	773429	SEAT A (G15)	4	
15	643025	O-RING 25.7MM X 3.5MM	4	
16	780307	MANIFOLD B (G15P) NPT	1	
17	773395	MANIFOLD A (G15P) NPT	1	
18	773393	PLUG (G15) NPT	3	
19	773407	GASKET (G15)	1	
20	805210	VALVE BODY ASSY. (G15)	1	
20-1	780300	VALVE BODY (G15) NPT	1	
20-2	773383	CAP (G15)	2	
20-3	683112	O-RING	2	
20-4	685453	O-RING JASO-2019	1	
20-5	685276	O-RING 23.3MMX2.4MM	4	
20-6	780302	SLEEVE (G15)	1	
20-7	805208	SPOOL ASSY. (G15)	1	
20-8	773428	CUSHION (G15)	1	
21	621115	BOLT M6X1X70 (SUS304)	4	
22	684086	FLANGE NUT SERRATED M6X1.0	4	
24	686762	SILENCER NPT 3/8"	1	
25T	773447	DIAPHRAGM BACKUP G15TP	2	



**Tightening torque for center rod and out chambers.**

Center Rod 177 in-lbf {20 N-m}  
Out Chambers 89 in-lbf {10 N-m}

**Tightening torque for manifold retainer bolts.**

PT 89 in-lbf {10 N-m}

**General Tools:**

- Socket wrench - 10mm, 12mm
- Hexagonal box wrenches - 5mm
- Open-end wrench - 12mm, 22mm
- Phillips head screw driver
- Pliers

**Miscellaneous:**

- Assembly Oil—turbine oil none additional class 1 (equivalent to ISA VGA32 grade)
- Urea grease grade (NLGI) No. 2
- Thread locking agent (equivalent to LOCTITE® 222)

**Customer Notes**

Model #: \_\_\_\_\_  
Description: \_\_\_\_\_  
Serial #: \_\_\_\_\_  
Date Installed: \_\_\_\_\_  
Department Location: \_\_\_\_\_  
Tag/Project: \_\_\_\_\_