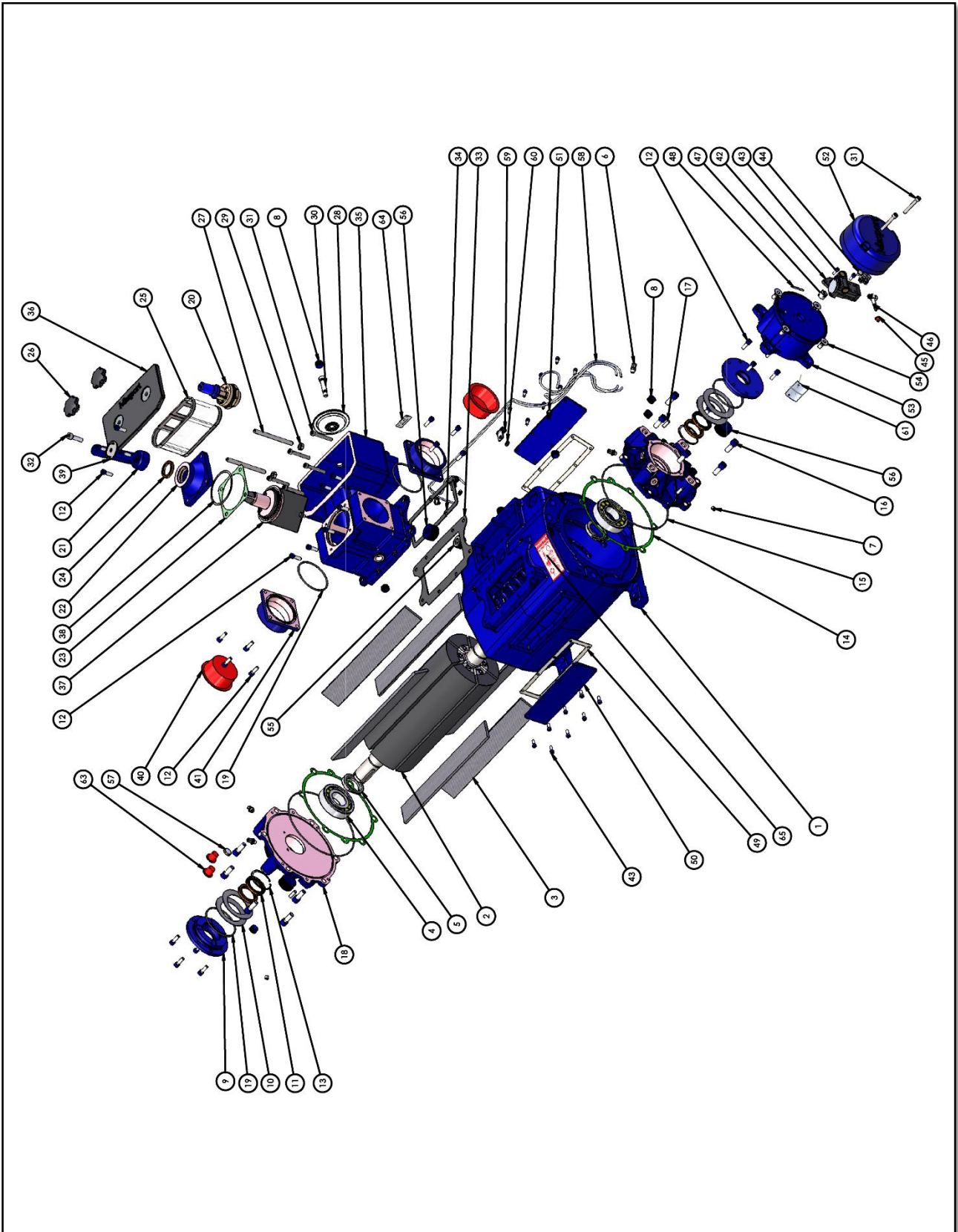


Hydra:



Item	Description	Part No.	Qty
1	Cylinder	969906	1
2	Rotor Assembly	969630	1
3	Vane Pack	969825	1
4	Bearing	569619	2
5	Spacer	569618	2
6	Fitting 1/8" to 4mm	569407	4
7	Plug 1/8"	569726	2
8	Plug 1/2"	569839	9
9	Bearing Retainer	969606	2
10	Bearing Spring	569613	4
11	Seal	569607	4
12	Screw M8 x 25	11063	28
13	Circlip	569682	2
14	Shim Gasket	569668	*
15	O-Ring	569683	2
16	Screw M12 x 30	569667	12
17	Dowel Pin	503259	4
18	End Cover	969605	2
19	O-Ring	568222	4
20	Vacuum Relief Valve	569023	1
21	Valve Handle	969827	1
22	Valve Cap	968035	1
23	Valve Gap Gasket	568044	1
24	Seal	501015	1
25	Inlet Filter	969821	1
26	Inlet Filter Cover Knob	969842	2
27	Stud M10	969822	2
28	Check Valve	969841	1
29	Nut M10	26066	2
30	Shoulder Screw M12 x 40	569851	1
31	Screw M8 x 60	569849	7
32	Screw M10 x 35	501966	1
33	Valve Exhaust Gasket	969832	1

Item	Description	Part No.	Qty
34	Valve Inlet Gasket	969833	1
35	Valve Body	969838	1
36	Inlet Filter Cover	969826	1
37	Valve Spool	969824	1
38	Wave Washer	569867	1
39	Indicator Washer	569724	1
40	Plug Plastic 3"	568030	2
41	Flange 3" NPT	969329	2
42	Oil Pump	569636	1
43	Screw M6 x 16	577711	18
44	Banjo Fitting M8 x 1 to 4mm	569409	4
45	Plug Plastic 1/16"	568008	1
46	Oil Pump Supply Fitting	569859	1
47	Oil Pump Coupler	969829	1
48	Roll Pin	569666	1
49	Side Plate Gasket	569909	2
50	Side Plate	569908	2
51	Cable Tie	503054S	2
52	Oil Pump Cap	969828	1
53	Bell Housing	969907	1
54	Screw Countersunk 1/2" x 1	501679	4
55	Plug 1"	501679	1
56	Plug 1 1/4"	569911	3
57	Frost Plug	569922	1
58	Oil Line	600293	*
59	P-Clip	568047	2
60	Spring Washer M8	501610	4
61	Pump Model Tag	569912	1
62	Drive Screw	500806	2
63	Plug Plastic 1/2"	501506	2
64	Flushing Port Sticker	569866	1
65	Warning Sticker	569903	1

\* Quantity may vary pump to pump