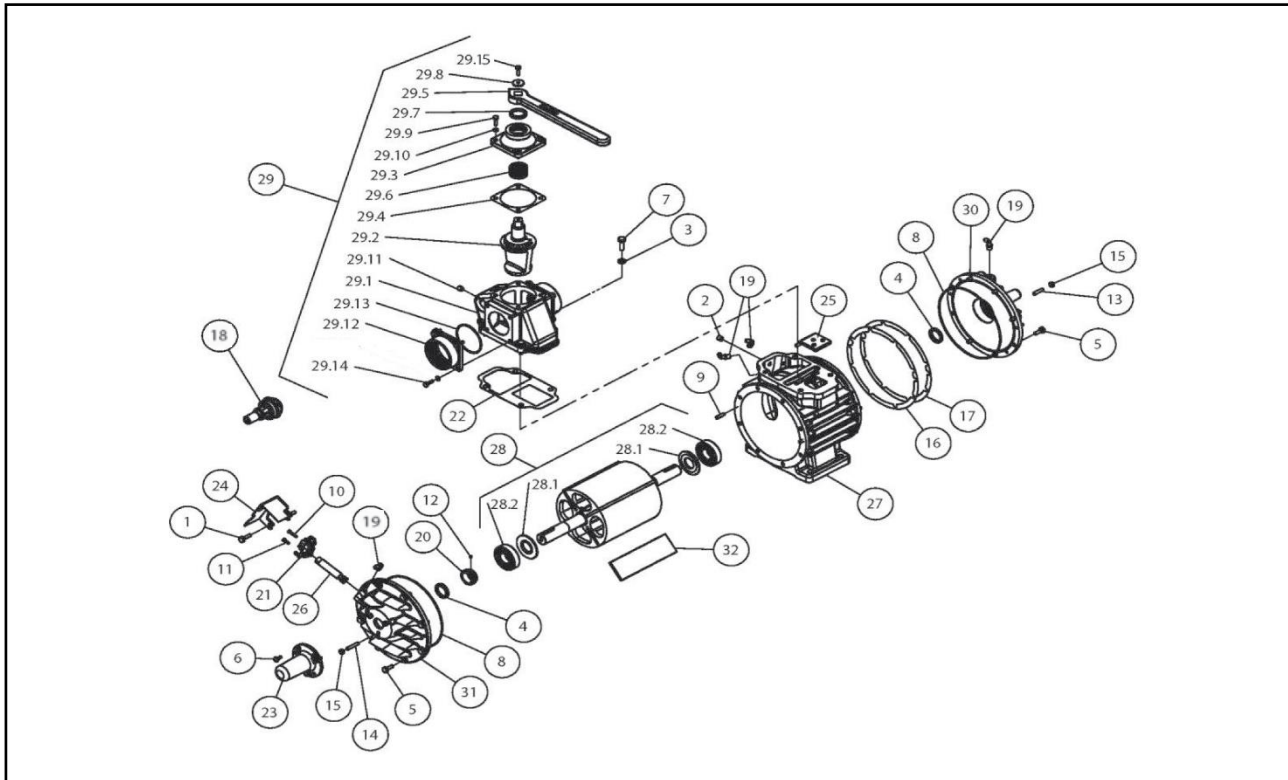


**HXL75V:**



Item	Description	Part No.	Qty
1	Screw M10 x 30	32307	2
2	Plug 1/4"	500100	1
3	Lockwasher M12	500203	4
4	Seal	501015	2
5	Screw M10 x 25	501569	14
6	Screw M8 x 16	501571	3
7	Screw M12 x 35	501666	4
8	O-Ring	501677	2
9	Dowel Pin	503258	4
10	Screw M5 x 25	504261	1
11	Screw M5 x 16	504262	1
12	Grub Screw M5 x 6	504264	1
13	Grub Screw M8 x 35	504276	3
14	Grub Screw M8 x 45	504277	3
15	Nut M8	504278	6
16	Shim Gasket .002"	542011	*
17	Shim Gasket .003"	542012	*
18	Vacuum Relief Valve	569023	1
19	Elbow Swivel 1/4" **	568086	4
20	Gear Worm	568158	1
21	Oil Pump	575437	1
22	Valve Gasket	568610	1
23	Shaft Guard	568622	1
24	Oil Pump Guard	568903	1
25	Flap Assembly	968026	1

Item	Description	Part No.	Qty
26	Drive Shaft Assembly	968045	1
27	Cylinder	968401	1
28	Rotor Assembly	968614	1
28.1	Spacer	968611	2
28.2	Bearing	503098	2
29	Valve Assembly	968753	1
29.1	Valve Body	969751	1
29.2	Valve Spool	968804	1
29.3	Valve Cap	968035	1
29.4	Valve Cap Gasket	568044	1
29.5	Valve Handle	968037	1
29.6	Valve Spring	568038	1
29.7	Seal	501015	1
29.8	Indicator Washer	569724	1
29.9	Screw M8 x 25	501598	4
29.10	Lockwasher M8	501610	12
29.11	Plug 1/4"	500100	1
29.12	Flange 3" NPT	969329	2
29.13	O-Ring	568222	2
29.14	Screw M8 x 25	501617	8
29.15	Screw M10 x 25	501569	1
30	End Cover	968843	1
31	End Cover Oil Pump	968854	1
32	Vane Pack	975539	1
33	Oil Line (Not Shown)	600293	1

\* Quantity may vary pump to pump

\*\* Pre-Serial Number PS0585: Item 19 was 3 x 568086 - Elbow Swivel 1/4" & 1 x 568085 - Elbow Swivel 1/8"