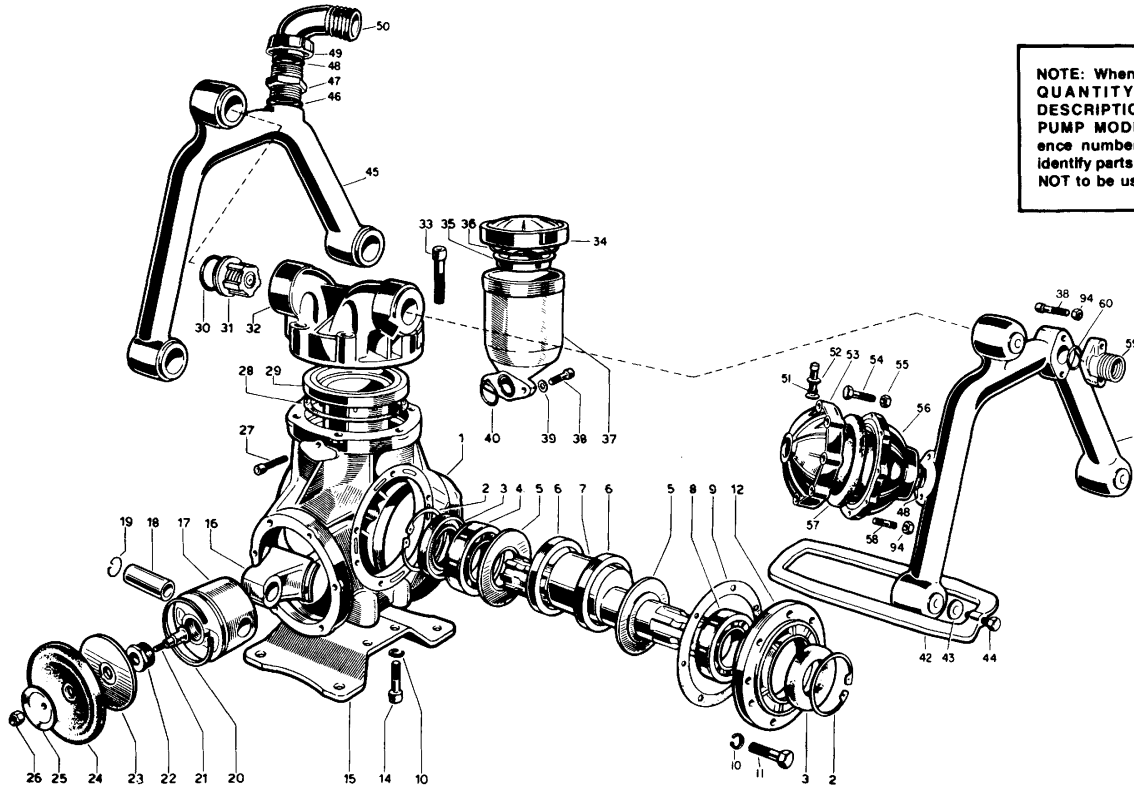


Hypro® Model 9910-D85



NOTE: When ordering parts, give **QUANTITY, PART NUMBER, DESCRIPTION, and COMPLETE PUMP MODEL NUMBER.** Reference numbers are used **ONLY** to identify parts in the drawing and are **NOT** to be used as order numbers.

REF. NO.	PART NUMBER	DESCRIPTION	QTY. REQ'D
1	9910-680010	Pump Body	1
2	9910-200390	Retainer Ring	2
3	9910-230380	Seal	2
4	9910-161060	Ball Bearing	1
5	9910-680160	Spacer	2
6	9910-680130	Retainer Ring	2
7	9910-680780	Crankshaft — Splined both ends	1
8	9910-230350	Ball Bearing	1
▲9	9910-680250	Gasket	1
10	9910-200231	Lock Washer	10
11	9910-180160	Bolt (10MAx30)	6
12	9910-680020	Bearing Support Housing	1
14	9910-160670	Bolt (10MAx25)	4
15	9910-680200	Pump Base	1
16	9910-680140	Connecting Rod	3
17	9910-650121	Piston	3
18	9910-650071	Connecting Rod Pin	3
19	9910-160691	Retainer Ring	6
20	9910-650190	Piston Ring	3
21	9910-650320	Retaining Bolt	3
22	9910-650610	Lock Nut for Retaining Bolt	3
23	9910-650090	Diaphragm Support Washer	3
■24	9910-680085	Diaphragm	3
25	9910-650390	Retaining Washer	3
26	9910-160311	Lock Nut	3
27	9910-480870	Bleeder Bolt	1
▲28	9910-320280	Spacer Washer	3
29	9910-680110	Piston Sleeve (w/Bleed Hole)	1
29A	9910-680111	Piston Sleeve (w/o Bleed Hole)	2
□▲30	9910-680070	O-Ring	6
□31	9910-659050	Check Valve Assembly	6

REF. NO.	PART NUMBER	DESCRIPTION	QTY. REQ'D
32	9910-680101	Head Assembly (Right Hand)	2
32	9910-680102	Head Assembly (Left Hand)	1
33	9910-680210	Head Bolts	18
34	9910-680050	Oil Cap	1
35	9910-680040	Rubber Sealing Cap	1
▲36	9910-580230	O-Ring	1
37	9910-680030	Oil Reservoir	1
38	9910-680350	Bolt (8MAx35)	4
39	9910-380241	Lock Washer	2
▲40	9910-390180	O-Ring	1
41	9910-680280	Discharge Manifold	1
42	9910-680271	Retaining Clamp	3
43	9910-680260	Washer	3
44	9910-250140	Bolt (12MAx35)	3
45	9910-680220	Suction Manifold	1
▲46	9910-250310	O-Ring	3
47	9910-580030	Threaded Adapter	1
▲48	9910-390290	O-Ring	2
49	9910-580060	Barb Nut	1
50	9910-580040	1/4" Hose Barb (Inlet)	1
▲51	9910-650542	O-Ring	1
52	9910-180020	Air Valve	1
53	9910-620230	Accumulator Head	1
54	9910-380250	Bolt (8MAx45)	8
55	9910-390270	Nut (8MAxH6.5)	8
56	9910-680180	Accumulator Body	1
■57	9910-550190	Accumulator Diaphragm	1
58	9910-390670	Accumulator Stud	2
59	9910-550393	NPT Fitting	1
▲60	9910-550350	O-Ring	1
94	9910-380240	Nut (8MAxH8)	6

KEY TO SYMBOLS REPAIR & MAINTENANCE KITS AVAILABLE

▲ O-Ring Parts Kit No. 9910 — KIT1737 consists of: Ref. 9 (1) Gasket, Ref. 30 (6 ea.) O-Rings, Ref. 36 (1) O-Ring, Ref. 40 (1) O-Rings, Ref. 46 (1) O-Ring, Ref. 48 (2) O-Rings, Ref. 51 (1) O-Rings, Ref. 60 (1) O-Ring, Ref. 28 (3) Washers.

■ Diaphragm Parts Kit No. 9910 — KIT1726 consists of: Ref. 24 (3 ea.) Diaphragm, Ref. 30 (6 ea.) O-Rings, Ref. 57 (1) Accumulator Diaphragm.
□ Valve Parts Kit No. 9910 — KIT1792 consists of: Ref. 30 (6 ea.) O-Rings, Ref. 31 (6 ea.) Valves.