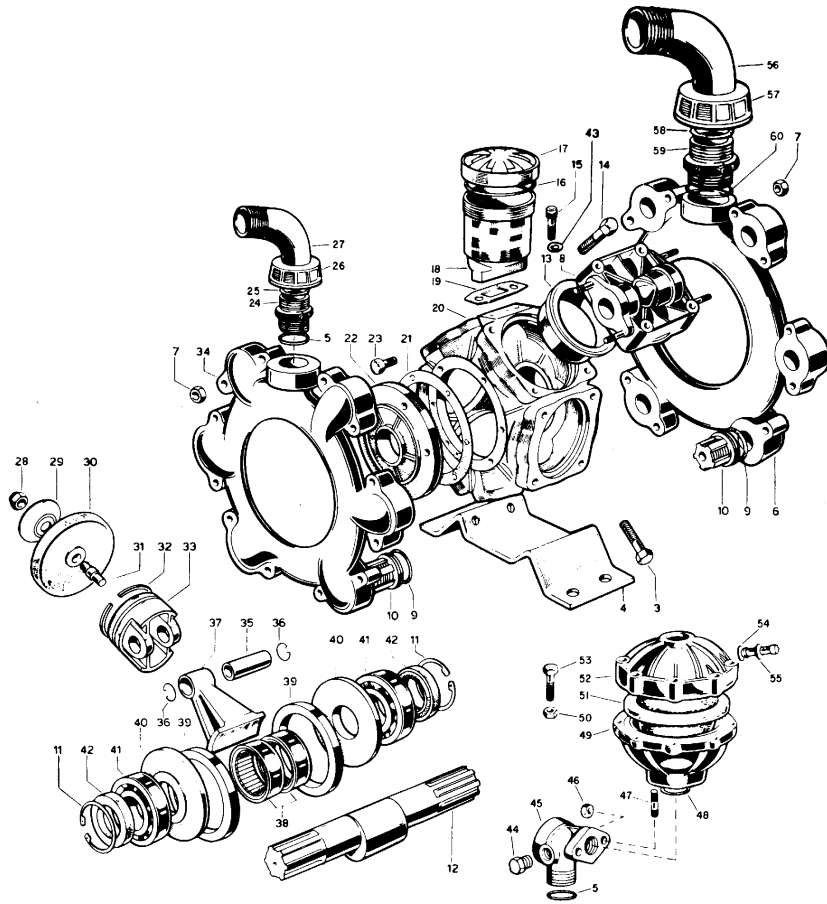


Hypro® Model 9910-D230



NOTE: When ordering parts, give QUANTITY, PART NUMBER, DESCRIPTION, and COMPLETE PUMP MODEL NUMBER. Reference numbers are used ONLY to identify parts in the drawing and are NOT to be used as order numbers.

REF. NO.	PART NUMBER	DESCRIPTION	QTY. REQ'D
3	9910-750070	Bolt (12MAx70)	4
4	9910-750200	Base	1
5	9910-620210	O-Ring	1
6	9910-750220	Suction Manifold	1
7	9910-380240	Nut	24
8	9910-750100	Head Assembly	6
▲	9910-680070	O-Ring	12
□	9910-759050	Check Valve Assembly	12
11	9910-200390	Retainer Ring	2
12	9910-750170	Crankshaft — Splined Both Ends	1
13	9910-750110	Piston Sleeve	6
14	9910-750060	Bolt (12MAx65)	20
15	9910-680350	Bolt (8MAx55)	2
▲	9910-580230	O-Ring	1
17	9910-750055	Cap for Oil Sight Glass	1
18	9910-750030	Oil Sight Glass	1
▲	9910-750040	Gasket	1
20	9910-750010	Pump Body	1
▲	9910-680250	Gasket	1
22	9910-680020	Bearing Support Housing	1
23	9910-160670	Bolt (10MAx25)	6
24	9910-540530	Threaded Adapter	1
▲	9910-250310	O-Ring	1
26	9910-540540	Barb Nut	1
27	9910-540550	1½" Hose Barb (Outlet)	1
28	9910-550131	Lock Nut for Retaining Bolt	6
29	9910-580090	Retaining Washer	6
■	9910-550085	Diaphragm	6
31	9910-550270	Retaining Bolt	6

REF. NO.	PART NUMBER	DESCRIPTION	QTY. REQ'D
32	9910-500260	Piston Ring	6
33	9910-750120	Piston	6
34	9910-750280	Discharge Manifold	1
35	9910-160700	Connecting Rod Pin	6
36	9910-160691	Retainer Ring	2
37	9910-750140	Connecting Rod	6
38	9910-750090	Roller Bearing	2
39	9910-750130	Spacer Ring	1
40	9910-540040	Spacer Washer	2
41	9910-230350	Ball Bearing	2
42	9910-230380	Seal	1
43	9910-380241	Washer	1
44	9910-330170	Plug	2
45	9910-760300	Adapter	1
46	9910-380230	Nut (8MAxH8)	8
47	9910-390670	Accumulator Stud	2
48	9910-390290	O-Ring	2
49	9910-680180	Accumulator Base	1
50	9910-390270	Nut (8MAxH6.5)	8
■	9910-550190	Accumulator Diaphragm	1
52	9910-620230	Accumulator Head	1
53	9910-380250	Bolt (8MAx45)	8
54	9910-650542	O-Ring	1
55	9910-180020	Air Valve	1
56	9910-760020	2" Hose Barb (Inlet)	1
57	9910-760040	Barb Nut	1
▲	9910-620210	O-Ring	1
59	9910-750330	Threaded Adapter	1
▲	9910-30281	O-Ring	1

REPAIR & MAINTENANCE KITS AVAILABLE

▲ O-Ring/Gasket Parts Kit No. 9910-KIT1736 consists of: Ref. 9 (12 ea.) O-Ring, Ref. 16 (1) O-Ring, Ref. 19 (1) O-Ring, Ref. 21 (1) O-Ring, Ref. 25 (1) O-Ring, Ref. 58 (1) O-Ring, Ref. 60 (1) O-Ring.

■ Diaphragm Parts Kit No. 9910-KIT1722 consists of: Ref. 9 (12 ea.) O-Rings, Ref. 30 (6 ea.) Diaphragms, Ref. 51 (1) Accumulator Diaphragm.
 □ Valve Parts Kit No. 9910 — KIT1907 consists of: Ref. 9 (12 ea.) O-Rings, Ref. 10 (12 ea.) Valves.