



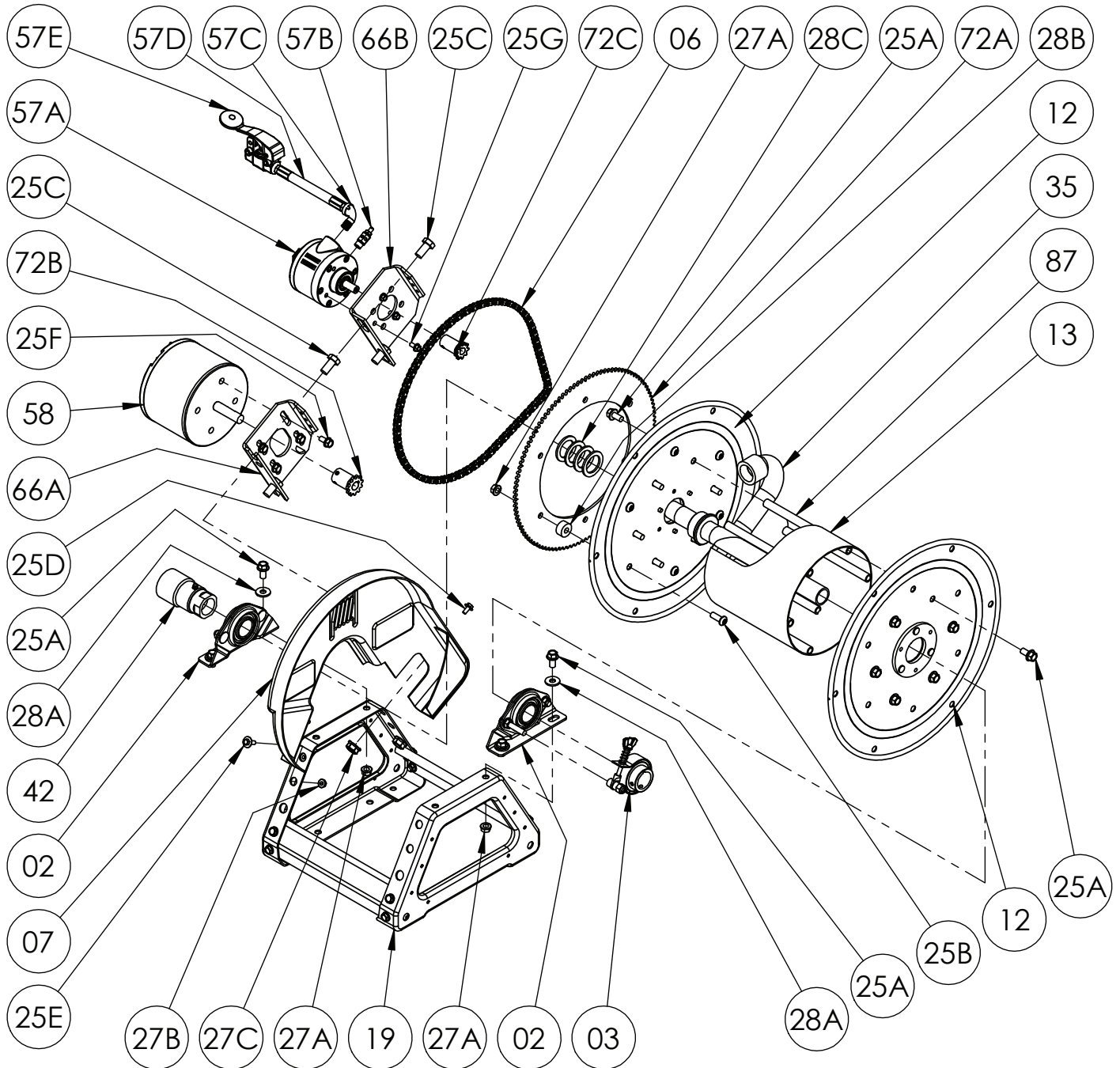
Hannay Reels®

The reel leader.

Hannay Reels, Inc.
553 State Route 143, Westerlo, NY 12193
www.hannay.com
Email: reels@hannay.com

Phone 1-518-797-3791
Toll Free 1-877-GO-REELS (467-3357)
Fax 1-800-REELING (733-5464)
Int'l Fax 1-518-797-3259

ISO 68 PARTS LIST SERIES 4000 POWER REWIND



Hannay ISO Parts Lists are available
at www.hannay.com

**PARTS LIST
ISO 68
SERIES 4000 POWER REWIND**

**When Ordering Parts
BE SURE TO SPECIFY COMPLETE MODEL NUMBER and SERIAL NUMBER OF REEL
USE PART NUMBER!**

<u>Item No.</u>	<u>Description</u>	<u>Part No.</u>	<u>Quantity</u>
02	1" Self Aligning Bearing Complete (See ISO-210 for Parts).....	9902.1400	2
03	Strap Brake Assembly Complete (See ISO-212 for Parts).....	9947.0090	1
06	#35 Chain-116 Links (43-1/2") w/ Connecting Link	9912.0028	1
07	Molded Chain Guard for Motor on Left, P07A-00740.....	9957.0030	1
07	Molded Chain Guard for Motor on Right, P07A-00750 (Not Shown).....	9957.0031	1
12	Disc, 16-1/2" Dia., 14 GA. w/ disc washer.....	9903.0721	2
13	Drum, 8" Dia. (Specify Model).....	9905.3121	1
19	Trapezoid Frame Assembly, (Specify Model) (Steel E-Coated)	9908.1000	1
25A	3/8"-18 x 3/4" Spin Lock Bolt.....	9904.2201	16
25B	3/8"-16 x 1" Button Head Cap Screw (For Sprocket)	9904.9202	6
25C	1/2"-13 x 1" Hex Head Bolt (For Motorplate).....	9904.1402	2
25D	1/4"-20 x 1/2" Hex Washer Head Tap Tight Screw (For Chainguard).....	9904.1070	2
25E	1/4"-20 x 3/4" Hex Washer Head Black Zinc Screw (For Chainguard).....	9904.1071	2
27A	3/8"-18 Spin Lock Nut.....	9904.6200	10
27B	1/4"-20 Small Flange Spin Lock Nut (For Chainguard)	9904.6000	2
27C	1/2"-13 Spin Lock Nut (For Motorplate).....	9904.5400	2
28A	3/8" Flat Washer	9954.0007	4
28B	Disc Sprocket Spacer (1" O.D. x 0.381" I.D. X 1/2" Thick).....	9954.0015	6
28C	1" Hub Spacer Washer, 1/8" Thick	9954.0021	As Req'd
35	1" Hub Assembly (Specify Model and Riser Fitting).....	9901.1600	1
42	1" 90° FxF Full Flow Super Swivel Joint with GLT Viton Packing.....	9929.8552	1
72A	112T35 x 13-3/8" Dia. Disc Sprocket.....	9910.1321	1
87	Anodized Threaded Spacer Pipe.....	Spec Model	6
Electric Rewind Only			
25F	5/16"-18 x 3/4" Spin Lock Bolt.....	9904.2101	4
58	AN-227 12V DC Face Mount 1/3 HP 650 RPM Motor.....	9915.0042	1
58	AN-239 12V DC Face Mount 1/5 HP 420 RPM Motor (Optional).....	9915.0040	1
66A	Motor Mounting Plate	9923.0006	1
72B	11T35 x 1-3/4" Motor Sprocket.....	9910.1119	1
Air Rewind Only			
25G	1/4"-20 x 1/2" Spin Lock Bolt.....	9904.1058	3
57A	#4 AM Gast Air Motor (Includes 57B)	9918.1122	1
57B	1/4" Speed Control Muffler	9919.0006	1
57C	1/4" 90 Degree MxF Street Elbow	9950.0013	1
57D	18" 1/4" x 1/4" NPT Air Hose	9919.0007	1
57E	#3420 Schrader Valve	9919.0004	1
66B	Air Motor Mounting Plate.....	9923.0013	1
72C	9T35 x 1-3/4" Motor Sprocket.....	9910.1015	1