

Good through 3/3/25



EARLY ORDER PROGRAM

Special Prices & Quantity Discounts on Select Items!



Scan our QR code to request a free catalog!

Additional discounts on \$5000 orders
Call for details



- Technical Support
- 24/7 Online Ordering

- Huge Inventories
- Same Day Shipping

FREE FREIGHT 
* On Orders \$2500+

DULTMEIER.COM OMAHA, NE (800) 228-9666 DAVENPORT, IA (800) 553-6975

* Continental U.S. Only. Tanks, Pipe & Sprayers Excluded. Please Allow 3 Weeks for Large Early Orders to Ship.

- Prices Subject to Change Without Notice -



SPECIAL PRICES

TRANSFER & HYDRAULIC DRIVE PUMPS

MP, SCOT, HYPRO & BANJO Transfer Pumps

- Cast Iron • Self-Priming



MP FLOMAX 8
(DU MP25GH)



Scot

Part No.	Description	SPECIAL
TK 200PIH5	2" CI Pump, 5.5 HP Honda, Banjo Pump.....	\$ 937.00
DU MP25GH	2" 5 HP Honda, Flomax 8 Pump	967.00
DU FKG74AV55H	2" 5 HP Honda, Scot Pump	1025.00
TK 200PI6PRO	2" 6.5 HP Briggs, Banjo Pump	698.00
DU MP25GH-SS	2" 4.8 HP Honda, Flomax 8 Pump, S.S.....	3440.00
DU MP313GH	3" 13 HP Honda, Flomax 15 Pump.....	1870.00
**DU MP313GHE	3" 13 HP Honda Elect., Flomax 15 Pump..	2087.00
**DU MP313CRXE	3" 13 HP CRX Flowmax 15 Pump.....	1753.00
HY 1533C-13ESP	3" CI Hypro Pump, 13 HP PowerPro Engine	1632.00
DU MP313CRX	3" 12 HYP CRX Flowmax 15 Pump Recoil.....	1492.00

2" & 3" Self-Priming Poly Transfer Pumps

HYPRO, PACER & BANJO ENGINE DRIVEN PUMPS:

- Portable • LightWeight • Self-Priming • Corrosion-Resistant



HYPRO
HY 1542P-5SP



BANJO
TK 200PH-5

PACER



HYPRO® Motor Driven Units Also Available

Part No.	PUMP STYLE	Ports	Max. GPM	SPECIAL
HY 1542P-65SP	6.5 HP Hypro PowerPro	2" FPT	200	\$ 444.00
TK 200PH-5	5.5 HP Banjo/Honda	2" FPT	215	805.00
TK 300PH-6	6.5 HP Banjo/Honda	3" FPT	290	940.00
PR SE2UL-E5.5	5.5 HP Pacer/Briggs	2" FPT	150	384.00
* HY 1543P-130ESP	13 HP Hypro PowerPro	3" FPT	440	1343.00
TK M220PH6	2" 6.5 HP Poly Manifold Pump, Honda			814.00
TK M300PH13W**	13 HP Banjo/Honda	3" FPT	350	2051.00

* Electric Start. ** 12V Start, Double Wet Seal.

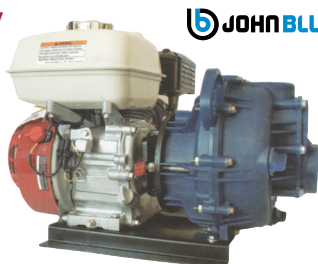
Double Wet Seal Poly Pump Pak

2" Features:

- 200 GPM Maximum Flow
- 5.5 HP Honda GX200

3" Features:

- 375 GPM Maximum Flow
- 13 HP Honda GX200



DU BU25GHSP-P

Part No.	Description	SPECIAL
DU BU25GHSP-P	2" Self Priming with 5.5 HP Honda GX200 Eng...	\$ 906.00
BU PSP3340-G13H	3" Self Priming with 13HP Honda 12 Start Eng...	2104.00

Self-Priming Poly 350 Centrifugal Pumps Gas Engine Models

- 13 HP Honda Engine, 12V Start (GX390)
- Tandem Wet Seal (EPDM)
- 3" Flanged Ports



M350PH13W

Part No.	Description	Flow @ 20 PSI	Max Flow	SPECIAL
TK M350PH13W	3" Poly Pump w/ 13 HP, Honda Engine, 12V Start	405 GPM	515	\$ 1726.00

* Max Flow with 4" Suction & Fittings

HYD and Electric Options Also Available



John Blue NGP Ground Drive & Hydraulic Piston Pumps

Features:

- Rate Proportional to Speed.
- Unmatched Accuracy for Starter Fertilizer Placement, Regardless of Speed Changes!
- Use with Flow Dividers.
- Adjustable Rate Pumps Also Available.



Hydraulic Motor Shown is Sold Separately

Part No.	Max. GPM @ 450 RPM	Max. PSI	Port Size	SPECIAL
BU NGP4055F	10.2	120	1" FPT / 2" SP Flange	\$ 1714.00
BU NGP4055HYF*	10.2	120	1" FPT / 2" SP Flanged	1047.00
BU NGP6055	21.0	120	1-1/2" FPT	1441.00
BU NGP6055HYF*	21.0	120	1-1/2" FPT(2) 220 Flg. Flanged	1057.00
BU NGP7055	34.2	120	1-1/2" FPT	1794.00
BU NGP7055HY*	34.2	120	1-1/2" FPT	1018.00
BU NGP7055HYF*	34.2	120	1" FPT / 2" SP Flange	1134.00
BU NGP8055	42.0	120	1" FPT	2625.00
BU NGP9055	68.4	120	1-1/2" FPT	2696.00
BU NGP9055HY*	68.4	120	1-1/2" FPT Less Motor	1891.00
BU 116205-91	Hydraulic Motor & PWM Valve for "HY" Pumps			1066.00

* Less hydraulic motor

Double Wet Seal Cast Iron Pump Pak

Cast Iron Pump Pak

2" Features:

- 200 GPM Maximum Flow
- 5.5 HP Honda GX200

3" Features:

- 375 GPM Maximum Flow
- 13 HP Honda GX200



313GHE-HF
Cast Iron

Part No.	Description	SPECIAL
DU BU25GH	2" Self Priming with 5.5 HP Honda.....	\$ 1072.00
DU BU313GHE-HF	3" Self Priming with 13 HP Honda, Elec. Start Eng.....	2457.00
DU BU313CRXE-HF	3" Self Priming with 13 HP CRX, Elec. Start Eng.	2068.00



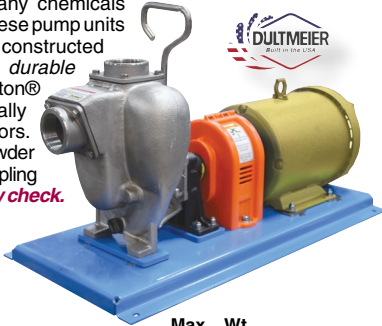


SPECIAL PRICES

SPRAYER - PLANT - INJECTION PUMPS

2" 316 Stainless Self-Priming Pump Units

An excellent choice for pumping many chemicals compatible with 316 stainless steel. These pump units consist of 2" x 2" self-priming pumps constructed of 316 cast stainless steel (*more durable than stamped stainless pumps*). Viton® seals. Pumps are long-coupled to Totally Enclosed, Fan Cooled (TEFC) motors. Heavy duty steel base plates with powder coat paint finish and OSHA approved coupling guards. **Call for chemical compatibility check.**



316 SS Pump Units

Part No.	HP	Phase	Elastomer	Max. S.G.	Wt. Lbs.	SPECIAL
DU TK3530-SSV	5	3	Viton® Single Seal	1.4	145	\$ 3735.00
DU TK3510-SSV	5	1	Viton® Single Seal	1.4	145	4040.00
DU TK3530-SSW	5	3	* Viton® Double Seal	1.4	145	4245.00
DU TK3510-SSW	5	1	* Viton® Double Seal	1.4	145	4487.00

* Viton® Double Seal with Liquid Reservoir.

ACE Hydraulic Drive Pumps

Cast Iron

— Other Models Available —



Part No.	SPECIAL
AC FMC-HYD-204.....	\$ 902.00
AC FMC150HYD206.....	926.00
AC FMC200HYD304.....	1089.00
AC FMCWS125-204*.....	1263.00
AC FMCWS125-206PVM*.....	2079.00
AC FMCWS155F-206PVM*.....	2106.00

* Feature Silicon Carbide or Oasis Wet Seals

Chemical Injection Metering Pumps

- Wide Flowrate Range
- Precise Application of Chemical & Fertilizer for

Replacement Parts In Stock!



JOHNBLUE

SIMPLEX SINGLE PISTON UNITS

Part No.	GPH	Drive Design	SPECIAL
BU 20620	5-30	1/2 hp, 3 phase	\$ 1493.00
BU 21630	10-30	1/2 hp, 3 phase	1571.00

HYPRO® Pumps



Hydraulic Drive Spray Pumps – Viton® or Silicon Carbide Seals

Part No.	Material	Size/Style	SPECIAL
HY 9303C-HM1	Cast Iron	1-1/2" x 1-1/4" FPT	\$1037.00
HY 9303C-HM4	Cast Iron	1-1/2" x 1-1/4" FPT	1037.00
HY 9306CHM1C	Cast Iron	2" x 1-1/2" FPT	1240.00
HY 9306CHM5C	Cast Iron	2" x 1-1/2" FPT	1203.00
* HY 9306CHM3CB	Cast Iron	2" x 1-1/2" FPT	1411.00
* HY 9306CHM5CB	Cast Iron	2" x 1-1/2" FPT	1309.00
* HY 9306SHM1C	Stainless	2" x 1-1/2" FPT	2211.00
* HY 9306SHM3C	Stainless	2" x 1-1/2" FPT	2279.00
* HY 9306SHM5C	Stainless	2" x 1-1/2" FPT	2211.00
* HY 9306S-HM1C-3U	Stainless	300 x 220 Flanged	2361.00
* HY 9306S-HM5C-3U	Stainless	300 x 220 Flanged	2360.00

* Severe Duty Sil-Carbide Seal

- HY 9307 Series 3X2 Available -

Fertilizer Plant Pumps

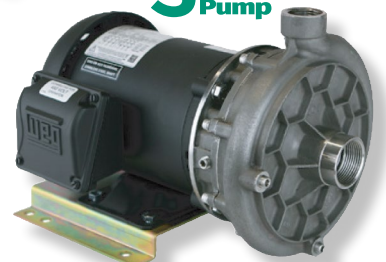


FP56F Series



1424 Series Vertiflo Double Seal Pump Unit

VERTIFLO PUMP COMPANY



Scot Stainless Close Coupled



Electric Motor Drive Units



MP3530 FLOMAX 8

SSD602-53 SCOT

Electric Motor Drive Units

Part No.	Description	SPECIAL
DU MP3530	MP Flomax 8 Pump, 2"x2", 110GPM @ 20 PSI, 5 HP, 3 Phase Motor, Self Priming.....	\$ 1997.00
DU SSD602-53	Scot 8 Pump, 2"x2", 150GPM @ 20 PSI, 5 HP, 3 Phase Motor, Straight.....	4723.00
DU MP1033	MP Flomax 15 Pump, 3"x3", 10HP, 3 Phase Motor	3266.00



Call for Pricing or Pump Sizing



DULTMEIER SALES

OMAHA, NE

(800) 228-9666

• DAVENPORT, IA

(800) 553-6975



SPECIAL PRICES PLANT AUTOMATION

LIQUID FERTILIZER CONTROLS & AUTOMATION SYSTEMS



Easy Automation, Inc. is an international supplier of automation technology to the agronomy, feed manufacturing, and grain handling industries. Founded in 1986, we have spent the last 35+ years creating innovative and practical solutions for agriculture industries.



Scan our QR code to learn more!

24/7 UNATTENDED LOADOUT

24/7 unattended loadout allows trucks to pull up to a check-in kiosk, route to loadout, and start the blending process from an unattended touchscreen(s). After the load is complete, the truck can pull over a truck scale to capture a loaded weight, or receive load amount from a legal for trade mass meter, sign, and get a printed ticket. All while staying in the truck. Data is recorded and can be pulled for records.



CORE METER CONTROL PANEL

Meter control panel with core capabilities to run your fertilizer facility today, and the potential to build onto in the future. Pre-wired for easy installation, the core meter control panel is the perfect fit for a facility looking to automate their fertilizer meter system with the vision to potentially grow in the future.



SHUTTLE FILL SYSTEM

The shuttle fill system is controlled by a custom HMI screen specific to your facility. The shuttle fill system is automated to utilize either a legal for trade meter or scale system. This system allows you to repackage bulk products into shuttles, kegs, or jugs for customer pick up or inventory stocking with ease and records.



CHEMICAL WEIGH TANK

Chemical systems can be done with either meters or 250 gallon weigh tank designs. Whether you are looking for speed with a direct inject meter system or accuracy and flexibility with a weigh tank system, our customizable software and components can fit any chemical handling facility. The system can be run independently or paired with a fertilizer system to give you total control of your retail operations.





SPECIAL PRICES

MINI-BULK PUMPS & FLOW METERS

CT6 AgChemical Pump Kits



These high flow diaphragm pumps are designed to transfer agchemicals at up to **13-14 GPM**. Fitted with EPDM or Viton seals for resistance to most agchemicals and other selected products.



CT6 Kits Include: CT6 pump with bracket to secure to cage tanks, suction hose with 2" female camlock discharge hose, SEM10 meter and nozzle valve.

Part No.	Description	SPECIAL
SI CT6-M-E	CT6 Pump/Meter Kit, 12 Volt	\$ 755.00
SI CT6-M-V	CT6 Pump/Meter Kit for Cage Tank, 12 Volt, Viton®	795.00
SI CT6HF-E	CT6 High Flow Pump/Meter Kit, 12V, EPDM.	820.00
SI CT6HF-V	CT6HF High Flow Pump/Meter Kit, 12 Volt, Viton®	840.00
SI CT6-M-115-E	CT6 Pump/Meter Kit, 115 Volt	822.00
SI CT6-PO-E	CT6 PUMP ONLY, 12 Volt	426.00
SI CT6-PO115-E	CT6 PUMP ONLY, 115 Volt	481.00
SI CT6-LM-E	CT6 Cage Tank Pump Kit, LESS Meter 12 Volt..	640.00
SI CT6-M-115-V	CT6 Pump/Meter Kit for Cage Tank, 115 Volt, Viton®	872.00
SI CT6HF-LM-V	CT6HF Cage Tank Pump Kit, LESS Meter 12V, Viton®	698.00



CT6 AgChemical Caddy Kits

Caddy Versions include the same features as at right and are enclosed in a convenient carrying frame, with SEM-10 meter, 1" x 12' discharge hose and ball valve nozzle.



CT6-CAD-115

SI	Description	SPECIAL
SI CT6-CAD-E	CT6 Caddy System, 12 Volt	\$ 853.00
SI CT6-CAD-V	CT6 Caddy System, 12 Volt, Viton®	872.00
SI CT6HF-CAD-E	CT6HF "High Flow" Caddy System, 12 Volt..	911.00
SI CT6-CAD-115-E	CT6 Caddy System, 115 Volt	946.00

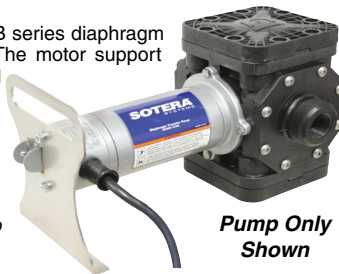
SOTERA Tote & Go Pump Kits

SYSTEMS

Use For:

- Agchemicals • Fertilizers • Seed Treatment Liquids
- Propionic Acid (Hay Treatment) • Anti-Freeze • Motor Oil
- Waste Oil (with Inlet Screen) • Hydraulic Fluid • Transmission Fluid
- Soaps & Cleaning Fluids • Deicing Liquids

These versions of the Sotera 400B series diaphragm pump offer maximum flexibility. The motor support bracket allows the unit to set level on the ground or atop a mini-bulk tank. 2" Camlock inlet and 1" FPT outlet. Available in 12V or 115V pumps & pump kits (kits include 1 x 36" suction hose and 1" x 12' EPDM discharge hose with nozzle valve and fittings; Suction tube also included).



Pump Only Shown

Part No.	Description	Amp Draw	SPECIAL
FR 415X731	12 Volt pump only	12.0	\$ 644.00
FR 415X731PG	12 Volt pump kit	12.0	798.00
FR 460X731	115 Volt pump only	12.0	644.00
FR 460X731PG	115 Volt pump kit	12.0	830.00
FR F1855	1" Telescoping Suction Tube		31.00

Electronic Flow Meters

Sotera • Scienco • GPI • Fill-Rite



Model SEM10



Model 825



SHURFLO



Model FM1100



Model OM025P001-826R7G



Model FM300H



Model TT10PN



Model 3000E

FILL-RITE

Part No.	Size	Flowrate	Max. Pressure	SPECIAL
**FR 825	1" FPT	2-20 GPM	120 PSI	\$ 275.00
FR TT10PN	1" FPT	2-35 GPM	50 PSI	233.00
*FR 850	1" FPT	2-20 GPM	120 PSI	355.00
SI SEM10	1" MPT	2-30 GPM	60 PSI	245.00
†SI SEM10FTE	1" MPT	3-30 GPM	100 PSI	245.00
**SI SEM10FTV	1" MPT	3-30 GPM	100 PSI	248.00
GI FM300H	1"	2-20 GPM	50 PSI	448.00
SU FM1100	1" FPT	2-20 GPM	100 PSI	357.00
†SU FM1100I	1" FPT	2-20 GPM	100 PSI	331.00
DP 3000E	1"	2-22 GPM	40 PSI	319.00
**DP 3000V	1"	2-22 GPM	40 PSI	337.00
GI OM025P001-826R7G	1" FPT	3-40 GPM	175 PSI	932.00

* Includes Air Eliminator. † Hose End Style. ** V= Viton® Seals

Dura Meter Viton® & EPDM



Part No.	Description	SPECIAL
DP HFM2V	2" Dura-Meter, Viton®	\$ 966.00
DP HFM3V	3" Dura-Meter, Viton®	1201.00
DP HFM2E	2" Dura-Meter, EPDM	914.00
DP HFM3E	3" Dura-Meter, EPDM	1150.00



Part No. GD HS9379

SPECIAL \$ 47.50

Hose Assemblies EPDM for Herbicides

These **EPDM Hose Assemblies** are first quality replacement for HERBICIDE HOSES. For Sotera, Scienco & GPI Chemical Pump Units. **No. HS9379** is 1" x 12' with 1" MNPT crimped ends.



DULTMEIER SALES

OMAHA, NE

(800) 228-9666

•

DAVENPORT, IA

(800) 553-6975

Page 5



SPECIAL PRICES

MINI-BULK PUMPS & METER SYSTEMS

Dura-Pump™ Easy Caddy Systems



FEATURES: Can be mounted in (6) different configurations on a variety of tank/tote and drum types • 1" x 5' Suction hose & 1" x 12' Discharge hose with ball valve nozzle • Polypropylene fittings & 2" camlock for cage tank bottom port suction • Optional meter is DP 3000E or DP 3000V • Features 2 Year Warranty.



Part No.	Description	SPECIAL
DP E6018E-12	12 Volt Pump Only, EPDM.....	\$ 766.00
DP E6018E-110	115 Volt Pump Only, EPDM.....	834.00
DP E6018V-12	12 Volt Pump Only, Viton®	805.00
DP E6018V-110	115 Volt Pump Only, Viton®	888.00
DP T4001	1" Telescoping Suction Tube	33.25

Ask about upgrading DP3000 to Auto Batch



Dura-Pump™ -Repair Kits Available-

Part No.	Description	SPECIAL
DP 6018E-12	12 Volt Pump Only, EPDM.....	\$ 650.00
DP 6018E-110	115 Volt Pump Only, EPDM.....	716.00
DP 6018V-12	12 Volt Pump Only, Viton®	688.00
DP 6018V-110	115 Volt Pump Only, Viton®	785.00
DP T4001	1" Telescoping Suction Tube.....	33.25



DURA-ABV™ & BANJO EVX® Auto Batch Meter with Valve



How It Works

- 1 Select the volume desired
- 2 Press START
- 3 Banjo EVX® Valve will open, fluid is measured and valve automatically closes upon completion

- Pump Not Included -



- Flow Rate: 2 to 22 GPM & Maximum Pressure: 40 PSI
- Meter Accuracy is ± 0.5%
- Backlit LCD Display
- Powered By (4) "AAA" Batteries
- Wetted Materials: Polypropylene, 304 Stainless Steel, Ryton, EPDM, Viton® or Silicone Seals
- Moisture Sealed

- Amount Metered & Batch Count
- Units Measured is Gallons, Liters or Ounces
- Calibration: Quick List or Manual
- Dimensions: 5-1/4" W x 5-1/4" H x 4-1/4" D
- Operating Temperature is -10° F. to +130° F.
- Weight is 1.5 lbs.

Part No.	Description	SPECIAL
DP DURA-ABV-B	Dura ABV Auto BatchPreset Meter for 12V Control Valve....	\$ 842.00
TK MEVX100B	1" Flanged 12V Banjo Valve with 18" Cable & 3 Pin Weather Pack Connector.....	383.00
DU ABV-MEVX-1	1" Plumbing Kit, Flanged	7.60



DURA-ABS™ Auto-Batch System - Direct Injection

The *Dura Auto-Batch System DI (Automated Direct Injection)* works by direct injecting herbicides automatically into the sprayer carrier while filling the sprayer tank.

Automated DI (Direct Injection)

- Filling your sprayer has never been easier or faster
- Check valves eliminate potential of herbicide backflow
- Accurately dispenses repeatable batches within 0.5% in ounces, gallons or liters
- Eliminates cross contamination
- Eliminates herbicide exposure and operator error
- Eliminates rinsing and wasting of chemical
- 3-Way valve provides for easy calibration and provides ability to plumb for recirculation of herbicide tank
- No data recording; not legal for direct resale



Direct inject herbicides into the carrier stream.

How It Works

- 1 Select the volume desired
- 2 Press START
- 3 The ABS Pumps will begin to dispense fluid then automatically shut off when complete

Example fill

37.5 gallons of SureStart®
37.5 gallons of Atrazine
25.0 gallons of Glyphosate
12.5 gallons of 2,4-D

All direct injected at once in less than 5 1/2 minutes with 2" plumbing

Part No. Inductor, Inductor Tank & Large Pump Sold Separately

DP AB-DI2E-12	AutoBatch Direct Inject System, 2IN, 4 Prods, 12V, EPDM
DP AB-DI2V-12	AutoBatch Direct Inject System, 2IN, 4 Prods, 12V, Viton®
DP AB-DI2E-110	AutoBatch Direct Inject System, 2IN, 4 Prods, 110V, EPDM
DP AB-DI2V-110	AutoBatch Direct Inject System, 2IN, 4 Prods, 110V, Viton®
DP AB-DI3E-12	AutoBatch Direct Inject System, 3IN, 4 Prods, 12V, EPDM
DP AB-DI3V-12	AutoBatch Direct Inject System, 3IN, 4 Prods, 12V, Viton®
DP AB-DI3E-110	AutoBatch Direct Inject System, 3IN, 4 Prods, 110V, EPDM
DP AB-DI3V-110	AutoBatch Direct Inject System, 2IN, 4 Prods, 110V, Viton®

Call for Pricing!

Dura™ Auto Batch Systems

Finally An Economical Transfer System Offering An Automated Dispensing Option!

- **HOWITWORKS:** Simply select the volume desired, Press Start, and the pump will begin to dispense fluid and automatically shuts off when target is reached.



Part No.	Description	SPECIAL
DP ABS-6318E-12	Auto Batch, 12 Volt, EPDM Seals.....	\$ 1416.00
DP ABS-6318V-12	Auto Batch, 12 Volt, Viton® Seals.....	1513.00
DP ABS-6318E-110	Auto Batch, 115 Volt, EPDM Seals.....	1519.00
DP ABS-6318V-110	Auto Batch, 115 Volt, Viton® Seals.....	1581.00
DP ABS-EX10	10' Extension Cable to Mt. Meter/ Controller Remotely from 12V Pump.....	95.00

12 Volt Diaphragm Pump (5.3 GPM)

For Use with a Wide Variety of Applications

- 5.3 GPM Max; 3.8 GPM @ 40 PSI
- "Demand Style" Pressure Switch; cut in 45 PSI; cut out 60 PSI
- "By-Pass" Style Also Available
- 12-Volt DC or 115V AC
- 1/2" FPT Or 3/4" Quick Tach Ports
- 5 Chamber Diaphragms
- Polypropylene Housing, Viton® Valves, Santoprene Diaphragm
- Amp Draw at 0 PSI = 5.5
- Amp Draw at 60 PSI = 18.0 (water)



Part No.	Max. GPM	Ports	Control	Voltage	SPECIAL
AQ 550	5.3	1/2" FPT	Demand	12V	\$ 156.00
AQ 551	5.3	1/2" FPT	Bypass	12V	174.00





SPECIAL PRICES

SUCTION - DISCHARGE - SEEDER HOSE



Kanaflex® EPDM Suction Hose

Abrasion Resistant Cover



Part No.	I.D.	Std. Pkg.	Working Press. PSI	SPECIAL Per Foot
KA 390SD-1-1/4	1-1/4"	100'	100	\$ 4.30
KA 390SD-1-1/2	1-1/2"	100'	100	5.20
KA 390SD-2	2"	100'	100	6.60
KA 390SD-3	3"	100'	100	11.50
* TF TSD400	4"	100'	100	24.30

* 25% Discount for Std. Package

* Kuriyama

- Heavy Duty Flexible - **ALFAGOMMA®**

EPDM Rubber Suction / Discharge Hose



Kuriyama

Heavy Duty Water Suction/Discharge Hose for agricultural, construction, and industrial applications. Black EPDM cover and tube designed to handle a variety of liquids including fertilizers and others. Wire helix reinforcement. **Maximum Working Pressure is 150PSI. Temperature Rating: -40°F to 212°F.** Not designed for applications involving acid-based chemicals or alcohols. **Cut Lengths Sold in 5' Increments Only.**

Part No.	I.D.	O.D.	Std. Pkg.	Working Pressure	Bend Radius (in @ 68°F)	Vacuum Rating (inHG)	Per Foot SPECIAL
TF T202-1	1"	1.38"	100'	150 PSI	4"	30"	\$ 5.10
TF T202-1-1/4	1-1/4"	1.65"	100'	150 PSI	5"	30"	5.70
TF T202-1-1/2	1-1/2"	1.89"	100'	150 PSI	6"	30"	5.90
TF T202-2	2"	2.40"	100'	150 PSI	8"	30"	6.30
TF T202-3	3"	3.46"	100'	150 PSI	10"	30"	9.90
TF T202-4	4"	4.49"	100'	150 PSI	12"	27"	14.20
TF T202-6	6"	6.54"	100'	150 PSI	30"	24"	27.25
TF T202-8*	8"	8.70"	20'	150 PSI	40"	21"	32.00

* Can be bought in 20' or 25' lengths from factory. No discount available.

** Additional Sizes Available - Call for Details

25% Discount for Standard Package

Kanaflex® Air Seeder Hose

Flexible Polyurethane Lined PVC Hose for air seeders, abrasive material vacuum systems and industrial vac equipment. Smooth bore, PVC corrugated OD. Lightweight and flexible in cold temperatures to -13° F. Clear with orange or black helix. The urethane lined tube provides abrasion-resistance, visual check of material flow and prevents material build up. Banding coils and CW spiral clamps are available for end connections.



Part No.	Color	I.D.	O.D.	Wt. Lbs.	Std. Pkg.	SPECIAL Per Roll
KA 100UCLRD-2	Red	2"	2.36"	0.50	100	\$ 4.20
KA 100UCLRD-212	Red	2-1/2"	2.87"	0.71	100	5.70
KA 100UCLRD-3	Red	3"	3.50"	1.00	100	8.60
KA 100UCLBK-212	Black	2-1/2"	2.87"	0.71	100	5.70

No Cut Lengths - Full Reels Only

25% Discount On Standard Pkgs.

Kanaflex® Kanaline SR Heavy Duty Suction Hose



Part No.	I.D.	Std. Pkg.	Working Pressure	SPECIAL Per Ft.
KA KLSR-2	2"	100'	100 PSI	\$ 7.30
KA KLSR-3	3"	100'	100 PSI	8.80
KA KLSR-4	4"	100'	75 PSI	12.90
KA KLSR-6	6"	60'	70 PSI	27.75
KA KLSR-8	8"	60'	60 PSI	35.25

tigerflex® Suction & Discharge Hose

Flexible EPDM Rubber Hose with green or yellow polyethylene helix combines chemical resistance with durability. Excellent cold weather flexibility. Weather resistant exterior. Lightweight and easy-to-handle. Abrasion resistant design slides easily on rough surfaces. Rated from -40 to 160° F. Full vacuum rating to 4" size at 68° F. Sold in rolls, cut to length and fitted assemblies. Red & Blue also available.



Series TG / 300G Green



Series TY / 300Y Yellow

NOTE: CUT LENGTHS SOLD IN 5' INCREMENTS ONLY

- Septic Handling
- Liquid Waste, Slurries
- Liquid & Dry Chemical
- Agriculture Liquid & Dry Fertilizers
- Grains & Seeds
- Water Transfer
- Mining
- Construction, Rental Equipment, Sewer Cleaning, Plant Maintenance

Part No.	I.D.	O.D.	Color	PSI @ 68° F.	Wt./Lbs. Per Foot	SPECIAL Per Foot
TF TG100	1"	1.40"	Green	65	.28	\$ 2.80
TF TG125	1-1/4"	1.63"	Green	60	.33	3.20
TF TG150	1-1/2"	1.93"	Green	50	.44	3.40
TF TG200	2"	2.51"	Green	50	.67	5.00
TF TG250	2-1/2"	3.07"	Green	45	.95	8.30
TF TG300	3"	3.60"	Green	45	1.14	9.70
TF TG400	4"	4.70"	Green	40	1.84	15.80
TF TG600	6"	6.85"	Green	30	3.70	32.50
TF TY100	1"	1.40"	Yellow	65	.28	2.90
TF TY125	1-1/4"	1.63"	Yellow	60	.33	3.50
TF TY150	1-1/2"	1.93"	Yellow	50	.44	3.70
TF TY200	2"	2.51"	Yellow	50	.67	5.30
TF TY300	3"	3.60"	Yellow	45	1.14	10.10
TF TY400	4"	4.70"	Yellow	40	1.84	12.70
TF TB200	2"	2.51"	Blue	50	.67	5.50
TF TB300	3"	3.60"	Blue	45	1.14	10.80
TF TB400	4"	4.70"	Blue	40	1.84	16.90

*25% Discount if Ordered in 100' Rolls

PVC Suction • Methane • Discharge Hose



Kuriyama

125PVC is a general purpose PVC suction and discharge hoses for water and fertilizers. (PVC is not suitable for some agricultural chemicals - must use EPDM). 101PS-UVOR Orange hose with extra UV inhibitor for methane gas recovery at landfills. Available in 3 sizes with internal ID to mate with OD of rigid pipe. Full vacuum rating to 4" at 72° F. **Temperature Range: -13°F. to +158°F.** This hose becomes stiff at low ambient temperatures.



125PVC Clear with White Helix for Water/Fertilizers

101PS-UVOR Orange with UV Inhibitor for Methane Gas

NOTE: CUT LENGTHS SOLD IN 5' INCREMENTS ONLY

25% Discount On Standard Pkgs.

Part No.	I.D.	O.D.	PSI@ 68°F	Std. Pkg.	Wt/C	SPECIAL Per Foot
TF 125PVC-3/4	3/4"	.95"	100'	100'	18	\$ 1.30
TF 125PVC-1	1"	1.25"	75	100'	24	1.70
TF 125PVC-1-1/4	1-1/4"	1.47"	75	100'	31	1.80
TF 125PVC-1-1/2	1-1/2"	1.75"	65	100'	38	1.90
TF 125PVC-2	2"	2.27"	60	100'	56	2.70
TF 125PVC-2-1/2	2-1/2"	2.84"	60	100'	67	3.30
TF 125PVC-3	3"	3.35"	60	100'	99	4.60
TF 125PVC-4	4"	4.45"	50	100'	146	8.20
TF 125PVC-5	5"	5.55"	35	50'	240	13.90
TF 125PVC-6	6"	6.67"	35	100'	284	14.00

* 100 ft. Package Only - No Cuts.

Less than Reel Quantities Sold in 5' Increments





SPECIAL PRICES

SPRAYER HOSE - CHEMICAL HOSE & TUBING

Black EPDM Sprayer Hose

2-Spiral (1 Braid) - 150 PSI & (2 Braid) - 200 PSI

Sold Per Foot (Can Be Cut)	W.P.	* Std.	Special Price
Part No.	Size	PSI	Per Ft.
GA 3204EB-3/8	3/8"	200	\$ 1.10

SPECIAL 25% Discount On Complete Roll



Sold In UPSABLE Reels Only	W.P.	* Std.	Special Price
Part No.	Size	PSI	Per Ft.
GA 3204EB-1/2	1/2"	200	\$ 1.00
GA 3204EB-3/4X200	3/4"	200	1.70
GA 3204EB-1	1"	200	1.80

SPECIAL Per Ft. \$ 1.00 1.70 1.80

* Standard Packages Here Can Ship UPS

Clear Vinyl Tubing



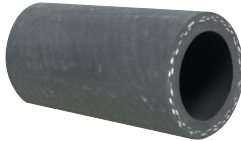
Clear Vinyl Tubing is flexible, lightweight and transparent. Provides full flow viewing. Construction is Polyvinyl Chloride (PVC). Ideal for handling a wide variety of liquids. Excellent resistance to many types of acids, detergents and alkalis. Formulated to comply with FDA and RoHS requirements. Rated from +25° to 150° F. **Sold in rolls only, no cut lengths.**

Part No.	I.D.	O.D.	Wall	Max. PSI @ 70°F	Roll Size	SPECIAL Per Roll
TF 1A	1/8"	1/4"	1/16"	65	100'	\$ 10.60
TF 1	1/4"	3/8"	1/16"	50	100'	15.30
TF 1X500	1/4"	3/8"	1/16"	50	500'	72.00
TF 2	3/8"	1/2"	1/16"	40	100'	22.00
TF 2X500	3/8"	1/2"	1/16"	40	500'	130.00
TF 2A	3/8"	9/16"	3/32"	50	100'	35.50
TF 4A	1/2"	5/8"	1/16"	25	100'	27.00
TF 4	1/2"	3/4"	1/8"	45	100'	54.50
TF 6	5/8"	13/16"	3/32"	30	100'	49.00
TF 5	5/8"	7/8"	1/8"	40	100'	65.00
TF 7	3/4"	1"	1/8"	35	100'	72.00
TF 9	1"	1-1/4"	1/8"	25	100'	91.00
TF 11	1-1/4"	1-1/2"	1/8"	20	50'	66.50
TF 13	1-1/2"	1-3/4"	1/8"	16	50'	87.00
TF 13A	1-1/2"	2"	1/4"	35	50'	151.00
TF 15	2"	2-1/2"	1/4"	30	50'	194.00

EPDM "Adapta-Flex" Agricultural SPRAY HOSE



2-Braid • 200 - 250 PSI



Sold Per Foot (Can Be Cut)	Working Pressure	Approx. Std.	Special Price
Part No.	SIZE	PSI	Per Ft.
GA 1B-3/8X2	3/8"	250	\$ 1.70
GA 1B-5/8X2	5/8"	250	2.40
GA 1B-1-1/4X2	1-1/4"	250	5.70
GA 1B-1-1/2X2	1-1/2"	200	8.00
GA 6B-2	2"	200	9.00

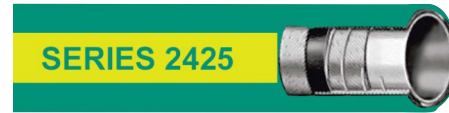
SPECIAL Per Ft. \$ 1.70 2.40 5.70 8.00 9.00

Sold In UPSABLE Reels Only	Working Pressure	Approx. Std.	Special Price
Part No.	SIZE	PSI	Per Ft.
GA 1B-1/2X2	1/2"	250	\$ 1.50
GA 1B-3/4X2	3/4"	250	2.20
GA 1B-1X2	1"	200	3.50

SPECIAL Per Ft. \$ 1.50 2.20 3.50

Series 2425 X-Link Chemical Hose

Applications: Cross-link chemical hose solves most chemical handling problems. The tube compound is resistant to 90% of chemicals, solvents and petroleum products used in industry. The heavy wall resists kinking and crushing for extra safety. Refer to the chemical guide to determine compatibility with chemicals and applications. Rated to 150 PSI.



25% Discount for Standard Package.

Tube: Cross-linked polyethylene **Cover:** Smooth Green EPDM
Reinforcement: Multiple textile plies with dual wire helix

Other Assemblies Available!

Part No.	I.D.	O.D.	Bend	Working Pressure	Wt./ (Lbs./Ft.)	SPECIAL Per Foot
GP 2425-3/4	3/4"	1.26"	4.0	200 PSI	.50	\$ 8.80
GP 2425-1	1"	1.50"	5.0	200 PSI	.55	11.90
GP 2425-1-1/4	1-1/4"	1.77"	6.5	200 PSI	.75	15.30
GP 2425-1-1/2	1-1/2"	2.01"	8.0	200 PSI	.89	16.40
GP 2425-2	2"	2.56"	10.0	150 PSI	1.18	19.00
GP 2425-2X20	2" x 20' Hose Assembly w/ 316SS Male x Female Ends					594.00

EVA Applicator Tubing

Translucent & Black



Part No.	I.D.	Reel Length	Wt.	Color	SPECIAL Per Reel
GD V1160-1/4	1/4"	100'	4 lbs.	Clear	\$ 33.75
GD V1160-1/4X500	1/4"	500'	17 lbs.	Clear	225.00
GD V1160-3/8	3/8"	500'	26 lbs.	Clear	201.00
GD VB1170-3/8	* 3/8"	500'	26 lbs.	Black	204.00
GD V100X3/8	3/8"	100'	9 lbs.	Clear	63.00
GD V1160-1/2X500	1/2"	500'	30 lbs.	Clear	245.00
GD VB1170-1/2X500	* 1/2"	500'	30 lbs.	Black	245.00
GD V100X1/2	1/2"	100'	11 lbs.	Clear	75.50
GD V1160-3/4X250	3/4"	250'	30 lbs.	Clear	277.00
GD V1160-1	1"	100'	30 lbs.	Clear	147.00

* **Black Tubing.** NOTE: EVA tubing is priced and sold in full reels only. 3/8" & 1/2" are available in 100' Packages. Working pressure @ 70°F = 75 PSI thru 1/2", 60 PSI 3/4"-1"

Braided EVA Tubing

EVAB x 1-Braid

Reinforced EVA Tubing is designed to transport a variety of chemicals and liquids. Translucent for easy view of flows. Higher working pressure than unbraided tubing.



* 25% Discount for Standard Package.

Part No.	I.D.	O.D.	Max Psi @ 70° F.	* Std. Pkg.	SPECIAL Per Foot
TF EVAB14	1/4"	.460"	250 PSI	300'	\$ 0.65
TF EVAB38	3/8"	.594"	250 PSI	300'	0.75
TF EVAB50	1/2"	.720"	250 PSI	300'	1.05
TF EVAB75	3/4"	1.00"	150 PSI	200'	1.55
TF EVAB100	1"	1.312"	150 PSI	200'	2.60

Series 2410 UHMWPE Chemical Hose

Applications: This clear high molecular weight (UHMW) polyethylene tube will handle 98% of the most common chemical without leaching and contaminating the product being conveyed. Refer to the chemical guide to determine compatibility with chemicals and applications. Rated to 200 PSI.



Tube: Opaque ultra-high molecular weight polyethylene
Cover: Corrugated Blue EPDM

Temp Rating: -40° F to 212° F

Reinforcement: Multiple textile plies with dual wire helix.
Specified length is overall assembly length.

Part No.	I.D.	O.D.	Bend	Working Pressure	Wt./ (Lbs./Ft.)	Std. Pkg. of 100' Discount	SPECIAL Per Foot
GP 2410-3/4	3/4"	1.22"	3.5	200 PSI	.42	-	\$ 10.30
GP 2410-1	1"	1.46"	4.0	200 PSI	.48	25%	14.60
GP 2410-1-1/4	1-1/4"	1.77"	4.0	200 PSI	.71	25%	16.80
GP 2410-1-1/2	1-1/2"	2.01"	5.0	200 PSI	.81	25%	16.90
GP 2410-2	2"	2.56"	6.0	200 PSI	1.17	25%	21.30
GP 2410-3	3"	3.62"	9.0	150 PSI	2.01	25%	32.50
GP 2410-2X20	2" X 20' Hose Assembly with 316SS Male x Female Ends.....					549.00	





SPECIAL PRICES

CLAMPS - SAFETY GOGGLES - GLOVES

Stainless Steel Hose Clamps

Stainless Band, Housing & Drive Screw

350 Series has 5/16" wide Band • 620 Series has 1/2" wide Band

Part No.	Clamp Range		Fits Hose I.D.	SPECIAL Per Box
	Inches O.D.	Inches		
MP 350-4	7/32 to 5/8		1/4 & 3/8"	\$ 15.70
MP 350-5	3/8 to 3/4		1/4 & 3/8"	15.70
MP 350-6	3/8 to 7/8		3/8 & 1/2"	15.70
MP 620-8	1/2 to 1		3/8 & 1/2"	15.60
MP 620-12	5/8 to 1-1/4		5/8 & 3/4"	15.90
MP 620-16	11/16 to 1-1/2		3/4 & 7/8"	17.50
MP 620-20	3/4 to 1-3/4		3/4 & 1"	18.90
MP 620-28	1-1/4 to 2-1/4		1-1/4 & 1-1/2"	16.50
MP 620-36	1-3/4 to 2-3/4		2"	19.40
MP 620-56	3 to 4		3"	26.25
MP 620-72	3 to 5		3" to 4.5"	31.25



SPECIAL
10% Discount on
20 Boxes
One Size

- 10 Clamps Per Box -



Stainless T-Bolt Clamps

With Floating Bridge

Can be torqued 3-4 times that of a worm drive clamp. 150 in/lbs. maximum torque at screws. 3/4" Smooth stainless Steel band, bolt & housing. **Note: "Ideal Brand" - Check hose O.D. and note Clamp I.D. range before ordering.** Best clamp selection on hard wall hoses in larger sizes where bandit or fastlok banding is not available.

Part No.	Hose I.D.	I.D. Range	Std. Pkg.	Per Clamp SPECIAL
TK TC138	1-1/4"	1.38" to 1.52"	10	\$ 9.70
TK TC163	1-1/4"	1.63" to 1.81"	10	9.30
TK TC175	1-1/2"	1.75" to 2.00"	10	9.90
TK TC188	1-1/2"	1.88" to 2.19"	10	12.30
TK TC194	1-1/2"	1.94" to 2.25"	10	9.90
TK TC219	2"	2.19" to 2.50"	10	10.10
TK TC231	2"	2.31" to 2.63"	10	10.20
TK TC244	2"	2.44" to 2.75"	10	10.30
TK TC250	2"	2.50" to 2.81"	10	12.60
TK TC288	2"	2.88" to 3.19"	10	10.60
TK TC325	3"	3.25" to 3.56"	10	10.90
TK TC331	3"	3.31" to 3.63"	10	10.50
TK TC338	3"	3.38" to 3.69"	10	10.30
TK TC350	3"	3.50" to 3.81"	10	11.70
TK TC400	4"	4.00" to 4.31"	10	13.40
TK TC419	4"	4.19" to 4.50"	10	9.70
TK TC425	4"	4.25" to 4.56"	10	14.20
TK TC438	4"	4.38" to 4.69"	10	11.10
TK TC450	4"	4.50" to 4.81"	10	13.10
TK TC525	5"	5.25" to 5.56"	10	11.10
TK TC575	5"	5.75" to 6.06"	10	14.40
TK TC625	6"	6.25" to 6.56"	10	14.70
TK TC650	6"	6.50" to 6.81"	10	14.70
TK TC850	8"	8.50" to 8.81"	10	15.70

Quantity Discount:
10% on Packages of 10. 20% on Packages of 100 - One Size

High Torque Stainless Clamps

- Will handle 150 in. lbs. of torque at the screw
- Good choice for dampening vibration
- Wider Range than T-Bolt clamps
- 410 Stainless screw with 5/16" Hex Head
- Utilizes 304 stainless steel 5/8" wide band
- Stainless liner under band notches to protect soft surfaces
- Large Heavy duty 304 stainless housing for maximum clamp efficiency



Part No.	Size: Clamp I.D. or Hose O.D.	Hose Size I.D.	Std. Pkg.	Std. Pkg. Discount	SPECIAL
MP 843-200	1.25" to 2.12"	1-1/4" - 1-1/2"	10	10%	\$ 6.80
MP 843-250	1.75" to 2.62"	2"	10	10%	6.80
MP 843-300	2.25" to 3.12"	2"	10	10%	7.50
MP 843-350	2.75" to 3.62"	3"	10	10%	7.90
MP 843-400	3.25" to 4.12"	3"	10	10%	8.10
MP 843-450	3.75" to 4.62"	4"	10	10%	8.30
MP 843-500	4.25" to 5.12"	4"	10	10%	8.95
MP 843-700	6.25" to 7.12"	6"	10	10%	10.40

Quantity Discount: 10% on Packages of 10. 20% on Packages of 100. - One Size

SmartSeal™ Clamps

Helps to Stop Leakage From Thermal Changes

SmartSeal™ Clamps were designed in response to the leakage attributed to thermal changes and to meet today's challenging lighter weight and space requirements.

SmartSeal™ Clamps are engineered to last longer, and perform better than traditional clamps in the most demanding environments.



SPECIAL
10% Discount on
10 One Size

Part No.	Band Width	Min. Inches	Max. Inches	Std Pkg.	SPECIAL
MP 0238	5/8"	1.64"	2.12"	10	\$ 4.80
MP 0262	5/8"	1.90"	2.38"	10	4.80
MP 0275	5/8"	2.03"	2.51"	10	4.90
MP 0288	5/8"	2.16"	2.64"	10	4.90
MP 0300	5/8"	2.29"	2.77"	10	4.90
MP 0325	5/8"	2.53"	3.03"	10	5.10
MP 0350	5/8"	2.74"	3.28"	10	5.20
MP 0375	5/8"	2.92"	3.54"	10	5.30
MP 0400	5/8"	3.12"	3.79"	10	5.40
MP 0425	5/8"	3.31"	4.04"	10	5.50
MP 0450	5/8"	3.48"	4.29"	10	6.10
MP 0512	5/8"	4.06"	4.91"	10	6.70
MP 0562	5/8"	4.55"	5.41"	10	6.50
MP 0612	5/8"	5.03"	5.90"	10	6.40



Disposable Nitrile Gloves

The Toughest Disposable Gloves Available!

Black Mamba and Blue Mamba Nitrile Gloves are designed for applications where standard disposable gloves just can't survive. The toughest disposable gloves available, can even be reused in many cases. Patented Nitrex Polymer offers superior strength and tear resistance and three times the chemical resistance of latex or vinyl. Sold in boxes of 100 ambidextrous gloves. Orange Torque Grip Also Available.

Part No.	Size	Color	Thickness	* SPECIAL
BM BLK110	Medium	Black	6.25 Mil	\$ 13.70
BM BLK120	Large	Black	6.25 Mil	13.50
BM BLK130	X-Large	Black	6.25 Mil	13.50
BM BLK140	XX-Large	Black	6.25 Mil	13.50

* 10% Discount for Cases of 10 Boxes Not Assorted

Smooth Grip



Reusable Unlined Nitrile Gloves

Part No.	Size	Thickness	Length	Per Pair SPECIAL
BS 727	Large	13-mil	14"	\$ 2.90
BS 737-11	X-Large	13-mil	14"	11.70
BS 737	Large	22-mil	15"	11.70
BS 737-10	X-Large	22-mil	15"	11.70



10% Discount on Bags of 12 & 20% on Cases - One Size

Reusable PVC Lined Gloves

Rated for NH3 Ammonia



Part No.	Size	Length	Per Pair SPECIAL
BS 7712R	Large	12"	\$ 4.80
BS 7714R	Large	14"	5.50
BS 7718R	Large	18"	5.30

10% Discount on Bags of 12 & 20% on Cases of 72 - One Size



Safety Goggles

Part No.	Case of 72 DISCOUNT	SPECIAL
WL 552 Safety Goggles - Non Vented..	25%	\$ 6.20
WL 551 Safety Goggles - Vented	25%	5.50





SPECIAL PRICES

INDUCTOR SYSTEMS & STORAGE & TRANSPORT TANKS

Freight is Extra on Tank Shipments



Poly Chem-Blade Inductor Systems



Part No.	Chem Blade Systems	Wt.	SPECIAL
DU 1A30-CB	30 Gallon Inductor with 2" Manifold, Includes "Chem Blade" Jug Rinse System.....	65 lbs.	\$ 1798.00
DU 1A30A-CB	30 Gallon Inductor with 3" Manifold System Includes "Chem Blade" Jug Rinse System.....	70 lbs.	2018.00
DU 1A60-CB	60 Gallon Inductor with 2" Manifold, Includes "Chem Blade" Jug Rinse System.....	65 lbs.	1809.00
DU 1A60A-CB	60 Gallon Inductor with 3" Manifold System Includes "Chem Blade" Jug Rinse System.....	70 lbs.	2037.00
DU 1A85-CB	85 Gallon Inductor with 2" Manifold, Includes "Chem Blade" Jug Rinse System.....	65 lbs.	1955.00
DU 1A85A-CB	85 Gallon Inductor with 3" Manifold System Includes "Chem Blade" Jug Rinse System.....	70 lbs.	2211.00

Chemical Jug Rinse System

Chem-Blade is a retrofit jug-splitting stainless knife system which opens chemical containers with speed and efficiency. Emptying a 2.5 gallon jug in mere seconds. With water supplying the built in high pressure rotary rinse head, the containers are thoroughly rinsed leaving no chemical in the container, saving money as well as time.



Chem-Blade also empties bags of dry material fast with minimal effort. Designed to fit into any tank with a 16" lid diameter.



Part No.	Description	SPECIAL
CB 0016	Chemical Blade System	\$ 781.00
DU CB1	Internal Water Plumbing Kit for Chem-Blade *....	20.30

* Terminates with 3/4" Poly Tank Fitting

Polyethylene Stackable Tanks

— 275 Gallon —
- Forkliftable (4-Way) -



Made of UV Protected blow molded HDPE with galvanized steel cages and galvanized steel forkliftable bases. Rated to 1.9 S.G. Stacks 3 high empty. 6" top lid includes proper tamper evident high capacity vent. Also includes one-way ball valve (*tamper-evident*) and **meets EPA August 2011 mini-bulk container requirements.**

Part No.	Gallons	Dimensions	Wt.	SPECIAL
CZ 275PP-Z	* 275	40" x 48" x 46" H	158 lbs.	\$ 321.00
CZ V20	2" Male Adapter Ball Valve (With Built-In Check Valve)...			24.00

* Reconditioned Tanks (New polyethylene inside reconditioned cage).



MIX-N-FIL Chemical Inductor Tanks

Polyethylene Mix-N-Fil Chemical Inductor Tanks have a 16" Fill Opening (12" Lid on RT110T), 2" FPT Bottom Outlet. Molded in gallonage marks. Plumbing kits also available.

Part No.	MIX-N-FILL Tanks & Stands	Size	SPECIAL
RT 15T	15 Gallon Inductor Tank	19" x 21"	\$ 127.00
RT 15ST	Stand for 15 Gallon Inductor Tank		112.00
RT 30T	30 Gallon Inductor Tank	24" x 26"	157.00
RT 60T	60 Gallon Inductor Tank	24" x 39"	203.00
RT 30ST	Stand for 30 or 60 Gallon Inductor Tank		114.00
RT 85T	85 Gallon Inductor Tank	30" x 44"	312.00
RT 110T	110 Gallon Inductor Tank	30" x 51"	326.00
RT 85ST	Stand for 85 & 110 Gallon Inductor Tank		205.00

Vertical & Cone Bottom Storage Tanks



10 to 20,000 Gallons Available



Call for Pricing & Freight

Standard & Heavy Duty Designs Available
Variety of Colors

Horizontal Elliptical Tanks



FS3250-88-BLK Shown On Optional Skid

Features: Free-standing elliptical tanks rated to 14 Lb./Gal. UV protected polyethylene construction with poly baffle and gallonage markers molded-in on one side and both ends. Black powder-coated steel support hoops and optional skids. Tanks have a 3" HD outlet fitting with siphon opposite an 18" lid.



TANKS - Less Hoops

Part No.	Gallon	Fillwell	Width	Height	Length	Outlet	Wt.	SPECIAL
RT FS3250-88	3250	16"	88"	79"	146"	3"	1208 lbs.	\$ 5481.00
RT FS3250-88-BLK	3250**	16"	88"	79"	146"	3"	1208 lbs.	5481.00

** Black Tank

Steel Hoops for Above Tanks (Required):

Part No.	Description	SPECIAL
RT FS3250-HP	1 Set of (4) 1-1/4" Steel Hoops with "feet" for FS3250-88 ...	\$ 1256.00

Steel Skid for Above Tanks (Optional):

Part No.	Description	Wt.	SPECIAL
RT FS23-32SK	Skid for FS2350 - 4250 Gallon Tanks, 90" x 146"	1078 lbs.	\$ 2723.00

Call for Pricing & Freight

Meter Calibration Jug

Features:

- Measurement vent tube
- Ensures precise liquid measurement regardless of foam presence
- Simplified clean out
- Quick emptying with reduced splashing
- Wide bottom for stability when filling



Part No.	Description	SPECIAL
DP CALJUG	3-5 gallon calibration jug for chemical meter	\$ 270.00



Replacement Lids & Stainless Steel and Polypropylene Tank Fittings Available!





SPECIAL PRICES

WILGER & TEEJET NOZZLES, CAPS & GASKETS

TeeJet Spray Nozzles

Save 10% On 50+ of One Size



Flat Spray
(XR & TP)



Turbo
FloodJet
(TFVS)

Part No.	Description	SPECIAL
SS XR8001VS thru XR11008VS (& VK's)	Extended Range Teejets	\$ 5.80
SS TP8001VS thru TP11006VS	VisiFlo Teejets	5.30
SS TP8001EVS thru TP9508EVS	Even Teejets	5.20
SS TFVS (Stainless)	Turbo Floodjets (All Sizes)	11.20
SS TFVP (Polymer)	Turbo Floodjets (All Sizes)	2.70

Note: Cap & Gasket are Not Included

Nozzle Cap Assembly with Gasket

Polymer Body with Stainless Insert

AIC Nozzle
Combo w/
Tip, Cap &
EPDM
Gasket



Part No.	SPECIAL
SS AIC110025VS thru AIC11010VS	\$ 12.30

Part No.
SS XRC110025VS thru XRC11008VS
SS XRC80015VS thru XRC8006VS

SPECIAL
\$ 7.15 7.30



XRC Nozzle
Cap
Assembly
with Gasket



AIXR Nozzle Combo
with Tip, Cap & EPDM
Gasket

Part No.	Description	SPECIAL
SS AIXR110015VP-CE thru 11006VP-CE	Nozzle Assembly	\$ 7.70
SS AIXR11008VP-CE thru 11010VP-CE	Nozzle Assembly	8.65

TTI Nozzle Combo with
Tip, Cap & EPDM
Gasket



Turbo TeeJet
Induction

Part No.	Description	SPECIAL
SS TTI1101015-VP-CE thru 11006-VP-CE	Nozzle Assembly, Tip, Cap & EPR Gasket	\$ 10.50
SS TTI11008-VP-CE thru 110010-VP-CE	Nozzle Assembly, Tip, Cap & EPR Gasket	12.70



TT Nozzle Combo with
Tip, Cap & EPDM
Gasket

Part No.	Description	SPECIAL
SS TT110101-VP-CE thru 11008-VP-CE	Nozzle Assembly, Tip, Cap & EPR Gasket	\$ 6.80
SS TT110101-VP-CE thru 11012-VP-CE	Nozzle Assembly, Tip, Cap & EPR Gasket	8.70

Turbo TeeJet

AITTJ60 Nozzle Combo with
Tip, Cap & EPDM Gasket



Turbo Twinjet

Part No.	Description	SPECIAL
SS AITTJ11002VP-CE thru 11006VP-CE	Turbo TwinJet Nozzle Assembly, Includes Tip, Cap & EPDM Gasket	\$ 8.20
SS AITTJ11008VP-CE thru 110015VP-CE	Turbo TwinJet Nozzle Assembly, Includes Tip, Cap & EPDM Gasket	10.10

Twin Flat
Air Inductor



TTI60 Nozzle Combo with Tip,
Cap & EPDM Gasket

Part No.	SPECIAL
SS TTI6011002VP thru 11006VP Twin Flat Air Induction Tips/Caps/Gaskets ...	\$ 11.90

APT Nozzle Combo with Tip,
Cap & EPDM Gasket



AccuPulse
Twinjet

Part No.	Description	SPECIAL
SS APTJ110015VP thru 11008VP	AccuPulse TwinJet Nozzle Only	\$ 9.70
SS APTJ110015VP-CE thru 11008VP-CE	AccuPulse TwinJet Nozzle, Cap Assembly with Gasket	10.40

QJ 360 Nozzle Body Turrets

Less Caps



QJ360 Nozzle Assemblies
for Wet or Dry Booms

Available in 3, 4 or 5 nozzle style with Viton® diaphragm. Pressures to 300 PSI. 2.25 GPM @ 5 PSI and 3.20 GPM at 10 PSI.

For wet pipe booms use either 3/4" or 1". For dry booms always use the 3/4"NYB version and add the 1/2", 3/4" or 1" single or double hose connectors. For dry boom mounting use QJ Round or Square Vari-Spacing clamps.

Standard Check/Opening Pressure is 10 PSI. (2, 5, 8, 15 & 20 PSI also available)



QJ363



CP38936NYB
CP38938NYB
CP38940NYB



CP38937NYB
CP38939NYB
CP38941NYB

QJ370 Nozzle Body Turrets

Less Caps



Wet Boom
Style



High Flow Rates In A
Compact Design

Viton®



Dry Boom
Style

Wet Boom Versions:

Part No.	Description	SPECIAL
SS QJ373-3/4NYB	3 Outlet QuickJet Nozzle Body for 3/4" Pipe	\$ 8.70
SS QJ373-1NYB	3 Outlet QuickJet Nozzle Body for 1" Pipe	8.20
SS QJ375-3/4NYB	5 Outlet QuickJet Nozzle Body for 3/4" Pipe	8.10
SS QJ375-1NYB	5 Outlet QuickJet Nozzle Body for 1" Pipe	8.60
SS QJ363-1NYBVI	1" 3-Nozzle Assembly, Viton®, Less Connector	15.80
SS QJ365-1NYBVI	1" 5-Nozzle Assembly, Viton®, Less Connector	16.70

Dry Boom Versions (Hose Barbs Included):

Part No.	Description	SPECIAL
SS QJ373-750-1NYB	3 Outlet QuickJet Nozzle Body with 3/4" Single HB	\$ 10.80
SS QJ373-750-2NYB	3 Outlet QuickJet Nozzle Body with 3/4" Double HB	10.90
SS QJ373-1000-1NYB	3 Outlet QuickJet Nozzle Body with 1" Single HB	10.80
SS QJ373-1000-2NYB	3 Outlet QuickJet Nozzle Body with 1" Double HB	13.90
SS QJ363-34NYBVI	* 3/4" 3-Nozzle Assembly, Viton®, Less Connector	15.80
SS QJ365-34NYBVI	* 3/4" 5-Nozzle Assembly, Viton®, Less Connector	15.10

* Use on Hose Fed Dry Booms & Add Connections.

Combo-Rate II Nozzle Body Systems



WL 41434-00
Combo Rate II Saddle/Body
2 Way, 3/8" Inlet. Includes
Manual Shutoff Valve (MSO)



WL 41515-00
5-Way Turret



WL 20460-04
U-Clip



WL 41100-02
Body Nut



WL 41285-00
Male Plug



WL 41100-03
Diaphragm
Check Valve



Shown here completely
assembled with
5-Way Turret & Plug

- Call Us for Pricing and Information -



DULTMEIER SALES

OMAHA, NE

(800) 228-9666

• DAVENPORT, IA

(800) 553-6975



SPECIAL PRICES

GREENLEAF & WILGER SPRAY & BOOMLESS NOZZLES



TDXL TurboDrop® Nozzles

Air Injection Minimizes Drift

- TurboDrop® XL Nozzle (TDXL) • Pressure 20 - 120 PSI
- "D" Denotes Drift Control

The TurboDrop® Venturi utilizes a patented stabilization chamber and pulsation dampener which results in an even mixing of air with the spray liquid and a tighter more uniform droplet spectrum for a unique combination of drift control and coverage.

The TurboDrop® XL nozzle is unique among air injection nozzles in that it was designed for contact chemicals, not just glyphosate (a systemic herbicide).

* Always confirm the label of your product to see approved tips.



Part No.		SPECIAL
GT TDXL11001 thru TDXL11010	Medium Pressure TurboDrop® Nozzle with Gasket	CALL
GT TDXL11001-D thru TDXL11010-D	Drift Control Turbo Drop® Nozzle with Gasket.....	CALL

TurboDrop® Dual Fan Nozzles

Air Injection Minimizes Drift



The D Version of the TurboDrop® Dual Fan Nozzles (TADF-D) were designed with dicamba, 2, 4-D and glyphosate in mind, where a coarser spray droplet is desirable. Alternating the TADF-D nozzles with the 10° fan forward and then the 10° fan backward on the boom will help counter potential loss of coverage by effectively spraying the target four times.

(TADF) may improve coverage with certain canopy types, or even help target smaller, just emerging weeds.



Part No.		SPECIAL
GT TADF01 thru TADF10	Medium Pressure Dual Fan Nozzle with Gasket.....	CALL
GT TADF01-D thru TADF08-D	Medium Pressure Dual Fan "D" Nozzle with Gasket.....	CALL

Boomless Nozzles

We Stock All of These Brand Boomless Nozzles Also!



HYPRO® BOOMNATOR® XPBoomJet®

- Call Us for Current Pricing -

TeeJet® Electromagnetic Flowmeter

- No flow obstructions, no clogging risk! -

FM9380-F75 Electromagnetic Flow Meters are a newly-designed TeeJet flow meter featuring no moving parts – eliminating the required service and maintenance costs of traditional turbine flow meters. Built with the same high-quality materials and performance reliability TeeJet is known for, the FM9380-F75 flow meter offers an impressive flow range of 0.6 to 100 GPM, maximum pressure rating of 200 PSI, and convenient TeeJet 75 Series/Banjo 200 series flange connections. Stainless steel internals and Viton seals. These 12V electromagnetic flow meters work with any conductive fluid, be it agrochemicals or fertilizers, and are unaffected by changes in fluid temperature, density, viscosity, concentration, and conductivity – ensuring precision accuracy across the entire performance range.



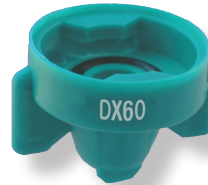
Part No.	GPM	PSI	Material	Size/Flange Connection	Wiring Connection	SPECIAL
SS FM9380	0.6-100	200	Poly	2" - 75 Series	3 Pin Deutsch	\$ 751.00
SS FM9380C	0.6-100	200	Poly	2" - 75 Series	3 Pin Conxall	751.00

COMBO-JET® SPRAY TIP SERIES: COMPARISONS AT A GLANCE



DX Series – Narrow Angle Drift Reduction

-PWM Approved-



Wilger's newest Combo-Jet® nozzle, the DX Series is a narrow-angle spray nozzle designed for exceptional drift reduction within specialty and spot spraying applications. DX spray tips are an especially effective option for spray-on-green and green-on-green optical spot spraying systems. Narrow angle nozzles allow for concentrated, more-direct applications of systemic herbicides, fungicides, and foliar fertilizers to the target plant – therefore reducing treatment costs and waste while also decreasing drift. Available in 20-, 40-, and 60-degree angle spray patterns.

Part No.		SPECIAL
WL DX40-03 thru DX40-125		\$ 11.90
WL DX60-015 thru DX60-10		11.90
WL 40250	50 Mesh Strainer.....	1.70
WL 40251	100 Mesh Strainer.....	1.70



Combo-Jet® 110 Degree Flat Fan Nozzles

The Combo-Jet® Tip-Cap with Its Snap-In Strainer is Easier to Clean and Stays Clean Longer



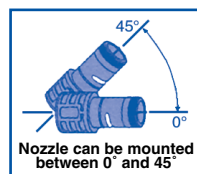
- WLMR110-01 thru MR110-30
- WLER110-01 thru ER110-30
- WLSR110-01 thru SR110-30
- WLDR110-01 thru DR110-30
- WLUR110-01 thru UR110-10

Save 10% On 50+ of One Size

- Call Us for Pricing -

Quick Turbo Floodjet Nozzles

"Turbo FloodJet Nozzles" standard features include: • Unique orifice design that produces larger droplets for reduced drift and clogging • Precise spray distribution for dramatic improvement in pattern uniformity • Stainless steel construction with color-coding for identification • Grooved side molding for automatic alignment with any quick-connect coupler • Requires only 30% overlap, enabling the use of fewer, larger nozzles.



*Adjust spray height in the field to a minimum overlap approximately 30% of each edge of pattern.

Suggested Minimum Spray Height*	
Nozzle Spacing	Spray Height
40"	18 - 20"
60"	25 - 28"
120"	50 - 55"

*When nozzle is mounted parallel to the ground.

5% Quantity Discount on 25+ One Size

Part No.	QUICK "TURBO" FLOODJETS	SPECIAL
SS QCTFVS15 thru QCTFVS80	Turbo FloodJet Nozzles	\$ 29.50
SS QCTFVS100 thru QCTFVS120	Turbo FloodJet Nozzles	40.50
SS QCKSS150 thru QCKSS210	FloodJet Nozzles	69.00
* TK P075B	3/4" Poly Coupler with Guide.....	9.50

* Quantity discounts do not apply





SPECIAL PRICES

HYPRO NOZZLE BODIES & SPRAY TIPS - STREAM NOZZLES

HYPRO®

Ultra Lo-Drift Spray Tips with Dual Air Eduction Technology for Weed Control



Features: ULD Creates Air-Filled Droplets which Significantly Reduce Spray Drift • Wide Spray Angle (120°) • Uniformity at All Pressures (15-115 PSI) • Precision Molded from Durable Polyacetal • Available in Sizes 015 to 08 • Convenient FastCap™ Available • FastCap® complete includes tip, cap, gasket and 50M strainer for sizes 015-06. Includes EPDM gasket.

10% Discount on 50+ of One Size

Part No.	Color	GPM @ 40 PSI	20" Spacing GPA @ 12MPH	20" Spacing GPA @ 16 MPH	SPECIAL
TW FCULD120015	Green	.15	3.7	2.8	\$ 11.80
TW FCULD12002	Yellow	.20	5.0	3.7	11.80
TW FCULD120025	Purple	.25	6.2	4.6	11.80
TW FCULD12003	Blue	.30	7.4	5.6	11.80
TW FCULD12004	Red	.40	9.9	7.4	11.80
TW FCULD12005	Brown	.50	12.4	9.3	11.80
TW FCULD12006	Gray	.60	14.9	11.1	11.80
TW FCULD12008	White	.80	19.8	14.9	11.80

"Jumbo" High Volume 5-Way Nozzle Turrets

For John Deere Sprayers with 1" Booms with 11/16" Diameter Boom Holes

These **High Volume 5-Way Nozzle Turrets** are designed as direct replacements for *John Deere* Sprayers with 1" Booms with 11/16" diameter boom holes. Easy Fit Connection for 1" pipe; includes stainless screw and nut. Standard with Viton® diaphragms. High volume - 6 GPM at 5 PSI pressure drop. Check valve closes at 12 PSI. 5 Nozzle lugs fit QuickJet 90° turn caps. Rated to 145 PSI.



Part No.	Description	SPECIAL
AG 51	Jumbo 5-Way Nozzle Turret for 1" Boom.....	\$ 53.50
AG 51-V	Replacement Viton® Diaphragm for Above...	5.00
AG 51-CV	Replacement 12 PSI Check Valve for Above	3.00

10% Quantity Discount on 50+ One Size



3-Hole Fertilizer Stream Nozzles (FS3)

Wilger Combo-Jet® 3-Hole Fertilizer Streamer Nozzles are designed for streaming liquid fertilizer on consistent spacing to minimize leaf burn. Color-coded for easy size and flowrate identification. These Wilger solid stream nozzles for fertilizer injection include a metering orifice and slide-in diffuser plate within a polypropylene, 3-hole streamer cap. Long-style orifices are standard on sizes 08 and up. Recommended operating pressure range of 10-60 PSI.



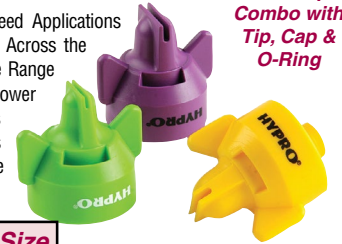
Part No.	Description	SPECIAL
WL 40443-015 thru 40443-20		\$ 8.40
WL 40250	50 Mesh Strainer.....	1.70
WL 40251	100 Mesh Strainer.....	1.70

10% Quantity Discount on 50+ Of One Size

HF High Flow 140° Wide Angle

HYPRO® Drift Reducing Tips for Fertilizer

Features: High Volume Coverage or High Speed Applications • 140° Pattern Ensures Unmatched Uniformity Across the Spray Boom & Throughout the Entire Pressure Range (20-80 PSI) • Wide Spray Angle (140°) Allows for Lower Spray Height • Droplets (XC) are Under 100 Microns are Controlled • Straight-Through Design Reduces Clogging & Easily Fits Directly on Standard Nozzle Bodies • FastCap™ Design Adds Convenience.



Fast Cap Combo with Tip, Cap & O-Ring

10% Discount on 50+ of One Size

Part No.	Color	GPM @ 40 PSI	20" Spacing GPA @ 12MPH	40" Spacing GPA @ 12 MPH	SPECIAL
TW HF140-08	White	.80	19.8	10.0	\$ 14.20
TW HF140-10	Blue	1.0	25.0	12.5	14.20
TW HF140-15	Green	1.5	37.0	18.5	14.20
TW HF140-20	Black	2.0	50.0	25.0	14.20
TW HF140-30	Tan	3.0	74.0	37.0	14.20
TW HF140-40	White	4.0	99.0	50.0	14.50
TW HF140-50	Purple	5.0	124	62.0	14.20
TW HF140-60	Yellow	6.0	149	75.0	14.30
*TW 65-VBS205 Viton @ O-Ring.....					0.90

* Quantity discounts do not apply

HYPRO® Hi-Flow Turret Nozzle Bodies for Wet or Dry Booms

Standard Equipment on Many Commercial Sprayers

Features:

- Three turret styles for an easy change of spray tips, single, 3-way & 5-way.
- Available in wet or 3/4" & 1" dry boom versions.
- Positive shutoff between each spray position.
- 2.6 GPM with a 5 PSI pressure drop through the nozzle.
- Can be used with all Quick Attach spray tips. **Caps, Gaskets & tips not included.**
- ProFlo nozzle bodies come standard with an 8 PSI EPDM check valve 4 PSI, 12 PSI & 20 PSI check valves are available.



Part No.	Nozzle Bodies for WET Booms	SPECIAL
TW 9950-0014	3 Nozzle Turret for 3/4" Wet Boom / EPDM.	\$ 18.80
TW 9950-0015	3 Nozzle Turret for 1" Wet Boom / EPDM....	18.80
TW 9950-0016	5 Nozzle Turret for 3/4" Wet Boom / EPDM.	18.80
TW 9950-0018	5 Nozzle Turret for 1" Wet Boom / Viton®....	18.80

10% Quantity Discount on 50+ One Size

Stainless Steel

Solid Stream Nozzles and Flow Regulators for Fertilizer Injection



Solid Stream Nozzles are the best nozzle for injecting nitrogen fertilizer behind coulters or cultivation devices. They can be used at medium pressure shown or at much higher pressure if used with piston pumps. Select the cap style with separate body and cap if size changes will be frequent. The threaded style is correct for permanent installations.



Stainless Flow Regulators are usually mounted behind cultivator shanks for the subsurface application of liquid fertilizers and soil fumigants. They are also used for above-ground streaming applications.

Part No.	Description	SPECIAL
SS SS0001 thru SS0040	Stainless Steel	\$ 9.20
SS H1/4USS0002 thru H1/4USS0060	Stainless	12.10

Part No.	Stainless Steel Flow Regulator	Std. Pkg.	Std. Pkg. DISCOUNT	SPECIAL
SS 4916-18 thru 4916-140		100	10%	2.70





SPECIAL PRICES

FLANGED BANJO VALVES - STRAINERS - METERS



Flange x Flange Ball Valves



Part No.	Size	SPECIAL
TK MV100CF	1" Full Port	\$ 35.75
TK MV200CF	2" Std. Port	48.50
TK MV220CF	2" Full Port	65.00
TK MV300CF	3" Full Port	156.00
TK MV300	3" Std. Port	106.00
TK MVS220CF	2" Full Port "Stubby"	60.50
TK MVS300CF	3" Std. Port "Stubby"	119.00
TK MVS300CFPP	3" Full Port "Stubby"	150.00



Flange x Male Adapter Valves "Stubby"



Part No.	Description	SPECIAL
TK VVSF200CF	2" Flange x 2" Male Adapter	\$ 49.50
TK MVSF220FP	2" FP Flange x 2" Male Adapter ...	60.50
TK MVSF300	3" Flange x 3" Male Adapter	119.00
TK MVSF300FP	3" FP Flange x 3" Male Adapter....	152.00



Flange x MPT Ball Valves "Stubby"

Part No.	Description	SPECIAL
TK VSMT200CF	2" Flange x 2" MPT Male Thread Std. Ball Valve	\$ 58.50
TK MVSMT300	3" Flange x 3" MPT Male Thread Std. Ball Valve	161.00



3-Way Bottom Load Manifold Poly Valves

Directional Flow, Right or Left • 100 PSI
• Valve Can Be Turned Off to Stop Flow • All Flanged Ports



Part No.	Description	Thru Ball	Handle Type	SPECIAL
TK MV100BL	1" Flanges	1"	T	\$ 55.50
TK MV200BL	2" Std. Port Flanges ..	1-1/2"	T	65.00
TK MV220BL	2" Full Port Flanges .	2"	Straight	92.50
TK MV300BL	3" Full Port Flanges ..	3"	Straight	244.00



3-Way Side Load Manifold Poly Valves

Directional Flow, Right or Left • 100 PSI • All Flanged Ports
Valve Cannot Be Turned Off to Stop Flow

Part No.	Description	Thru Ball	Handle Type	SPECIAL
TK MV100SL	1" Flanges	1"	T	\$ 57.00
TK MV200SL	2" Std. Port Flanges ..	1-1/2"	Straight	72.50
TK MV220SL	2" Full Port Flanges .	2"	Straight	92.50

Flanged "T" Strainers

EPDM Gaskets • 150 PSI • Stainless Screens



Part No.	Description	SPECIAL
TK MLST100-50	50 Mesh 1" Strainer	\$ 40.25
TK MLST150-50	50 Mesh 2" Strainer	67.50
TK LST130	30 Mesh Replacement Screen for 1"	22.00
TK LST150	50 Mesh Replacement Screen for 1"	19.80
TK LST180	80 Mesh Replacement Screen for 1"	20.30
TK LST1530	30 Mesh Replacement Screen for 2"	34.25
TK LST1550	50 Mesh Replacement Screen for 2"	33.50
TK LST1580	80 Mesh Replacement Screen for 2"	34.25

16 & 100 Mesh also available.

2" Flanged "Y" Strainers

2" Standard Port • EPDM Gaskets • 150 PSI W.P. • Stainless Screens



Part No.	Description	SPECIAL
TK MLS200-50	50 Mesh 2" Strainer Std. Port	\$ 83.00
TK LS220	20 Mesh Replacement Screen for 2"	45.25
TK LS250	50 Mesh Replacement Screen for 2"	44.25
TK LS280	80 Mesh Replacement Screen for 2"	45.25

2" Screens Also Available in 6, 12, 30, 100 & 120 Mesh.



Flanged "Y" Strainers 2" & 3" Full Port



• EPDM Gaskets • 75 PSI W.P. • 304 Stainless Screens

Part No.	Description	SPECIAL
TK MLS222-50	* 2" Full Port Flanged "Y" Strainer with 50 Mesh Screen	\$ 114.00
TK MLS300-20	** 3" Full Port Flanged "Y" Strainer with 20 Mesh Screen	414.00
TK LST210SS	10 Mesh Stainless Screen, 2", FP ...	71.00
TK LST216SS	16 Mesh Stainless Screen, 2", FP ...	71.00
TK LST230SS	30 Mesh Stainless Screen, 2", FP ...	62.00
TK LST250SS	50 Mesh Stainless Screen, 2", FP ...	62.00
TK LST280SS	80 Mesh Stainless Screen, 2", FP ...	71.00

* 2" FP Screens Also Available in 4, 8, & 100 Mesh.
** For Other 3" Screens Order: LS304, LS308, LS312, LS320, LS350.



Mag Meters



Designed to accurately meter liquids such as fertilizer, water, wastewater, deicing liquids and other liquids which are electrically conductive. No moving parts means less chance of damage than other styles of meter. Use with conducting liquids only. Not for Fuels.

Features: Simple & easy to use • Factory preset calibration requires no adjustment • Batch total and flow rate. Shuts down after idle for 12 minutes. • Digital readout is designed for outdoor use • Temperature range is 0° to 150° F. • Operates on six AA batteries • Off/On shutdown after 12 minutes • Warranty is 1 Year on electronics • All meter sizes hold +/-1% accuracy.

Part No.	Description	GPM	SPECIAL
TK FM100	1" FPT Mag Meter	2 - 110	\$ 783.00
TK MFM100	1" Flanged Mag Meter	2 - 110	783.00
TK MFM220	2" FP Flanged Mag Meter ...	6 - 300	876.00
TK MFM300	3" Flanged Mag Meter	14 - 670	1095.00





SPECIAL PRICES

STRAINERS - PIPE FITTINGS - CAMLOCK FITTINGS - TUBING



"Y" Line Strainers Threaded



3"

- Polypropylene
- EPDM Gaskets
- 75 PSI on 1/2" - 1-1/4"
- 150 PSI on 1-1/2" - 2"
- 50 PSI on 3"
- "T" Models Also Available



3/4"
THRU
2"

Part No.	Ports	Screen	SPECIAL
TK LS075-40	3/4" FPT	40-Mesh	\$ 31.25
TK LS075-80	3/4" FPT	80-Mesh	35.00
TK LS100-40	1" FPT	40-Mesh	30.50
TK LS125-40	1-1/4" FPT	40-Mesh	35.00
TK LS150-20	1-1/2" FPT	20-Mesh	96.50
TK LS200-20	2" FPT	20-Mesh	113.00
TK LSM300BC	3" FPT	* None	347.00
TK LSQ150-50	1-1/2" FPT	50-Mesh	96.50
TK LSQ200-20	2" FPT	20-Mesh	113.00

* Stainless Steel screens available in the following sizes: 4, 8, 12, 20, and 50. 3" for suction side use only.



3350-44N
Nylon



122 & 124A
Polypropylene
1/2", 3/4" & 1"

Line Strainers TeeJet HYPRO®

Part No.	Ports	Bowl	Screen	SPECIAL
HY 3350-44N	3/4" FPT	White	50-Mesh	\$ 19.00
HY 3350-44P	3/4" FPT	Clear	50-Mesh	24.50
HY 3350-45N	3/4" FPT	White	80-Mesh	19.00
HY 3350-45P	3/4" FPT	Clear	80-Mesh	23.30
HY 3350-61N	1" FPT	White	50-Mesh	33.25
HY 3350-61P	1" FPT	Clear	40-Mesh	39.75
HY 3350-75N	1-1/4" FPT	White	40-Mesh	34.50
HY 3350-75P	1-1/4" FPT	Clear	40-Mesh	41.25
HY 3350-116N	1-1/2" FPT	White	50-Mesh	46.25
HY 3350-116P	1-1/2" FPT	Clear	50-Mesh	52.00

Part No.	Size	Mesh	SPECIAL
SS 122-1/2PP	1/2" Strainer, Poly Head & Bowl	50	\$ 14.60
SS 122-3/4PP	3/4" Strainer, Poly Head & Bowl	50	14.20

Super Speedfit® Tube Fittings



Black Polypropylene
Also Available!



Assorted in Std Pkgs:
15% DISCOUNT on 10
20% DISCOUNT on 100
30% DISCOUNT on 1,000



Twin Bonded Nylon Tubing

Specialized Dual Nylon Tubing from Dultmeier Sales. No longer necessary to run two separate tubing runs for your fluid or liquid run lines. Chemical resistant, strong, lightweight and flexible. This unique tubing features a 1/4" OD black tube bonded to a 1/4" maroon tube. Rate to 260 PSI at 75° F. Standard with UV stabilizers for indoor or outdoor applications. Rated from -60° F to 200° F. Vacuum rated to 28" Hg. Sold in 500ft reels.



Part No.	Size	Reel	Wt	Per Reel SPECIAL
FL M54387	Dual 1/4" OD	500ft	15 lbs	\$ 825.00



Polypropylene Threaded Pipe & Flange Fittings

Less 10% on 10 (Std. Pack)



900



908



PHB

Thousands In Stock!!



Elbow



Clamp

Gasket

Coupling



Cam Lever Couplings Polypropylene & Nyglas (Yellow)

- All Types & Sizes Through 4" In Stock -

3/4" • 1-1/2" • 2" • 3" • 4"



Stainless & Aluminum
Through 6" Also Available

Less 5% on 10 of One Size



Polypropylene BALL VALVES

Stainless Bolts • Teflon Seats
• Viton® Stem Seals



Ball Valve



Union Valve
(EPDM Seal)

Part No.	Size	Pkg. Ball Qty.	SPECIAL
TK V150	1-1/2" Valve	24	\$ 46.00
TK V200	2" Valve	24	46.00
TK V200FP	2" Valve	8	62.00
TK V204FP	2" Valve	8	59.50
TK V300	3" Valve	8	99.00
TK V300FP	3" Valve	6	148.00
TK VA150	1-1/2" Nozzle	12	54.50
TK VA200	2" Nozzle	12	54.50
TK VA200FP	2" Nozzle	6	81.00
TK UV050FP	1/2" Union	24	15.80
TK UV075FP	3/4" Union	24	15.80
TK UV100FP	1" Union	24	19.50
TK UV125FP	1-1/4" Union	24	40.25
TK UV150FP	1-1/2" Union	24	39.75
TK UV200FP	2" Union	18	42.00

*Less 5% On Pkg. Quantities



Nozzle Valve

Black Poly Tubing

Part No.	Type	O.D.	I.D.	Max. PSI @ 70° F.	Color	SPECIAL
FC UP44-100B	Poly	1/4"	.170"	150 PSI	Black	\$ 10.50
FC UP44-1000B	* Poly	1/4"	.170"	150 PSI	Black	97.00
FC UP66-100B	Poly	3/8"	.250"	150 PSI	Black	21.60

* 1000' Coil



DULTMEIER SALES

OMAHA, NE

(800) 228-9666

• DAVENPORT, IA

(800) 553-6975



SPECIAL PRICES

BALL VALVES - NH3 COUPLERS, MANIFOLDS & EQUIPMENT

EVX FPT 12 Volt Off/On & Regulating Ball Valves

- 20° F. to +150° F.
- 316 Stainless Steel Ball & Stem
- Teflon Seats
- Viton® O-Rings
- 12-Volt Off/On & Regulating
- FPT Ports



Part No.	Description	FPT	Time Sec.	PSI	Ball ID	Wt.	SPECIAL
TK EVX071	* Off/On Valve	3/4"	3/4	300	3/4"	4 lbs.	\$ 356.00
TK EVX101	* Off/On Valve	1"	3/4	300	1"	4 lbs.	363.00
TK EVX121	Off/On Valve	1-1/4"	3/4	300	1"	4 lbs.	355.00
TK EVX151	Off/On Valve	1-1/2"	1-1/2	300	1-1/2"	4.5 lbs	505.00
TK EVX221	Off/On Valve	2"	1-1/2	250	2"	5 lbs.	545.00
TK EVX300	Off/On Valve	3"	4	150	3"	9 lbs.	934.00

Part No.	Description	FPT	Time Sec.	PSI	Ball ID	Wt.	SPECIAL
TK EVXR071	* Regulating Valve	3/4"	3/4	300	3/4"	4 lbs.	\$ 371.00
TK EVXR100	Regulating Valve	1"	3/4	300	1"	4 lbs.	322.00
TK EVXR151	Regulating Valve	1-1/2"	1-1/2	300	1-1/2"	5 lbs.	494.00
TK EVXR221	Regulating Valve	2"	1-1/2	250	2"	5 lbs.	552.00
TK EVXR300	Regulating Valve	3"	4	150	3"	9 lbs.	970.00

* Bolted Drop In Version

MEVX Flanged 12 Volt Off/On & Regulating Ball Valves



MEVX Flanged 12 Volt Off/On and Regulating Ball Valves. The 101, 201 and 221 Off/On Valves are bolted drop in version and can be used as replacements where size is critical in existing applications. The regulating valves are the new welded version and will not be an exact replacement. Flanged ends.

Part No.	Description	Flange Size	Time Sec.	PSI	Ball ID	Wt.	SPECIAL
TK MEVX100	Welded Off/On Valve	1"	3/4	300	1"	5 lbs.	\$ 362.00
TK MEVX101	* Off/On Valve	1"	3/4	300	1"	5 lbs.	356.00
TK MEVX200	Welded SP Off/On Valve	2"	1-1/2	300	1-1/2"	5 lbs.	517.00
TK MEVX201	* SP Off/On Valve	2"	1-1/2	300	1-1/2"	5 lbs.	517.00
TK MEVX220	Welded FP Off/On Valve	2" FP	1-1/2	250	2"	5 lbs.	545.00
TK MEVX221	* FP Off/On Valve	2" FP	1-1/2	250	2"	5 lbs.	541.00
TK MEVX300	Welded Off/On Valve	3"	4	150	3"	9 lbs.	985.00
TK MEVXR100	Regulating Valve	1"	4	300	3"	5 lbs.	372.00
TK MEVXR200	SP Reg. Valve	2"	4	300	1-1/2"	5 lbs.	532.00
TK MEVXR220	FP Reg. Valve	2" FP	4	250	2"	5 lbs.	535.00
TK MEVXR300	Regulating Valve	3"	4	150	3"	9 lbs.	1025.00

* Bolted Drop In Version.

Teejet 12V Electric Ball Valves



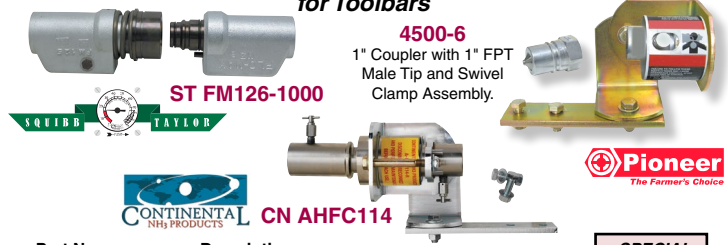
- .6 or 0.75 Second On-Off
- 1" FPT or Flange Ports, 3/4" Flow
- 32 or 100 GPM @ 5 PSI
- Wetted Parts: Nylon, Teflon, Polypropylene, and Viton®

344BEC-24C
2-Way Valve

Part No.	Ports	Valve Style	No. Ports	Flow Rate @ 5PSI	Response Time	SPECIAL
SS 344BEC-24C	1"	1 Valve, 2-Way	2	32 GPM	.75 Second	\$ 233.00
SS 356BEC-C	1" Flange	1 Valve, 2-Way	2	100 GPM	.6 Second	312.00
SS 344BEC-34C	1"	1 Valve, 3-Way	3	32 GPM	.6 Second	282.00
SS 453BEC24C	1" & Flange	3 Valve Assembly	3	32 GPM	.75 Second	730.00
SS 50515-22CP05		Motor Sub Assembly, 22 GPM				196.00
SS 50515-25CP05		Motor Sub Assembly, 25 GPM				196.00

— Other Valves Available —

NH3 Breakaway Couplers for Toolbars



Part No.	Description	SPECIAL
ST IB125	1-1/4" Break-A-Way Coupler	\$ 1413.00
ST FM126-1000	1-1/4" Break-A-Way Coupler	831.00
ST FM150-1001	1-1/2" Break-A-Way With "EZ" Bracket	1547.00
CN AHFC114	1-1/4" High Flow Coupler	664.00
CN BSWV150G	1-1/2" High Flow Coupler	1092.00
ST EZ-BRACKET	"EZ" Bracket for FM126 & FM125	185.00
PA 4500-6	* 1" FPT Pioneer NH3 Coupler Assembly	531.00
PA 4500-6M	* 1" Acme Pioneer NH3 Coupler Assembly	484.00
PA 4500-7	* 1-1/4" FPT Pioneer NH3 Coupler Assembly	653.00

* 5 Year Removal Date.



NH3 Float Gauges

Part No.	Description	SPECIAL	Discount
ST AA214E	41" Top Mount Sr.	\$ 63.00	10% On 10+

NH3 GAUGES Stainless Stems



Part No.	Range	Type	Dial	Conn.	SPECIAL
AH A620	60 PSI	Dry	2-1/2"	Bottom	\$ 12.30
AH A1520	160 PSI	Dry	2-1/2"	Bottom	12.50
AH A420	400 PSI	Dry	2-1/2"	Bottom	12.20
AH ASG604	60 PSI	Dry	4"	Bottom	23.80
AH ASG4004	400 PSI	Dry	4"	Bottom	24.50

*Less 10% On 20 or More

NH3 Distribution Manifolds



Impellicone Flow Divider



MVD Manifold System

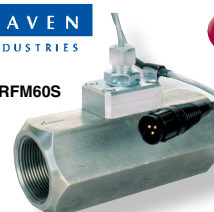
Section Control Kits Also Available
Call for Pricing

Part No.	Description	SPECIAL
ST A1805	16 Port Equa-Flo	\$ 446.00
BU IP1300	Impellicone, 13 Port	339.00
BU IP1800	Impellicone, 18 Port	455.00
CN MVD-16A	MVD, 20-150 lbs/AC	331.00
CN MVD-16A2	MVD, 150+lbs/AC	332.00

Flow Meters & Valves for NH3



RFM60S



67G22-10DY0-CF1

Part No.	Description	SPECIAL
RV RFM60S*	1-1/2" Flowmeter	\$ 1109.00
KZ S8F33-1AE9S-C01*	1" NH3 On/Off	495.00
KZ S8F33-1CE9S-D01	1" NH3 On/Off	436.00
KZ 67G22-10DY0-CF1*	1-1/4" NH3 On/Off	669.00

* Includes Raven Connection Harness.





SPECIAL PRICES

NH3 COOLERS & MONITORING SYSTEMS - HITCHES - HOSE REELS

NH3 Control-Metering Systems with Heat Exchanger

Horizontal Model shown with Meter

45 GPM & 70 GPM



High Capacity, 1-1/2", 45 GPM NH3 Control-Metering Systems with Heat Exchangers. These kits come complete with heat exchangers, mounting brackets, control and shut-off valves and all required plumbing. All that's required is a controller and wire harness. Includes 1-1/4" full port, 120 degree control valve that increases your accuracy more than typical 90 degree control valves. Twin 1-1/4" valves also provide excellent accuracy and control at low rates as well as high rates.

Standard Features

- 45 GPM 1-1/2" System Complete with valves, forged steel fittings & mounting brackets.
- Heat Exchanger Includes Stainless Inner Tubes & Bonnets.
- Inlet Y-Strainer & Stainless Steel Ball Valve Included.
- 12-Volt Control & Shut-Off Valves with KZ Motors (*Two Valves System Provides Optimal Accuracy*).
- Heat Exchanger can be disassembled for Easy cleaning & maintenance.
- 1-1/2" Stainless Flow Meter (*Sold Separately on LM Systems*).
- Preassembled for Easy Installation.
- Systems with Meters Include *Raven* Stainless Meter.

Part No.	Description	SPECIAL
CN ASF3000GH-M	1-1/2" Horizontal System With Raven Meter.....	\$ 5772.00
CN ASF3000G-M	1-1/2" Vertical System With Raven Meter.....	5826.00
CN ASF3000BD	Dual Heat Exchanger, Horizontal With Raven Meter.....	8385.00
CN ASF3000GHY2KT	70 GPM With Dual Valves, 2 Inlets.....	6327.00
RV RFM60S	1-1/2" Stainless Raven Meter.....	CALL
CN ABVT125SO	* 1-1/4" On/Off FP Valve.....	743.00
CN ACVT125	* 1-1/4" Regulating FP Valve.....	869.00
CN ACCU-COOLER	Retrofit Kit - Direct Repl. for <i>RAVEN</i> AccuFlow..	1664.00

* Includes Raven Conxall Connector.

Raven Models Also Available

Nitro-Lert™ for Rate Control Systems

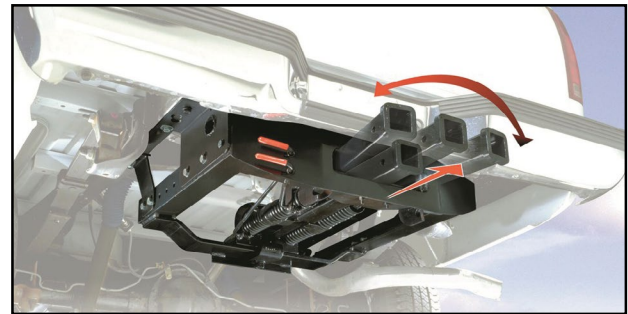


The *Hiniker Nitro-Lert Anhydrous Ammonia Knife Monitor System* is the industry leading knife monitoring system which alerts operators to individually blocked manifold outlets, lines, or knives. Inline sensors monitor each outlet's flow variations, helping catch and correct potential application inconsistencies while also reducing downtime and overall product costs.

Call for Consultation On System Cabling



DMI Hitches



Part No.	Item Description	SPECIAL
UI 47070007	Quic'N Easy Hitch Frame	\$ 1035.00
UI 47090001	Cush'N Combo Hitch Frame	819.00
UI 47070001	Quic-Cush'N 2 Hitch Frame	872.00

*** Call With Make/Model/Year for Mounting Kits**

Large Hose Reels

For 2" & 3" Hose • Manual & 12V with Remote Controls

Super Reels™ Hose Reels are excellent for efficient and easy transfer of water and fertilizers through large 2" and 3" hoses. Great for farm, ranch, turf and other applications. All models include stainless steel swivels and non-corrosive top, bottom and side hose guide rollers. All 12-volt models include built-in hand switch and remote key fob for power in and power out reeling. **Not for use with fuels or oils.**

FEATURES:

- Heavy-Duty Steel Construction with Powder Coat Finish
- Stainless Steel Swivel with FPT Inlet/Outlet
- 12 Volt Motor with Built-On Switch & One Key FOB Remote Control
- Manual Clutch Lockout for Easy Pull-Out
- Non-Corrosive Guide Rollers
- Viton® Seals
- Chain Guard
- Manual Crank Handle Included On All Models

Part No.	Hose Size I.D.	Rewind	Ship Wt.	Price Ea.
FS HR200SS	2" & 2"	Manual	150 lbs	\$ 1456.00
FS HRE200SS	2" & 2"	12 Volt	150 lbs	1997.00
FS HRE300SS	3" & 3"	12 Volt	255 lbs.	3089.00
FS CHR1121	Additional Key Fob Remote Control....			43.25
DU 1AB2	2" Air Blowout Elbow Kit*			22.90
DU 1AB3	3" Air Blowout Elbow Kit*			76.50

* Each Kit includes (1) Poly Port Flange Elbow with 1/4" Gauge Port, (1) Flange by FPT Adapter, (1) Flange Clamp, (1) EPDM Gasket - for connection to hose reel inlet.

No FREE Freight



CHR1121 Key FOB Remote
(One Key Fob Included with All Electric Models)

HOSE CAPACITIES IN FEET	Hose I.D.		DIMENSIONS				
	2"	3"	Inlet	Outlet	Length	Width	Height
FS HR200SS	75'	—	2"	2"	30"	31"	27"
FS HRE200SS	75'	—	2"	2"	30"	31"	27"
FS HRE300SS	100'	75'	3"	3"	41"	31"	39"

* Manual Crank Handle Adds 5" to Overall Width.



DULTMEIER SALES

OMAHA, NE

(800) 228-9666



DAVENPORT, IA

(800) 553-6975



SPECIAL PRICES

NH3 KNIVES - SHANKS - VALVES - HOSE - WATER TANKS

Safety Water Containers

Part No.		
PH 76410	Top Mount Water Container (5 Gallon)...	SPECIAL \$ 82.50
PH 76411	Side Mount Water Container (5 Gallon)...	70.50
LL R70	Top Mount Water Container (6.9 Gallon)	162.00

SPECIAL
5%
Discount
On 5+
One
Item

Side Mount NH3 Knives

- Standard with 3/8" NH3 tubes; 3/8" x 3/4" vapor tubes models also available
- Excellent sealing & wearing characteristics
- Knives in stock from Hi-Pro Mfg., Shield & Wako

Part No.		
WC MAG40	7/16" Side Mount with 3/8" Tube	\$ 60.50
WC MAG40BTS	7/16" Side Mount with 3/8" Tube, with Sealer	69.00
WC MAG50	1/2" Side Mount with 3/8" Tube	61.50
WC MAG50BTS	1/2" Side Mount w/3/8" Tube, with Sealer	74.50
WC W154	1/2" Gopher Knife with 3/8" Tube	55.50
WC W158	MAG50 Knife with 3/8" & 3/4" Double Tube ..	86.50
HP B33MOLE	B33 Mole Knife	49.00
HP B33MOLE-X	B33 Mole with Vapor Tube	61.50
HP MINIMOLE	Mini-Mole Knife	49.00
HP MINIMOLE-X	Mini-Mole with Vapor Tube	60.50
BE DF-1PM	Shield Knife	63.50
BE DF-1PM34DA	DF-1PM with Vapor Tube	95.00

SPECIAL
5%
Discount
On 50+
One
Item

Spring Shanks

Part No.		
BE CS1236	BlueJet Shank	SPECIAL \$ 145.00
BE KSC1295	2x1 BlueJet Shank	96.00
BE KSC1298	2x1 DMI Shank	97.00

SPECIAL
5%
Discount
On 10+
One
Size

Parker 7262 Anhydrous Ammonia Nylon Hose Assemblies (SS Available)

- Custom Lengths Available -

Part No.	I.D.	O.D.	Ends	Length	Bend Radius	SPECIAL Price
ST AN10003	1"	1.51"	1" MPT	3'	10"	\$ 74.00
ST AN10005	1"	1.51"	1" MPT	5'	10"	100.00
ST AN10010	1"	1.51"	1" MPT	10'	10"	162.00
ST AN10012	1"	1.51"	1" MPT	12'	10"	185.00
ST AN10015	1"	1.51"	1" MPT	15'	10"	224.00
ST AN10020	1"	1.51"	1" MPT	20'	10"	284.00
ST AN12503	1-1/4"	1.78"	1-1/4" MPT	3'	12"	131.00
ST AN12505	1-1/4"	1.78"	1-1/4" MPT	5'	12"	169.00
ST AN12510	1-1/4"	1.78"	1-1/4" MPT	10'	12"	262.00
ST AN12512	1-1/4"	1.78"	1-1/4" MPT	12'	12"	301.00
ST AN12515	1-1/4"	1.78"	1-1/4" MPT	15'	12"	356.00
ST AN15012	1-1/2"	2.03"	1-1/2" MPT	12'	14"	485.00
ST AN15015	1-1/2"	2.03"	1-1/2" MPT	15'	14"	590.00
ST AN20020	2"	2.75"	2" MPT	20'	16"	1121.00



NH3 Tank Valves & Fittings

SPECIAL PRICES ON SELECT CONTINENTAL & SQUIBB TAYLOR VALVES:

CN A400	\$31.50	CN A524B	\$24.80	CN B1350	\$139.00	ST A480N-45	\$465.00	CN A1507F	\$414.00
CN A400A	\$31.75	CN A525B	\$40.75	CN B526C	\$82.50	ST A525P	\$211.00	ST AL361	\$517.00
CN A402VA	\$57.50	CN A577B	\$79.00	CN A577C	\$136.00	ST A520R	\$277.00	CN A2525	\$239.00
CN A417A	\$230.00	CN B1201	\$188.00	ST A521P	\$184.00	ST AL1520BF	\$292.00	CN A1406F	\$297.00
CN A411	\$16.30	CN B1206E	\$178.00	CN A214L	\$290.00	CN A215L	\$406.00	STAR491NP-70	\$350.00
CN A1000	\$103.00	CN A1625	\$259.00	ST AL343AS	\$510.00	ST A493NR-95	\$513.00	ST 109	\$255.00
ST AL362	\$544.00	ST A484N-45	\$335.00	CN A577C-LC	\$290.00	ST AL316P	\$441.00	ST 111	\$415.00
CN AQOVM-100	\$ 472.00	CN AQOVM-125	\$ 472.00	CN A411-HB	\$ 44.00				



SPECIAL PRICES

STORAGE TANKS - VALVES/ACTUATORS - MIXING SYSTEMS

Steel & Fiberglass Storage Tanks

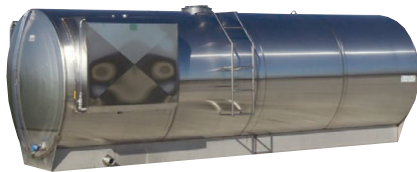
FEATURES: (2) 3" FPT Couplings (One Siphon) may be threaded or flanged • 24" Bolted Manway • (4) Carbon Steel Combination Lift Eyes/Anchor Lugs • 3/4" Sight Tube, Stainless Fittings, Stainless "Deadman" Valve, S.S. Wind Guards • Exterior Pigmented (Colored) Tan or White.

Gallons	Diameter	Height
8,400	12'	10'
10,150	12'	12'
12,600	12'	15'
16,800	12'	20'
21,000	12'	25'
25,350	12'	30'
29,600	12'	35'

Call for Delivered Price



Stainless Steel, Cone & Transport Tanks Also Available



— Call Us for Details and Pricing —

Dultmeier Chemical Mixing System

The **Dultmeier QUICK CHEM-MIX** station gives you the ability to add and meter all of your bulk chemicals without using 12-volt chemical pumps and flow meters for each product. One gear meter measures each product without the need to recalibrate for each one and includes 2" or 3" bottom inductors with bypass.



When the system is installed downstream of a properly sized centrifugal transfer pump, it pulls each product from mini-bulk tanks one at a time using the vacuum created by the inductor assembly.

DU CHEM-MIX



Several Models Available – Call for Details

Air Actuated Butterfly Valves

Include **Keystone Series 221 Butterfly Valves** with either **Keystone Air Actuators**. Available in double acting style (air to open and close) or spring return style (air to open, spring closes when air is exhausted). Valves include cast iron bodies, EPDM seats, 316SS stainless discs and 416 stainless stems. Valves are rated to 250 PSI.



Double Acting **Keystone**

DOUBLE ACTING:

Part No.	Size	Type	Wt.	SPECIAL
DU A906-20K	2"	Keystone	15 lbs.	\$ 491.00
DU A906-30K	3"	Keystone	17 lbs.	541.00
DU A906-40K	4"	Keystone	21 lbs.	595.00
DU A906-60K	6"	Keystone	31 lbs.	865.00

SPRING RETURN:

Part No.	Size	Type	Wt.	SPECIAL
DU A906-20KSR	* 2"	Keystone	15 lbs.	\$ 643.00
DU A906-30KSR	* 3"	Keystone	20 lbs.	724.00
DU A906-40KSR	* 4"	Keystone	21 lbs.	778.00
DU A906-60KSR	* 6"	Keystone	31 lbs.	1202.00

* Note: These models are air actuated valves with a spring that closes valve, when there is a loss of air pressure.

Discount 5% Off 5+ One Size

Keystone Butterfly Valves & Actuators



250 PSI Rating

Stem: 416 Stainless Steel
Disc: 304 Stainless Steel
Seat: EPDM
Body: Cast Iron



Double Acting Actuator

Part No.	Ports	SPECIAL
KE 906-20	2"	\$ 128.00
KE 906-25	2-1/2"	165.00
KE 906-30	3"	156.00
KE 906-40	4"	186.00
KE 906-50	5"	259.00
KE 906-60	6"	293.00
KE 790-200	2"-4" Actuator	374.00
KE 790-300	5"-6" Actuator	541.00

Discount 5% Off 5+ One Size

Piisi Portable DEF Tank Package

Standard Features:

- 58 or 116-Gallon Capacity
- SB325 DEF Automatic Nozzle
- 12V DC DEF Pump
- 13 Ft Discharge Hose
- 6.5 Ft Pump Power Cables with Clamps
- Lockable Lid
- Pallet Jack Base for Easy Loading or Unloading
- 9 GPM Pump
- 20 Min Duty Cycle
- Inlet is 2" BSP



PPT116



PPT58



No FREE Freight

Part No.	Description
PU PPT58	Portable DEF Tank Pkg, 58 Gal, 12V, 9GPM
PU PPT116	Portable DEF Tank Pkg, 116 Ga, 12V, 9GPM
PU F2066	12 Volt, 18 Ft. Power Cable Extension with Clamps.

Call for Pricing





Box 45565

Omaha, Nebraska 68145-0565



Or Current Resident

PRSR STD
U.S. POSTAGE
PAID
OMAHA, NE
PERMIT NO. 314

OMAHA, NEBRASKA
13808 Industrial Road
Omaha, NE 68137

TOLL-FREE 1-800-228-9666
LOCAL 1-402-333-1444
FAX No. 1-402-333-5546
E-MAIL dultmeier@dultmeier.com

DAVENPORT, IOWA
601 West 76th Street
Davenport, IA 52806

TOLL-FREE 1-800-553-6975
LOCAL 1-563-386-0930
FAX No. 1-563-386-5448
E-MAIL dultmeier@dultmeier.com

**2025 Early Order
Specials Inside!**



© Dultmeier Sales 2025

SPECIAL!

**2025 EARLY ORDER
SPECIAL PRICES GOOD THRU 3/03/25**

Limited Quantities Available On Some Items - Prices Subject to Change Without Notice

E.O. 01/25

**Complete High Volume Diesel
Transfer Pump Units**

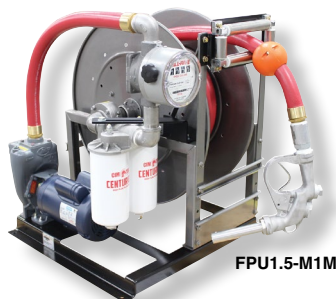


FPU1P

These rugged units are designed for high volume diesel transfer so you can fill equipment quickly and save valuable time. 1" Units will provide **32 GPM** and 1-1/2" units will provide **60 GPM**.

Drive Options:

- Gas Engine • Electric Motor • Less Engine



FPU1.5-M1M



Scan our QR code to watch a video about these units

Part No.	Description	Flowrate	Hose Size	SPECIAL
DU FPU1P	1" Diesel Transfer Unit	32 GPM	1"	\$ 3784.00
DU FPU1.5P	1-1/2" Diesel Transfer Unit	60 GPM	1-1/2"	5593.00
DU FPU1-M1	1" Diesel Unit, 3 HP Motor	32 GPM	1"	4673.00
DU FPU1.5-M1	1-1/2" Diesel Unit, 3 HP Motor	60 GPM	1-1/2"	6548.00
DU FPU1.5-M1M	1-1/2" Diesel Unit, 3 HP, with Meter	60 GPM	1-1/2"	7326.00

**Mix-A-Tote™
IBC Tote Mixer**

The **Mix-A-Tote™ Agitation System** is designed to aid growers, ag retailers, and chemical wholesalers in performing safe, convenient mixing processes in IBC storage containers. This IBC tote mixer remixes settled or separated liquids and suspended solids and can also be used to blend custom mixtures in a tote before transfer to other systems. No brackets or auxiliary attach points are needed – the mixer installs directly through the tote's threaded lid opening. A multi-impeller design creates "up-pumping" agitation, eliminating vortexing and creating an "enveloping effect" for rigorous mixing.

Fits all standard IBC totes with a 6" lid.

Features:

- 3/4 HP single or three phase electric motor
- Conveniently placed toggle switch with reversible rotation control
- Easy-to-attach, direct-mount IBC lid adapter
- No brackets required – ergonomic handles for easy transfer between totes
- All 300 series stainless steel metal components
- Proven multi-impeller agitator design



Part No.	Description
CX MAT-1PH	1-Phase Mix-A-Tote
CX MAT-3PH	3-Phase Mix-A-Tote

SPECIAL
\$ 1518.00
1582.00