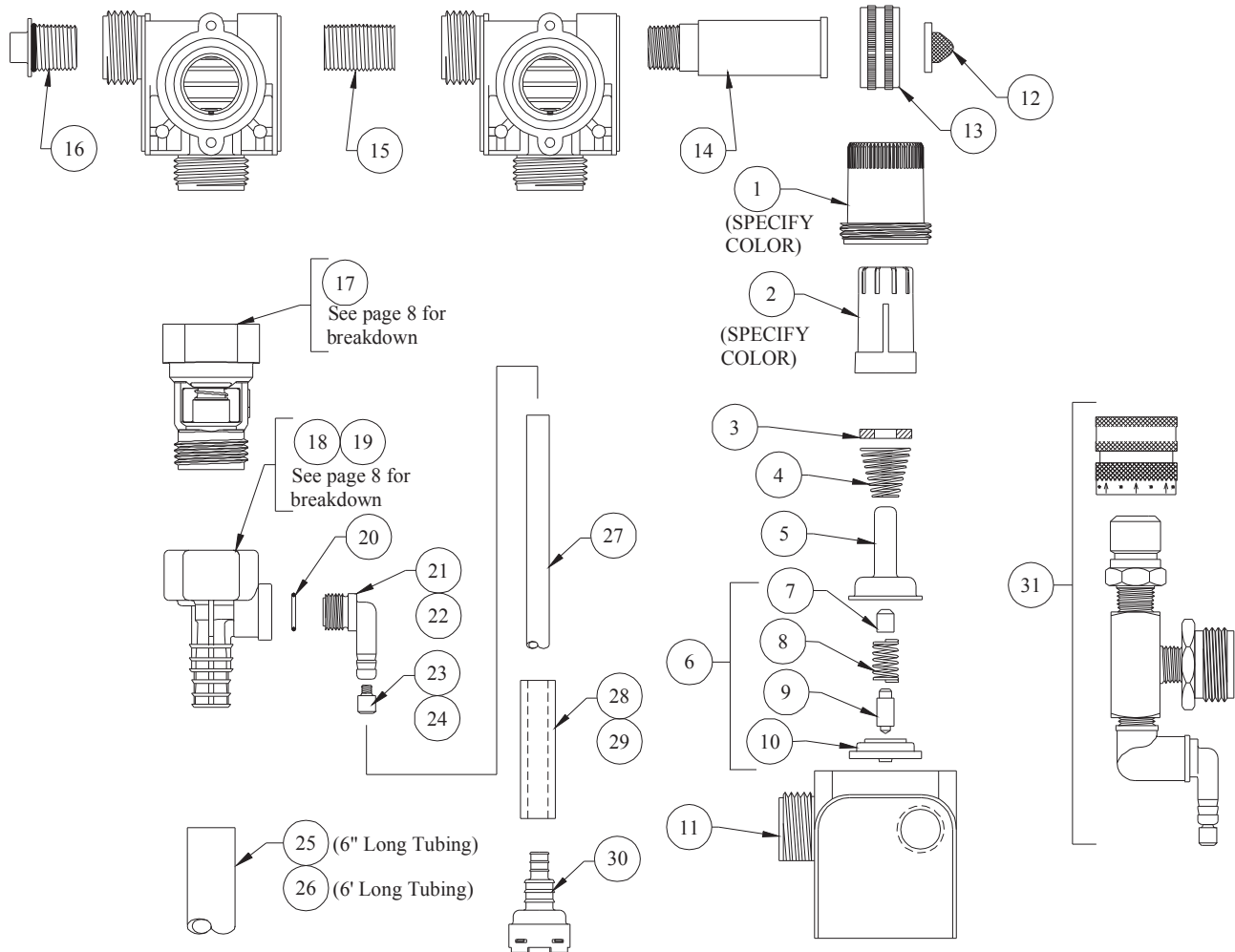


# DEMA BLEND CENTER MODEL 681GAP-3



QTY.	PART NO.	DESCRIPTION
1	66-139	Magnet Housing (Specify Color)
2	66-140	Push Button (Specify Color)
3	63-35	Magnet
4	63-36	Spring
5	41-7-25	Enclosing Tube
6	63-87	Valve Repair Kit
7	63-37	Spacer
8	41-1-8	Kick-off spring
9	63-38	Plunger
10	41-15-5	Diaphragm
11	63-39	Valve Body
12	100-38	Strainer Washer
13	65-10-2	Hose Coupling
14	65-14-2	Hose Fitting Stem
15	66-31	Close Nipple
16	66-153	Pipe Plug & O-Ring Assy.
17	16-30	Action Gap Assembly

QTY.	PART NO.	DESCRIPTION
18	61-22GAP-2	4 GPM (1/4" Barb) Proportioner (Gray)
19	61-22GAP-1	4 GPM (3/8" Barb) Proportioner (Green)
20	63-78	O-Ring
21	63-79	Inlet Barb (1/4" Barb)
22	63-80	Inlet Barb (3/8" Barb)
23	100-15K	Metering Tip Kit-14 Sizes (For 1/4" Barb)
24	61-9K	Metering Tip Kit-13 Sizes (For 3/8" Barb)
25	16-3-6	1/2" I.D. X 6" Lg. Vinyl Outlet Tube (1 GPM Only)
26	61-21	1/2" ID X 6' Lg. Vinyl Outlet Tube (4 GPM Only)
27	100-12-16	1/4" ID X 28" Lg. Vinyl Supply Tubing
28	61-107-2	Ceramic Weight (For 1/4" Tube)
29	61-107	Ceramic Weight (For 3/8" Tube)
30*	100-16E-	Foot Valve

### ACCESSORIES

QTY.	PART NO.	DESCRIPTION
31	68-6-QD2	Pressure Indicating Tee

\*Foot Valve also available with silicone (100-16S-) or Viton (100-16V-) rubber seals. Please specify material when ordering.