

# DEMA® MANIFOLD VALVE MODELS: 491M AND 492M

## DEMA® SOLENOID VALVE MODELS: 491S AND 492S

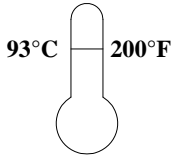
### **INSTALLATION INSTRUCTIONS**

**1. INSTALLATION:**

Models 491M and 491S have 1/8" NPT and Models 492M and 492S have 1/4" NPT female pipe connections. The valves may be installed in any position other than with the coil down. Make sure fluid flows in the direction of the markings on the body indicating **IN** and **OUTLET**. Apply pipe dope to male threads, hand tighten, and then turn 1 1/2 times with a wrench. **Note: Wiring must comply with Local and National Electrical Codes.**

**2. FLUIDS:**

Valves are intended for water, air, light oil, and other noncorrosive fluids. They should ***not*** be used for gasoline and other hazardous or explosive fluids. Maximum fluid temperature is 200° F (93.3°C). Ambient temperature shall not exceed 120°F (48.8°C).



**WARNING: NOT FOR USE WITH HAZARDOUS OR CORROSIVE OR EXPLOSIVE FLUIDS.**

**3. OPERATION:**

When the solenoid coil is energized, the plunger is pulled up, thus opening the "port". This releases the pressure above the seat. When the coil is de-energized, the solenoid plunger is pushed down by the kick-off spring and closes the port.

**4. SPECIFICATIONS:**

Maximum operating pressure differential: 125 PSI  
 Safe working pressure: 300 PSI  
 Flow factor (CV): Dependent on orifice – Refer to catalog.  
 Maximum temperature: 180 degree fluid temp.  
   120 degree ambient temp.  
 Power: 10 Watts  
 Volt-Amp rating:

	<b>120/60</b>	<b>24/60</b>
<b>INRUSH</b>	24	24
<b>HOLDING</b>	15	14

**5. TROUBLE SHOOTING:**

- A) Failure to open:
- 1) No power or low voltage.
  - 2) Coil burnout (over voltage) or an open circuit to coil connections.
  - 3) Dirt, scale or sludge may prevent the plunger from operating.
  - 4) Pressure differential exceeds the MOPD rating of the valve.
  - 5) Metering stem may be in closed or restrictive position.
- B) Failure to close:
- 1) Coil still energized.
  - 2) Pressure in the outlet or valve installed backward.
  - 3) Dirt, deposits, on valve seat or enclosing tube, keeping plunger from closing.
  - 4) O-Ring beneath valve seat (26.17/23.11V/23.11) (models 491M & 492M) may be missing.
- C) Water Hammer:
- Quick acting valves may cause water hammer when operated. If this occurs, it may be minimized by the use of a standpipe or other commercially available shock absorber installed near the valve inlet.

**CAUTION: WHEN SERVICING THE VALVE, BE SURE THAT REPLACEMENT PARTS HAVE BEEN INSTALLED ACCORDING TO THE DRAWING ON THE LAST PAGE.**

**DEMA® MANIFOLD VALVE MODELS: 491M AND 492M**  
**DEMA® SOLENOID VALVE MODELS: 491S AND 492S**  
**INSTALLATION INSTRUCTIONS**

**RETURNS:** **NO MERCHANDISE MAY BE RETURNED FOR CREDIT WITHOUT DEMA'S WRITTEN PERMISSION. RETURN MERCHANDISE AUTHORIZATION NUMBER REQUIRED IN ADVANCE OF RETURN.**

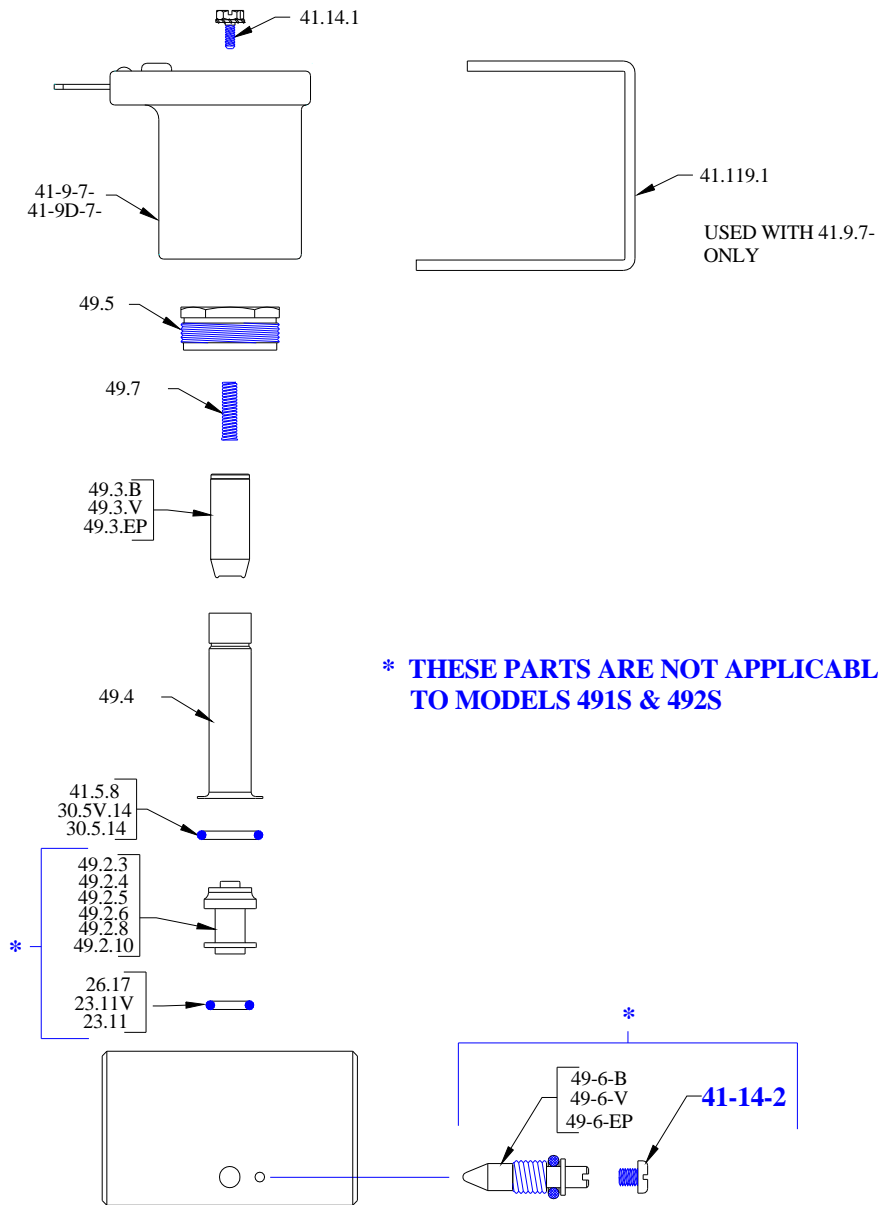
**WARRANTY:** DEMA products are warranted against defective material and workmanship under normal use and service for one year from the date of manufacture. This limited warranty does not apply to any products which have a normal life shorter than one year or failure and damage caused by chemicals, corrosion, improper voltage supply, physical abuse, or misapplication. Rubber and synthetic rubber parts such as "o"- rings, diaphragms, squeeze tubing and gaskets are considered expendable and are not covered under warranty. This warranty is extended only to the original buyer of DEMA products. If products are altered or repaired without prior approval of DEMA, this warranty will be void.

Defective units or parts should be returned to the factory with transportation prepaid. If inspection shows them to be defective, they will be repaired or replaced without charge, F.O.B. factory. DEMA assumes no liability for damages. Return merchandise authorization number, to return units for repair or replacement, must be granted in advance of return.

# DEMA® MANIFOLD VALVE MODELS: 491M AND 492M

## DEMA® SOLENOID VALVE MODELS: 491S AND 492S

### INSTALLATION INSTRUCTIONS



PART NO.	DESCRIPTION
30-5-14	O-RING SEAL (EP)
30-5V-14	O-RING SEAL (VITON)
41-5-8	O-RING SEAL (BUNA-N)
41-14-1	TOP PLUG SCREW
41-14-2	RETAINING SCREW (USED WITH MODELS 491M(O)M & 492M(O)M ONLY)
41-9-7-	NAME (SPECIFY VOLTAGE)
41-9D-7-	NAME (SPECIFY VOLTAGE)
41-119-1	BRACKET (USED WITH 41-9-7- ONLY)
49-2-3	VALVE SEAT 3/64
49-2-4	VALVE SEAT 1/16
49-2-5	VALVE SEAT 5/64
49-2-6	VALVE SEAT 3/32

PART NO.	DESCRIPTION
49-2-8	VALVE SEAT 1/8
49-2-10	VALVE SEAT 5/32
49-3-E	PLUNGER ASSY EP
49-3-B	PLUNGER ASSY BUNA-N
49-3-V	PLUNGER ASSY VITON
49-4	ENCLOSING TUBE ASSY
49-5	TUBE NUT
49-6-E	METERING SCREW ASSY EP (USED WITH MODELS 491M(O)M & 492M(O)M ONLY)
49-6-B	METERING SCREW ASSY BUNA-N (USED WITH MODELS 491M(O)M & 492M(O)M ONLY)
49-6-V	METERING SCREW ASSY VITON (USED WITH MODELS 491M(O)M & 492M(O)M ONLY)
49-7	KICK-OFF SPRING