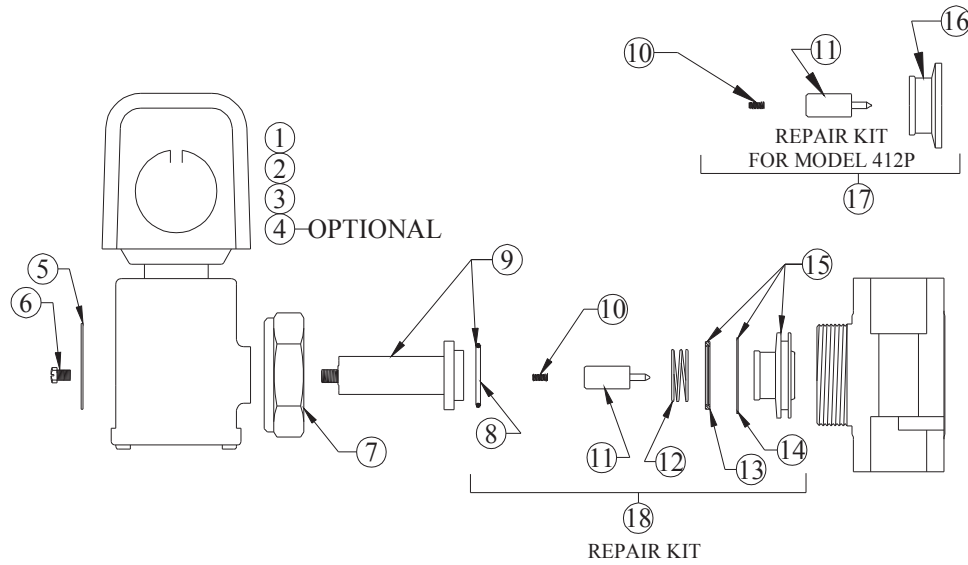


# SOLENOID VALVES, GENERAL PURPOSE

## MODELS 412P, A413P, A414P, A416P, A418P



NO.	PART NO.	DESCRIPTION	VALVE MODEL NUMBER				
			412P	A413P	A414P	A416P	A418P
1	41-9-2	Coil Assembly (Specify Voltage)	*	*	*	*	*
2	41-9C-2	(Optional) Coil Assembly With Conduit Boss (Specify Voltage)	*	*	*	*	*
3	41-9D-2	Din Coil (Specify Voltage)	*	*	*	*	*
4	41-77-100110	(Optional) Din Female Connector	*	*	*	*	*
5	41-13-7	Nameplate	*				
	41-13-8	Nameplate			*		
	41-13-9	Nameplate		*			
	41-13-10	Nameplate				*	
	41-13-11	Nameplate					*
6	41-14-1	Top Plug Screw	*	*	*	*	*
7	41-17-1	Enclosing Tube Locknut	*				
	41-17-2	Enclosing Tube Locknut		*	*		
	41-17-3	Enclosing Tube Locknut				*	
	41-17-4	Enclosing Tube Locknut					*
8	41-12-1	Tetraseal Ring		*	*		
	41-12-2	Tetraseal Ring				*	
	41-12-3	Tetraseal Ring					*
	41-12-5	Tetraseal Ring	*				
9	41-7-2	Enclosing Tube With Tetraseal Ring		*	*		
	41-7-3	Enclosing Tube With Tetraseal Ring				*	
	41-7-4	Enclosing Tube With Tetraseal Ring					*
	41-7-7	Enclosing Tube With Tetraseal Ring	*				
10	41-1-2	Plunger Spring		*	*	*	*
	41-1-3	Plunger Spring	*				
11	41-10-2	Plunger Assembly	*				
	41-10-4	Plunger Assembly		*			
	41-10-5	Plunger Assembly			*		*
	41-10-6	Plunger Assembly				*	
12	41-4-4	Closing Spring		*	*		
	41-4-5	Closing Spring				*	*
13	41-19-1	Piston Ring		*	*		
	41-19-3	Piston Ring				*	
	41-19-4	Piston Ring					*
14	41-20-2	Backup Spring		*	*		
	41-20-2	Backup Spring				*	
	41-20-2	Backup Spring					*
15	41-11-2	Piston Assembly With Ring & Backup Spring		*			
	41-11-3	Piston Assembly With Ring & Backup Spring			*		
	41-11-4	Piston Assembly With Ring & Backup Spring				*	
	41-11-7	Piston Assembly With Ring & Backup Spring					*
16	41-3-1	Piston Assembly	*				
17	41-26	412P Repair Kit	*				
18	41-27	413P Repair Kit		*			
	41-28	414P Repair Kit			*		
	41-29	416P Repair Kit				*	
	41-30	418P Repair Kit					*