

DEMA SOLENOID VALVES NORMALLY OPEN

Model O473P, O474P, & O476P

INSTALLATION INSTRUCTIONS

A. INSTALLATION:

Model O473P has 3/8" NPT connections, Model O474P has 1/2" NPT connections, and Model O476P has 3/4" connections. The valve may be mounted in any position other than with the coil lower than the body. Fluid must enter the connection marked "IN". The coil is provided with an electrical junction box. The coil leads must be attached to the proper voltage corresponding to that printed on the coil backplate. The coil and junction box may be swiveled to any direction.

B. OPERATION:

When the solenoid coil is deenergized, the plunger is held away from the diaphragm by a kickoff spring thus keeping the small "pilot port" in the center of the diaphragm open. This releases the pressure on top of the diaphragm thus allowing incoming water pressure (under the diaphragm) to lift it off the large center port and flow out.

When the coil is energized, the solenoid plunger is pulled down until it closes the pilot port. Water then passes through the small diaphragm bleed hole until pressure above the diaphragm is equal to the inlet water pressure and presses down firmly over the outlet port in order to shut off the water flow.

C. SPECIFICATIONS:

M.O.P.D. (Maximum Operating Pressure Differential): AC coils 150 PSI,

M.R.P. (Maximum Rated Pressure): 300 PSI

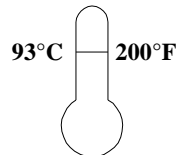
Flow Factors: Model O473 Cv=3.5, Model O474 Cv=4.0 and Model O476 Cv=5.0

Maximum Ambient Temperature: 120EF

Maximum Fluid Temperature: Buna-N rubber diaphragm 200EF, Teflon diaphragm 240EF

FLUIDS:

Valves are intended for water, air, light oil, and other noncorrosive fluids. They should *not* be used for gasoline and other hazardous or explosive fluids. Maximum fluid temperature is 200° F (93.3°C). Ambient temperature shall not exceed 120°F (48.8°C).



WARNING: NOT FOR USE WITH HAZARDOUS OR CORROSIVE OR EXPLOSIVE FLUIDS.

MODEL NO.	WATTS AC	VOLTS AC	AMPERES				RATED WATTS	D C	
			INRUSH		HOLDING			VOLTS	AMP.
			50 Hz	60Hz	50 Hz	60 Hz			
O473P O474P O476P	10	24	1.8	1.5	1.0	0.75	15	12	1.0
		120	0.38	0.33	0.21	0.15		24	0.5
		208	0.22	0.19	0.12	0.09		32	0.4
		240	0.19	0.16	0.10	0.07		115	0.10
	15	24	3.7	3.0	1.6	1.2	18	12	1.5
		120	0.73	0.60	0.33	0.24		24	0.7
		208	0.41	0.35	0.19	0.14		32	0.6
		240	0.36	0.30	0.16	0.12		115	0.15

DEMA SOLENOID VALVES NORMALLY OPEN

Model O473P, O474P, & O476P

INSTALLATION INSTRUCTIONS

WARNING: USE CARE WHEN HANDLING HAZARDOUS CHEMICALS.

D. TROUBLE SHOOTING:

CAUTION: TURN OFF WATER SUPPLY & ELECTRICITY BEFORE SERVICING.

1. Coil burn out:
 - A. Overvoltage
 - B. Debris blocking plunger movement

2. Failure to open:
 - A. Coil still energized
 - B. Pressure differential below 1 PSIG
 - C. Pressure differential above 150 PSI.
 - D. Solenoid operator impaired by dirt or damaged enclosing tube.

3. Failure to close:
 - A. No power or low voltage
 - B. Valve installed backwards
 - C. Dirt on valve seat or in diaphragm bleed hole.
 - D. Solenoid operator impaired by dirt or damaged enclosing tube.

To replace solenoid coil, disconnect wires, remove hex head nut and spacer cup and slip off coil. To inspect pilot seat disc and diaphragm, unscrew the (4) flange bolts and lift tube assembly from the valve body.

CAUTION: WHEN SERVICING UNIT BE SURE THAT REPLACEMENT PARTS HAVE BEEN INSTALLED ACCORDING TO DRAWING.

RETURNS: NO MERCHANDISE MAY BE RETURNED FOR CREDIT WITHOUT DEMA'S WRITTEN PERMISSION. RETURN MERCHANDISE AUTHORIZATION NUMBER REQUIRED IN ADVANCE OF RETURN.

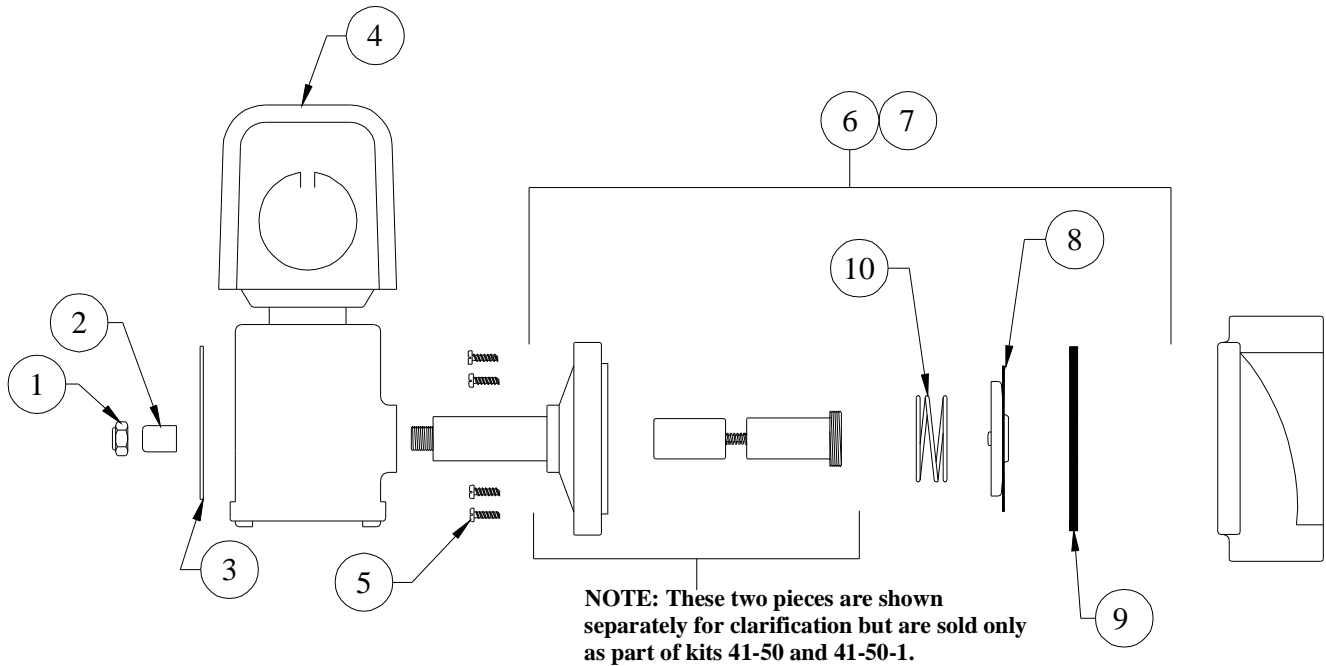
WARRANTY: DEMA products are warranted against defective material and workmanship under normal use and service for one year from the date of manufacture. This limited warranty does not apply to any products which have a normal life shorter than one year or failure and damage caused by chemicals, corrosion, improper voltage supply, physical abuse, or misapplication. Rubber and synthetic rubber parts such as "o"- rings, diaphragms, squeeze tubing and gaskets are considered expendable and are not covered under warranty. This warranty is extended only to the original buyer of DEMA products. If products are altered or repaired without prior approval of DEMA, this warranty will be void.

Defective units or parts should be returned to the factory with transportation prepaid. If inspection shows them to be defective, they will be repaired or replaced without charge, F.O.B. factory. DEMA assumes no liability for damages. Return merchandise authorization number, to return units for repair or replacement, must be granted in advance of return.

DEMA SOLENOID VALVES NORMALLY OPEN

Model O473P, O474P, & O476P

INSTALLATION INSTRUCTIONS



NO.	PART NO.	DESCRIPTION
1.	41-14-7	Coil Nut
2.	85-42-5	Spacer Cup
3.	41-13-14	Nameplate (Specify Model)
4.	O41-9-1	Solenoid Coil (Specify Voltage)
	O41-9C-1	Optional Solenoid Coil With Conduit Boss (Specify Voltage)
	O41-9D-1	Optional Solenoid Coil With DIN Connections (Specify Voltage)
5.	41-16-2	Flange Bolt (4 Req'd)
6.	41-50	Valve Repair Kit (Models O473P & O474P)
7.	41-50-1	Valve Repair Kit (Model O476P)
8.	41-15-1	Diaphragm – Buna (Models O473P & O474P)
	41-15-3	Diaphragm – Buna (Model O476P)
9.	41-12-4	O-Ring
10.	41-4-6	Closing Spring

DEMA SOLENOID VALVES NORMALLY OPEN
Model O473P, O474P, & O476P
INSTALLATION INSTRUCTIONS