

CONTINENTAL NH3 PRODUCTS

INSTALLATION, OPERATION, REPAIR AND MAINTINANCE INSTRUCTIONS

PRODUCT SERIES: A-JJ-2-L

ATTENTION: Please follow all of the instruction in this manual carefully and read the entire manual completely, failure to do so may cause the product to function improperly or fail causing serious injury or death.



ANHYDROUS AMMONIA IS AN INHALATION HAZARD AND WILL CAUSE SERIES INJURY OR DEATH. PLEASE USE EXTREME CAUTION WHEN HANDLING IT OR PERFORMING ANY MAINTENANCE ON EQUIPMENT USED FOR ANHYDROUS AMMONIA.

ATTENTION: Before performing any installation, repair or maintenance please follow the instructions below.

1. You must be certified to work with anhydrous ammonia. If you are not please seek out the appropriate agricultural department to attend a class to obtain the proper certification.
2. Wear appropriate safety goggles, gloves and breathing apparatuses.
3. Drain all tanks, hoses and piping of anhydrous ammonia COMPLETELY before removing, installing, performing maintenance or repairing any equipment.
4. Always remove device from service before performing any maintenance or repair
5. have sufficient water near by
6. Obey all local, state and federal laws regarding the handling of anhydrous ammonia

INSTALLATION & OPERATION

1. This device is designed to be an emergence shut off device that can be activated by pulling a cable from a remote location. A 25 foot cable is provided with the device but should a longer cable be required you should provide your own as to meet the length required to reach the remote location you have chosen.
2. Put pipe thread sealant on all pipe threads prior to installation.
3. Install in 2" piping system, pay close attention to flow direction. If installed backward the device will not function properly. Inlet side is the larger of the 2 body castings.
4. Install device in such a manner that the remote shut off cable is unobstructed and when pulled the device will activate by shutting down.
5. After installation test the device by pulling the cable to make sure the valve works properly.
6. After tripping the valve reopen it by continually pushing firmly on the lever. This will allow pressure to equalize on both sides of the valve allowing the lever to open. This may take several minutes to do.
7. **NEVER TRY TO OPEN THE VALVE IF NOT COMPLETELY ENCLOSED IN A PIPING SYSTEM. DOING SO WILL ALLOW ANYDROUS AMMONIA TO SPRAY OUT OF THE VALVE.**

MAINTENANCE

1. Check valve and cable regularly for leaks and wear.
2. If cable is frayed or looks thin or worn out replace cable immediately.
3. If leaking from the bonnet, between the castings or thru the seat install a repair kit A-JJ2L-RK or replace valve immediately.
4. If leaking from pipe thread try tightening the valve with wrench. When doing so make sure the cable is still unobstructed and the cable and valve still works properly. If not successful replace valve.

REPAIR

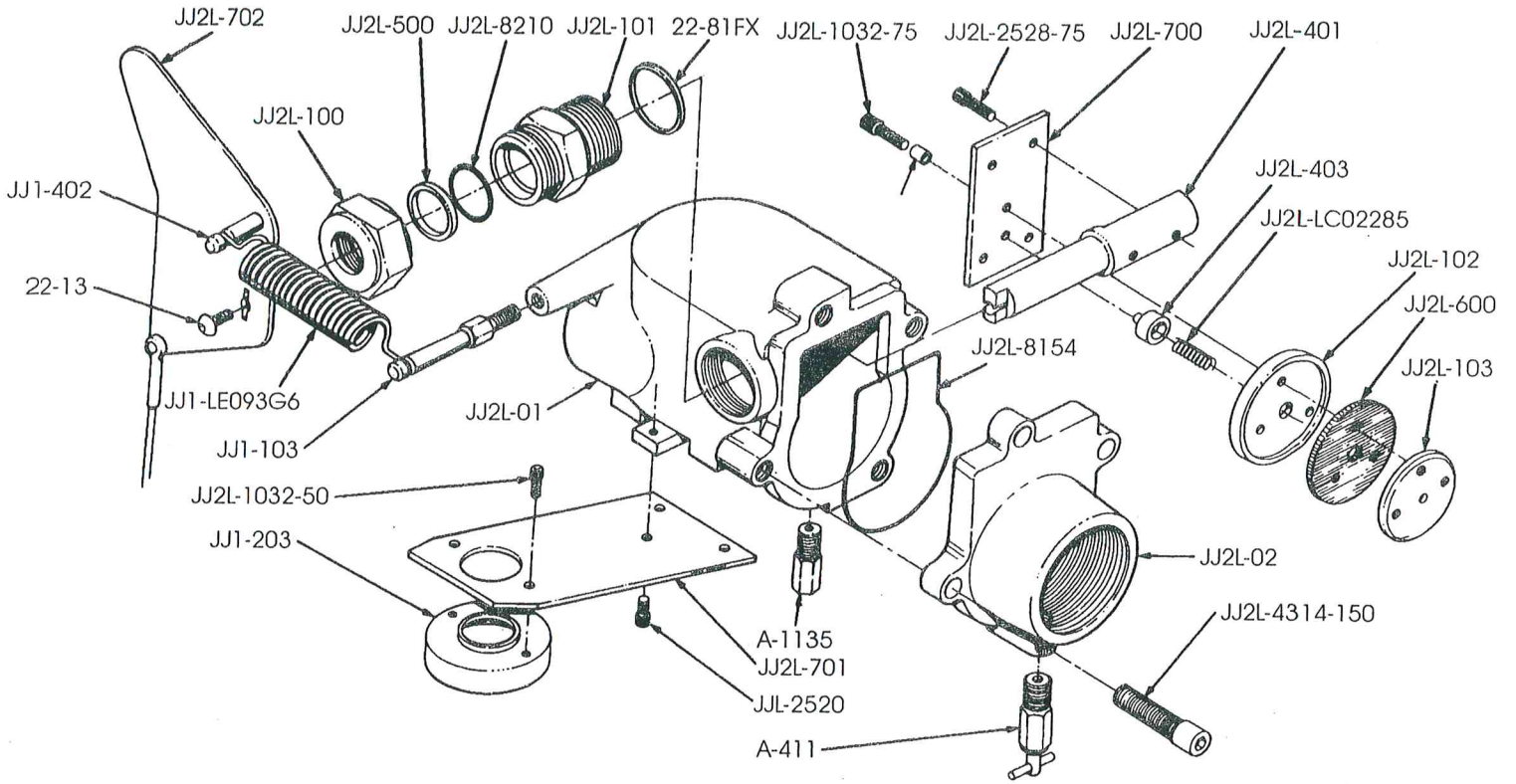
1. Remove valve from service by following the above ATTENTIONS AND CAUTIONS.
2. Remove lever spring JJ1-LE093G6
3. Remove outlet body JJ2L-02 by removing the for Allen screws JJ2L-4314-150 and replace o-ring JJ2L-8154
4. Remove swing valve seat assemble by unscrewing the 2 Allen screws JJ2L-2528-75. They can be accessed through 2" inlet pipe connection on the main body JJ2L-01 After you take out the swing valve seat assemble remove the seat retaining washer by removing the 3 Allen screws JJ2L-1032-75 and the 3 screw spacer bushings that slide over the Allen screws JJ2L-402. Replace seat and reassemble the swing valve seat assemble. Please place a little thread sealant on the three Allen screws JJ2L-1032-75 prior to reassembly. DO NOT REINSTALL THE SWING VALVE SEAT ASSEMBLY YET, that comes later.
5. Remove lever JJ2L-702 by unscrewing the lever retaining Allen Screw 22-13 from stem JJ2L-401
6. Remove bonnet assembly JJ2L-101 from body and pull stem JJ2L-401 from bonnet assembly. Remove packing nut JJ2L-100 from bonnet and remove the packing from the bonnet.
7. Replace packing in this order 1 JJ21-8210 cap seal, JJ21-501 nylon spacer, 1 JJ21-8210 cap seal, JJ21-500 aluminum packing washer and replace packing nut JJ21-100.
8. Insert stem JJ21-401 into back of bonnet by pushing gently and turning the stem simultaneously. Put some grease on the stem to prevent it from cutting the Quad-rings
9. Replace bonnet gasket 22-81-FX- and reinstall the bonnet assembly into the valve body JJ-01. Put some thread sealant on the bonnet threads prior to installing the bonnet and tighten firmly with appropriate wrench.
10. Reinstall the lever JJ2L-702 on to the stem. Make sure stamping on the lever is facing away from the body and that the lever is located properly by ensuring the guide notch is fully inserted into the lever. Reinstall the lever retaining Allen screw 22-13 and tighten firmly,
11. Reinstall the swing valve seat assembly in same manner it was removed and tighten Allen screws JJ2L-2528-75
12. Reinstall JJ2L-02 body on to main valve body JJ2L-01 with the four Allen screws JJ2L-4314-150 and tighten firmly with appropriate size wrench. Be careful not to pinch the O-ring JJ2L-8154 when doing so. Coating the o-ring with grease helps keep the o-ring in place.
13. Reinstall lever spring JJ2L-LE093G6
14. Install the repaired valve back into service by following the above installation instruction.

QUESTIONS CALL 800-537-5642

ATTENTION

If there is a shut off valve installed up stream of the A-JJ-2-L and both valves are shut off a hydrostatic condition could develop. If the system is plumbed this way a hydrostatic relief valve is required to be installed in that section of the plumbing.

Catalog Number	Description	List Price	100 Piece Ship Wgt.
A-JJ-2-L 2" EMERGENCY SHUT-OFF VALVE 2"			
22-13	SEAT RETAINER SCREW		
22-81-FX	BONNET GASKET		
A-1135	HEX STEEL PLUG 1/4" MPT		6
A-411	OUTAGE & BLEEDER VALVE - T STYLE HANDLE - 1/4" MPT ITEM # 22		25
A-JJ2L-770	SEAT & PLATE ASSEMBLY		
A-JJ2L-RK	REPAIR KIT, INCLUDES - JJ2L-102, JJ2L-103, JJ2L-402, JJ2L-403, JJ2L-LC022B5, JJ2L-1032-75, A-JJ2L-770		
JJ1-103	STATIONARY SPRING POST		
JJ1L-LE093G6	LEVER SPRING		
JJ2L-01	LIQUID SWING VALVE BODY		
JJ2L-02	LIQUID SWING VALVE BONNET		
JJ2L-100	SEAL RETAINER NUT		
JJ2L-101	BONNET		
JJ2L-102	SEAT BLOCK		
JJ2L-103	SEAT RETAINER		
JJ2L-1032-50	CONE TO BRACKET SCREW (2)		
JJ2L-1032-75	SEAT ASSEMBLY SCREW (3 REQ)		
JJ2L-2520-50	BRACKET TO BODY SCREW (3)		
JJ2L-2528-75	PLATE TO SHAFT SCREW		
JJ2L-401	SHAFT		
JJ2L-402	SPACER		
JJ2L-403	PRESSURE EQUALIZER VALVE		
JJ2L-4314-150	COVER SCREW (4 REQ)		
JJ2L-500	SEAL RETAINER		
JJ2L-600	SOFT SEAT		
JJ2L-700	SWING PLATE		
JJ2L-701	CABLE BRACKET		
JJ2L-702	LEVER ARM ASSEMBLY		
JJ2L-8154	BONNET SEAL		
JJ2L-8210	BONNET O-RING		
JJ2L-KIN5210	BONNET CAP SEAL		
JJ2L-LC022B5	SS EQUALIZER VALVE SPRING		



CONTINENTAL NH 3 PRODUCTS CO., INC.

130 YORKTOWN

P.O. BOX 225323

DALLAS, TEXAS 75222-5323

800-537-5642