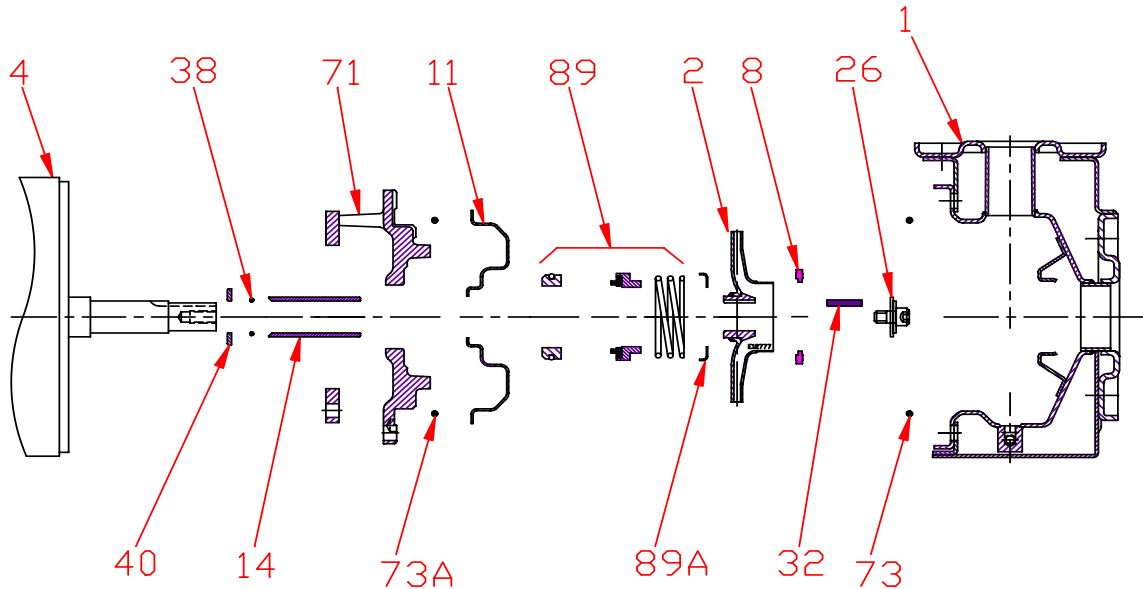




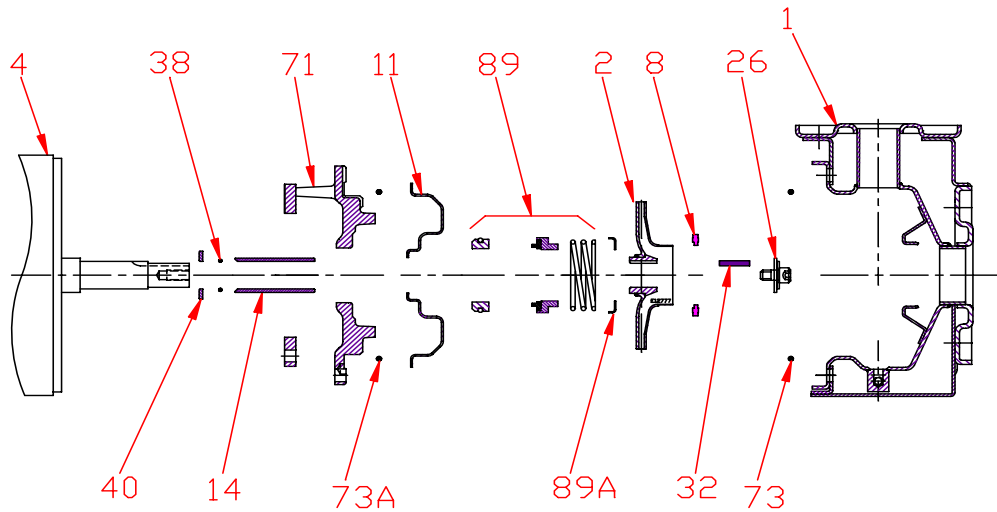
**Pump 324 • 304SS • JM Frame • 3500 RPM**



KEY NO.	PART NAME	PUMP 324
1	CASE, 304SS, 2.5 x 1.50, FLG	137.002.959
2	IMPELLER, STAINLESS, ENCLOSED, 7/8" KEYED:	
	5.98" DIA	137.002.933
	6.65" DIA	137.002.934
4	MOTOR, JM140/180	See Chart
	MOTOR, JM210	See Chart
8	RING	137.002.929
11	COVER, 304SS	137.002.911
14*	SHAFT SLEEVE, 304SS	137.002.912
26*	IMPELLER RETAINER, 304SS	118.000.111A
32*	KEY, 303SS	102.000.102
38*	O-RING, SHAFT, BUNA	116.000.117
40*	FLINGER, 304SS	104.000.165
71	ADAPTER, IRON, JM140/180	137.002.910
	ADAPTER, IRON, JM210	137.002.935
73*	GASKET, CASE, BUNA	137.002.913
73A*	GASKET, COVER, BUNA	137.003.012
89*	1-1/4" SEALS	
	TYPE 21, BN-CARB/CM	137.002.949
	TYPE 21, VN-CARB/CM	137.002.950
	TYPE 21, VN-CARB/SIL	137.002.952
	TYPE 21, VN-SIL/SIL	137.002.953
	TYPE 21, EPDM-CARB/SIL	137.002.951
89A	SEAL RETAINER, STAINLESS	137.002.948
--	REPAIR KITS:	
	BN-CARB/CM SEAL	118.000.674
	VN-CARB/CM SEAL	118.000.674A
	VN-CARB/SIL SEAL	118.000.674D
	VN-SIL/SIL SEAL	118.000.674B
	EPDM-CARB/SIL SEAL	118.000.674C

\* DENOTES COMPONENTS INCLUDED IN REPAIR KIT.

**Pump 324 • 304SS • JM Frame • 3500 RPM**



CONSTRUCTION OPTIONS		
KEY	PART NAME	STANDARD FITTED
1	Case	304SS
2	Impeller	304SS
8	Impeller Ring	POLYPHENYLENE OXIDE 20% GLASS
11	Cover	304SS
14	Sleeve	304SS
26	Retainer Assembly	304SS
32	Key	303SS
38	O-ring, Shaft	BUNA
40	Flinger	304SS
71	Motor Disc	Cast Iron
73A	Gasket, Cover	Buna
73	Gasket, Case	Buna
89	Seal Assembly	BN-CARB/CM
89A	Seal Retainer	304SS

E320JM

B17

C3243500JM