



Liquid Anti-Icing / De-Icing Equipment Products from Dultmeier Sales

OMAHA, NEBRASKA
13808 IND. ROAD
1-800-228-9666

DAVENPORT, IOWA
601 W. 76th ST.
1-800-553-6975

Limited Quantities Available On Some Items - Prices Subject to Change Without Notice
E-Mail: dultmeier@dultmeier.com or davenport@dultmeier.com • Web-Site: dultmeier.com

5/10/21

Plan Early for Next Season On Your De-Icing Equipment Needs

Stainless Brine Production System

With Ultra-Easy & Fast Hydraulic Cleanout



See Pages 3 & 4



Tanks

See Pages 9 - 10

Self Loading Dump Truck & Pickup Sprayers



See
Pages
6 - 7



Stainless Salt Screener (Portable)

See Page 5



Skid Sprayers



See Page 8



Transfer & Sprayer Pumps



See Pages 11 & 12

High Pressure Cleaning



See Page 15



* Same Day Shipping for UPS Orders placed by 3:00 PM CST;
12:00 PM for Truck Shipments, for items in stock.



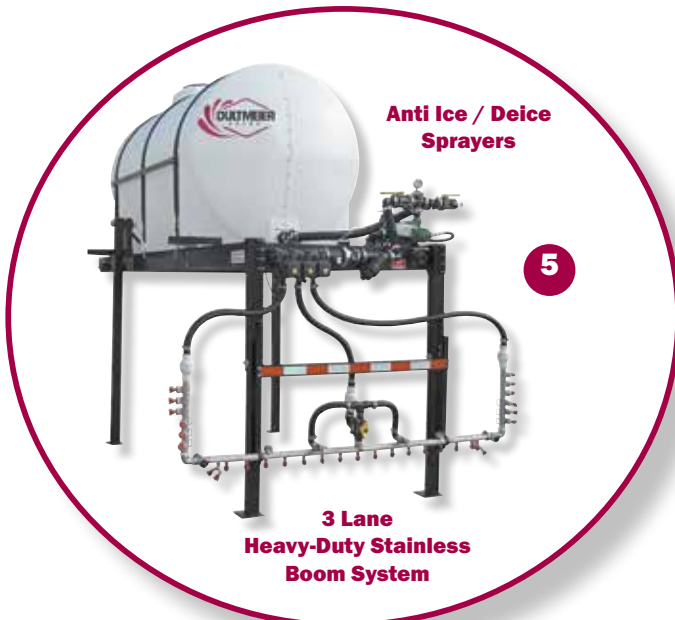
Complete Brine Production Storage & Spraying Systems

Omaha, Nebraska (800) 228-9666 • Davenport, Iowa (800) 553-6975

See Us for A Complete Brine Production, Storage, Pumping & Spraying System

We Can Provide:

- **Plumbing Diagrams & Specifications**
- **Engineering Support**
- **Equipment for Other Deicing Liquids**
- **Onsite Training**





ULTRA-EASY CLEAN OUT Stainless Brine Production System

Omaha, Nebraska (800) 228-9666 • Davenport, Iowa (800) 553-6975

BPS3000-SS & 5000-SS SYSTEM FEATURES:

- **Easiest & Fastest Cleanout On the Market. Cleans Completely in 10 Minutes:**
Self-contained hydraulic control system rotates the lower tank and trash screen, funneling all debris right into your front end loader bucket! No shoveling of the hopper required! **No need to remove your loader bucket** like other systems require for cleanout!
- **Gets You Back to Making Quality Brine Fast With No Mess.**
- **Environmentally Superior:**
All large debris and fines, including minimal spray water goes into your loader bucket, not into your parking lot or ditches.
- **Large Capacity & High Volume Production:**
6-1/4 Cu. Yd. Salt Hopper. (2) stainless water spray pipes in hopper. Heavy duty 10 gauge stainless steel & 3" x 3" x 3/16" stainless frame. 3 HP Stainless Pump. Produces 4,000 to 6,000 Gallons Per Hour!
- **Versatile Plumbing:**
Made of 2" polypropylene and stainless fittings for excellent corrosion resistance. Pump to storage, recirculate to hopper from storage, add salinity adjustment water as needed.

Fast & Easy Cleanout - No Wastewater

A Brine Production System that is really easy to clean out!



DU BPS3000-SS & BPS5000-SS Brine Production System

Patent Pending.



Large 2" water inlet plumbing includes 24 volt automatic control valve, manual throttling valve & drain valve. Overflow protection also included.



System control panel includes lockout, 24 volt transformer and waterproof switches & illuminated indicator lights for improved safety and automatic or manual operation.

Simple and Easy to Use:

- No augers or conveyors required - just load salt into top of hopper with your front end loader. Then turn on your water supply & make brine!
- One master control panel and hydraulic valve control all functions. Can be run in either automatic or manual mode.
- Portable skid frame; forklift into place quickly & easily.
- 100% stainless steel construction. 3" x 3" x 3/16" frame and 10 gauge hopper.

SPECIFICATIONS

- **MODEL:** BPS3000-SS & BPS5000-SS
- **SIZE:** Height: 96", Length: 132", Width: 73"
- **SALT HOPPER CAPACITY:** 6-1/4 cubic yards (level).
- **BRINE PUMP:** Centrifugal stainless, 3 HP, 230V, 1 Phase.
- **HYDRAULIC SYSTEM:** 1 HP, 230V, 1 Phase Pump with reservoir, control valve & pressure relief.
- **ELECTRICAL:** 230V, 1 Phase, 30A Control Panel with 24V transformer and waterproof switches.
- **EMPTY WEIGHT:** Approximately. 3,600 lbs.
- **BPS5000-SS** has the same dimensions and specs and also includes an internal overflow weir in the upper salt hopper.



ULTRA-EASY CLEAN OUT Stainless Brine Production System

Omaha, Nebraska (800) 228-9666 • Davenport, Iowa (800) 553-6975

Fastest & Easiest Clean-Out On The Market!

Step 1: Position your 8' Loader Bucket Under the Front of the Brine Production System.

Step 2: Turn the Self-Contained Hydraulic System On Using the Master Control Panel



Step 3: Pushing the “Down Button”, Rotates the Lower Tank & Pivoting Screen Down, Funneling All Debris & Excess Salt Right Into Your Loader Bucket!
Complete Cleanout in Just 10-15 Minutes & No Wastewater.

The BPS3000-SS Brine Production System is Specified & Used By

- Nebraska Department of Transportation
- Kansas Department of Transportation
- Iowa Department of Transportation
- Oklahoma Department of Transportation
- Many Cities & Other Agencies





All Stainless Salt Screener / DU SSA

Omaha, Nebraska (800) 228-9666 • Davenport, Iowa (800) 553-6975



THE ALL STAINLESS SALT SCREENER | DU SSA

SIGNIFICANTLY INCREASES BRINE PRODUCTION RATE

Easily Screens Out Most Fine Particles
so you can use more coarse salt to produce brine.

Cleaner Brine
produces cleaner brine, less fine particles going into brine storage tanks

Clean Out Much Less Often
Much longer times between clean out of brine production system.

All 304 SS Construction
Large: 9' 8" across; 8' up the grated incline. Incline angle is adjustable

Forklift Pockets
For easy movement by forklift.



AN EXCELLENT COMPLIMENT TO YOUR

BPS3000-SS

BRINE PRODUCTION SYSTEM



Anti-Ice, De-Ice & Dust Control Spray Systems

Omaha, Nebraska (800) 228-9666 • Davenport, Iowa (800) 553-6975

1065 & 1800 Gallon Self-Loading Anti-Ice/De-Ice Spray Systems:

SYSTEM FEATURES:

- Two 900 gallon "twin" tanks on 1,800 gallon system (with double suction) fits tandem axle trucks.
- 1,065 gallon tank system fits single axle trucks.
- Heavy-duty self-loading steel leg frame (Front legs rotate up as truck backs up to load unit; front wheels provide smooth roll-in).
- Individual telescoping rear legs for "bind-free" lifting.
- Adjustable height **stainless steel** boom with high-flow solid stream nozzles (spray 1, 2 or 3 lanes at once). Flooding nozzles also included for center lane.
- High flow hydraulic-drive pump; engine-drive pumps also available.
- **Raven DCS 400 Automatic Control System** or **Microtrak Roadmaster** - complete with flow meter & control valve. Pre-programmable controller with multiple application rates.
- Precise application rate in Gals/Lane-Mile; automatically maintains preset rate regardless of speed changes or the number of lanes being sprayed.
- Plumbed with polypropylene **flanged** fittings, drain/fill valve, strainer and check valves for quick & easy maintenance.
- Also great for dust control, watering subgrades & other uses.



PLANNING A LIQUID DE-ICING OPERATION?

Complete systems ready to go
- or all the components to build your own!

- Brine Production Systems
- Anti-Ice/De-Ice Spray Systems
- Storage Tanks
- Transfer & Sprayer Pumps
- Plumbing, Valves, Controls & Thousands of components!

Everything you need to set up your complete operation!





More Self-Loading Spray Systems & Booms

Omaha, Nebraska (800) 228-9666 • Davenport, Iowa (800) 553-6975

Self-Loading Anti-Ice / De-ice Sprayers

400 Series for Small Trucks & Pickups 450 Gallon Models



Self-Loading Anti-ice/Deice Sprayers can be quickly and easily loaded and unloaded into standard 8' pickup beds. No forklifts required. They include steel frames with a tough powder-coat paint finish, front wheels, rotating front legs with wheels and telescoping rear legs. They also feature low profile tanks, 2" self-priming 5.5 Honda engine pump, Pressure based rate control system, Hannay manual hose reel with 150' of 1/2" high pressure hose, 17" adjustable pattern spray gun and a 1" dry steel boom or 1-1/4" stainless wet boom. A 1" digital in-line meter is also included so you can see how much deicing product you have used on each job. Great for private contractors and government agencies! Approximately 9'8" long, 59" wide, 42" high. Skid fits inside 48" pickup bed, overall tank width is 59" at top. 1-1/4" stainless boom includes 19 solid stream and 19 fan nozzles at 5-1/2" spacing with TeeJet "QuickJet" caps. Single lane models.

Part No.	Description	Call For
DU 1A401	450 Gallon Sprayer with PB80R Steel Boom	Pricing
DU 1A401A	450 Gallon Sprayer with 1-1/4" Stainless Boom ...	Pricing

80" Boom System

for Standard Receiver Hitches & Single Lane Spraying

DU PB80R: 80" long steel boom; locks into standard 2" pickup receiver hitch. Adjustable height (8"). Includes twelve solid stream brass nozzles for effective anti-ice/de-ice spraying (8-1/2" spacing). Double "swivel" nozzle assembly each side for wider coverage (approximately 9-10'). Includes 1" hose with polypropylene camlock for quick plumbing hookup to skid sprayers. 1" Adjustable check valve included. For single lane spraying. Also available in stainless steel (DU PB80R-SS). Fan nozzles also available.



Part No.	Material	CALL for Pricing
DU PB80R	Steel	
DU PB80R-SS	Stainless	

1-1/4" Stainless Boom System

for 1 & 3 Lane Spraying - Anti-Ice / De-Ice / Dust Control



DU 1A062B-1

DU 1-1/4BOOM: 72" x 1-1/4" 304 Stainless Boom for Anti-ice/De-ice & Dust Control spraying. Boom includes 1-1/4" stainless inlet in center and 1-1/4" stainless cross each end. Stainless plug inside cross on each end allows for 1,2 or 3 lane spraying (liquid inside center portion of boom does not flow into crosses). Includes 19 1/4" stainless couplings along bottom of boom for insertion of nozzles at 5" spacing. Also includes 1" stainless couplings mounted on adjustable brackets on top of the boom for insertion of flooding nozzles.

Complete Boom Kits:

DU 1A062B-1: Pre-plumbed 1-1/4" boom system with 3 lane spraying capabilities. Includes 1-1/4" stainless steel boom, 19 solid stream nozzles with quickjet bodies and caps for anti-icing and de-icing center lane, stainless vertical pipes shown with 12 high flow solid stream nozzles and adjustable ball assemblies for anti-icing left and right lanes. This model is designed for higher speeds and higher application rates. Also includes flooding nozzles on top of boom for dust control. Note: 1-1/4" hoses and hose clamps shown are sold separately. Other variations available.

DU 1B002AK: Optional steel attachment bracket kit for boom (for pickup sprayers). Holds boom firmly inside standard 2" receiver hitch (not shown). Also allows for vertical boom adjustment (not shown). Including SS clamps.

Part No.
DU 1-1/4BOOM • DU 1A062B-1
• DU 1B002AK



Skid Mount Spray Systems for Small Trucks

Omaha, Nebraska (800) 228-9666 • Davenport, Iowa (800) 553-6975

Versatile Skid Mount Sprayer Packages for Anti-Ice/De-Ice/Weed Spraying

SYSTEM FEATURES:

- The compact, heavy-duty welded steel skid frames are made to fit in tight spaces including pickup beds.
- Powder coat paint finish on 200 & 300 gallon models for excellent durability & chemical resistance.
- Skid-Mount Sprayers featuring *Hypro* 1537 centrifugal pump (1-1/2" x 1-1/4") close-coupled to a 5.5 HP *Honda* engine (80 GPM at 40 PSI; 30 GPM at 70 PSI).
- 200, 300 or 500 gallon tanks with vented top lids & molded-in gallonage markers. (300 Gallon Tanks include stainless steel baffle).
- *Hannay* 1500 Series manual hose reel with 300' of 1/2" 600 PSI hose and 17" adjustable spray gun (*Hypro* 3381-10). Great for winter anti-ice/deicing of sidewalks and other tight places, and for summer weed spraying.
- All necessary plumbing including 2" drain-fill valve, 1-1/2" suction, bypass with relief valve & jet agitation system.
- Includes DU PB80R spray boom standard with 12 brass solid stream nozzles (fan nozzles & stainless boom also available). Boom snaps into standard 2" receiver hitch.
- Complete control systems included. See *below*.



DU 1A203
Skid Mount Spray Package
with 200 Gallon Tank &
PB80R Boom. (Control
System not shown)

PB80R
Boom

	UNIT	Length	Width	Height
Sprayer Dimensions:	200 Gal.	72"	34"	50"
	300 Gal.	93"	34"	50"
	500 Gal.	96"	40"	57"

Model No.	Description
DU 1A202	Package Complete: Skid Mount Sprayer Complete with 200 Gallon Tank, Manual Hose Reel, PB80R 80" Boom Complete and *Manual Rate Control System Complete
DU 1A202A	Same as above with 300 Gallon Skid Mount Sprayer.....
DU 1A202B	Same as above with 500 Gallon Skid Mount Sprayer.....
DU 1A203	Package Complete: Skid Mount Sprayer Complete with 200 Gallon Tank, Manual Hose Reel, PB80R 80" Boom Complete and **Automatic Rate Control System Complete.....
DU 1A203A	Same as above with 300 Gallon Skid Mount Sprayer
DU 1A203B	Same as above with 500 Gallon Skid Mount Sprayer
DU 1A204A	Package Complete: Skid Mount Sprayer Complete with 300 Gallon Tank, 3-Lane Stainless Boom, 3 On/Off Valves & 9 HP Pump. Also includes **Automatic Rate Control System Complete.....
DU 1A204B	Same as above with 500 Gallon Skid Mount Sprayer

**Call
For
Pricing**

* The Manual Rate Control System includes in-cab console (*TeeJet* 744A), regulating valve and 1" full port boom on/off valve. This is a "pressure based" control system.

** The Automatic Rate Control System includes in-cab console (*Raven* DCS400), GPS speed sensor, 1-1/2" flow meter, regulating valve and 1" full port boom on/off valve. This is a "ground speed" oriented control system.

OPTIONS

Description

12V Electric Hose Reel (*Hannay*).

Electric Start Engines & 12V Battery Holder with cables (*Battery sold separately*).

PB80R-SS 80" is the same boom in stainless steel.

Note: For Anti-ice/De-ice spraying, the 202 & 203 systems will cover one lane at up to 55 Gallons Per Lane-Mile at 30 MPH or up to 30 Gallons per Lane-Mile at 55 MPH. DU PB80R boom covers approximately 10'-12' width. Other booms also available.



Storage, Transport & Spray Tanks

Omaha, Nebraska (800) 228-9666 • Davenport, Iowa (800) 553-6975

Vertical Storage Tanks



To 15,000 Gallons



FEATURES:

- High quality polyethylene with UV protection
- Molded-in deep tie-down lugs
- 22" lids available
- Molded-in gallonage markers
- 3 year warranty
- 14 Lbs./Gal. rating (16 Lbs./Gal. available)
- Maximum Temperature is 140° F.
- 2" Polypropylene bulkhead fitting is standard; 3" and stainless fittings available
- Standard color is translucent white (yellow or black is available)
- FDA & NSF/ANSI61 approved.

Part No.	Gallonage	Diameter x Height	Bulkhead Fitting		Wt.
			Lid	Lid	
RT VT500	500	46" x 77"	2"	8"	120 lbs.
RT VT850	850	54" x 94"	2"	8"	184 lbs.
RT VT1050	1050	86" x 54"	2"	16"	192 lbs.
RT VT1350	1350	86" x 65"	2"	16"	230 lbs.
RT VT1500	1500	86" x 69"	2"	16"	252 lbs.
RT VT1650	1650	86" x 74"	2"	16"	280 lbs.
RT VT2000	2000	91" x 84"	2"	16"	377 lbs.
RT VT2000-64	2000	64" x 156"	2"	16"	467 lbs.
RT VT2050	2050	86" x 93"	2"	16"	402 lbs.
RT VT2150	2150	102" x 71"	2"	16"	417 lbs.
RT VT2500	2500	91" x 103"	2"	16"	422 lbs.
RT VT2500-96	2500	96" x 92"	2"	16"	445 lbs.
RT VT3000	3000	91" x 120"	2"	16"	552 lbs.
RT VT3000-96	3000	96" x 109"	2"	16"	582 lbs.
RT VT4000	4000	96" x 140"	2"	16"	902 lbs.
RT VT4200	4200	96" x 148"	2"	16"	952 lbs.
RT VT5000	5000	102" x 156"	3"	16"	1302 lbs.
RT VT5150	5150	102" x 161"	3"	16"	1354 lbs.
RT VT6250	6250	102" x 194"	3"	16"	1552 lbs.
RT VT6500	6500	120" x 152"	3"	16"	1503 lbs.
RT VT7000	7000	142" x 125"	3"	16"	1752 lbs.
RT VT8000	8000	120" x 180"	3"	16"	1932 lbs.
RT VT9000	9000	142" x 154"	3"	16"	2102 lbs.
RT VT9150	9150	120" x 203"	3"	16"	2202 lbs.
RT VT9500	9500	120" x 213"	3"	16"	2352 lbs.
RT VT10500	* 10500	142" x 177"	3"	16"	2502 lbs.
RT VT10500-2-3	10500	142" x 177"	(2) 3"	22"	2502 lbs.
RT VT10500-28	† 10500	142" x 177"	3"	16"	2802 lbs.
RT VT12500	†† 12500	142" x 208"	3"	16"	3402 lbs.
RT VT15500	15500	142" x 247"	3"	16"	4002 lbs.

Call For Delv'd Prices

Note: Other sizes also available. F.O.B. Factory.
 † VT10500-28 is rated to 15 lbs./Gal. †† 12,500 is Rated to 14 lbs./Gal.
 * VT10500 is rated to 13 lbs./Gal.

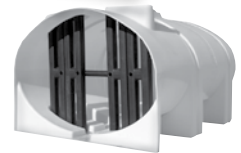
Horizontal Elliptical Leg Tanks



FS2350-88

STANDARD FEATURES

- Poly Baffle included inside tank (full height).
- 14 Lb./Gal. Rating; Elliptical shape; Free Standing.
- 3" HD Polypropylene fitting with siphon tube, opposite lid.
- Gallonage indicators one side and each end.
- Steel support hoops with powder coat paint, Black.
- Standard Off White color; Black & Yellow available.
- Ladders available for 3250-4250 gallon sizes.



Interior Baffle

TANKS

Part No.	Gallon	Fillwell	Width	Height	Length	Outlet	Wt.
RT FS1610-78	1610	16"	78"	58"	139"	3"	530 lbs.
RT FS2350-88	2350	16"	88"	63"	146"	3"	920 lbs.
RT FS2750-88	2750	16"	88"	70"	146"	3"	1150 lbs.
RT FS3250-88	3250	16"	88"	79"	146"	3"	1208 lbs.
RT FS3750-88	3750	16"	88"	91"	146"	3"	1422 lbs.
RT FS4250-88	4250	16"	88"	101"	146"	3"	1617 lbs.

Call For Delv'd Prices

HOOPS (Required for All Tanks):

Part No.	Description
RT FS1610-HP	1 Set of (4) 1-1/4" Steel Hoops with "feet" for FS1610-78....
RT FS2350-HP	1 Set of (4) 1-1/4" Steel Hoops with "feet" for FS2350-88 ...
RT FS2750-HP	1 Set of (4) 1-1/4" Steel Hoops with "feet" for FS2750-88....
RT FS3250-HP	1 Set of (4) 1-1/4" Steel Hoops with "feet" for FS3250-88 ...
RT FS3750-HP	1 Set of Steel Hoops with "feet" for FS3750-88.....
RT FS4250-HP	1 Set of Steel Hoops with "feet" for FS4250-88.....

Note: Use Hoops with above "Feet" to hold tank on flatbed without skid.

NOTE: Use Hoops with "J" suffix (i.e. RTFS2350-HPJ) for FS Tanks going on to skid below.

OPTIONAL SKID for FS2350-4250 Tanks.

Part No.	Description	Wt.
RT FS23-32SK	Skid for FS2350 - 4250 Gallon Tanks, 90" x 146"	1078 lbs.

CALL

250 & 400 Gallon Utility Tanks

— Slim Line Style —



Slim Line Storage Tank. Polyethylene Tank designed for narrow installations. Standard with polypropylene fitting with santoprene gasket and 16" vented lid. Built-in gallonage indicators are molded into each end of tank. Rated for products up to 14 lbs./Gal. Color is translucent (off-white).

Part No.	Gallons	W x L x H	Fitting
RT SPO250UT	250	62"x29"x42"	1-1/2"
RT SPO300UT	300	62"x29"x53"	1-1/2"
RT SPO400UT	400	62"x29"x66"	2"

Call For Delv'd Prices

Narrow Width 2400 Gallon Horizontal Leg Tank

Fits Inside Standard Dump Truck Beds

- Only 78" Wide -



- Only 78" Wide x 120" Long.
- 77" Tall to Manway (Less Skid).
- Molded in Baffles. 16" Top Lid.
- 3" Bulkhead Stainless Fitting.
- 2" Poly Fitting for Recirculation.
- 15 Lb./Gallon Rating.
- Hoops Included.
- Optional Steel Skid

Tank with optional skid

Part No.	Description
RT FS2400	2400 Gallon Tank without Sump
RT FS2400-SK	Skid for Tank without Sump

Call for Delivered Prices



Storage, Transport & Spray Tanks

Omaha, Nebraska (800) 228-9666 • Davenport, Iowa (800) 553-6975

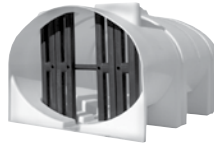
Horizontal Elliptical Leg Tanks with Sump for Complete Drainout



STANDARD FEATURES

- Poly Baffle included inside tank (full height).
- Slopes to End Sump with 3" Fitting Standard for Complete Drainout.
- 14 Lb./Gal. Rating; Elliptical shape; Free Standing.
- Gallonage indicators one side and each end.
- Steel support hoops with powder coat paint, Black.
- Standard Off White color; Black & Yellow available.
- Ladders available for 3250-4250 gallon sizes.

Ace Roto-Mold



Interior Baffle

TANKS

Part No.	Gallon	Fillwell	Width	Height	Length	Outlet	Wt./Lbs.
RT FM1610-78S	1610	16"	78"	58"	139"	3"	530
RT FM2350-88S	2350	16"	88"	63"	146"	3"	920
RT FM2750-88S	2750	16"	88"	70"	146"	3"	1150
RT FM3250-88S	3250	16"	88"	79"	146"	3"	1208
RT FM3750-88S	3750	16"	88"	91"	146"	3"	1422
RT FM4250-88S	4250	16"	88"	101"	146"	3"	1617

HOOPS (Required for All Tanks):

Part No.	Description
RT FM1610-HPJ	1 Set of (4) 1-1/4" Steel Hoops for FM1610-78S
RT FM2350-HPJ	1 Set of (4) 1-1/4" Steel Hoops for FM2350-88S
RT FM2750-HPJ	1 Set of (4) 1-1/4" Steel Hoops for FM2750-88S
RT FM3250-HPJ	1 Set of (4) 1-1/4" Steel Hoops for FM3250-88S
RT FM3750-HPJ	1 Set of Hoops for FM3750-88S
RT FM4250-HPJ	1 Set of Hoops for FM4250-88S

SKIDS (Required for All Tanks):

Part No.	Description	Wt./Lbs.
RT FM1610-SKE	Skid for FM1610-78S Tank with End Sump, 78" x 139"	490
RT FM23-32E	Skid for FM2350-4250 Gal. Tanks with End Sump, 88" x 141"	1060

Call For Delv'd Prices

Narrow Poly Vertical Tanks

55 to 1500 Gallon

Ace Roto-Mold

These Polyethylene Tanks have been designed with a narrow diameter for tight places and for use in containment dikes.

DESIGNED FOR PRODUCTS WEIGHING UP TO 14 LBS./GALLON

- Medium & High Density Polyethylene
- Ultraviolet Inhibitor
- Translucent
- Gallonage Markers
- Siphon Tube Included on 300 Gallon & Larger Tanks
- FDA & NSF/ANSI61 Approved
- 3 Year Warranty



Part No.	Gallons	Diameter	Height	Drain	Fillwell	Wt.
RT VT0055-20	55	20"	47"	1"	5"	22 lbs.
RT VT105	105	23"	65"	1"	8"	38 lbs.
RT VT0135-23	135	23"	82"	1"	16"	47 lbs.
RT VT0135-28	135	28"	59"	1"	8"	45 lbs.
RT VT0175-31	175	31"	61"	1-1/2"	8"	54 lbs.
RT VT0225-31	200	31"	76"	2"	8"	65 lbs.
RT VT0300-35	300	35"	81"	2"	8"	86 lbs.
RT VT0425-42	425	42"	75"	2"	8"	101 lbs.
RT VT0505-46	505	46"	80"	2"	16"	118 lbs.
RT VT0600-46	600	46"	91"	2"	16"	130 lbs.
RT VT0800-46	800	46"	118"	2"	16"	175 lbs.
RT VT1000-64	1000	64"	81"	2"	16"	250 lbs.
RT VT1500-64	1500	64"	115"	2"	16"	335 lbs.

Call For Delv'd Prices

— Other Sizes Available —

Spray/Transport/Nurse Tanks

Ace Roto-Mold



FS1750-62S



FS0735-48

Features: High quality polyethylene with UV protection • Heavy-duty steel skirts & hoops • 16" vented lids (22" available) • Molded-in gallonage markers • 3 year warranty • 14 Lbs./Gal. rating (16 Lbs./Gal. available) • Some models sumped • 2" Polypropylene bulkhead fitting is standard.

Tank-Less Hoops

Part No.	Size	Diameter x Length	Sump	Lid	Wt.
RT FS0735-48	735 Gallon	48" x 103"	No	16"	250 lbs.
RT FS925-DS	925 Gallon	62" x 81"	Yes	16"	290 lbs.
RT FS925-DW	925 Gallon	62" x 81"	No	16"	290 lbs.
RT FS1065-58S	1065 Gallon	56" x 106"	Yes	16"	340 lbs.
RT FS1065-58W	1065 Gallon	56" x 105"	No	16"	340 lbs.
RT FS1300-DS	1300 Gallon	62" x 114"	Yes	16"	425 lbs.
RT FS1300-DW	1300 Gallon	62" x 114"	No	16"	425 lbs.
RT FS1750-62S	† 1750 Gallon	62" x 147"	Yes	16"	540 lbs.
RT FS1750-62W	† 1750 Gallon	62" x 147"	No	16"	540 lbs.
RT FS1800-2S	* 1800 Gallon	62" x 149"	Yes	16"	580 lbs.
RT FS1800-2W	* 1800 Gallon	62" x 149"	No	16"	580 lbs.
RT FS2600-2S	2600 Gallon	62" x 212"	Yes	16"	850 lbs.
RT FS2600-2W	2600 Gallon	62" x 212"	No	16"	425 lbs.

F.O.B. Factory.

* 1800 gallon tank is a two compartment tank on a single skid.

† 1750 Gallon tanks include poly internal baffle.

Call For Delv'd Prices

Steel Hoops for Above Tanks (Required):

Part No.	Description	For Tank
RT FS048-HP	1 Set of 3 Hoops	735 Gallon
RT FS062HP	1 Set of 2 Hoops	925 Gallon
RT FS1065-HP	1 Set of 3 Hoops	1065 Gallon
RT FS062HP-1300	1 Set of 3 Hoops	1300 Gallon
RT FS062HP-17	1 Set of 4 Hoops	1750 Gallon
RT FS062HP-1800	1 Set of 4 Hoops	1800 Gallon
RT FS062HP-2600	1 Set of 6 Hoops	2600 Gallon

Call For Delv'd Prices

Skid Frames for Above Tanks (Required for Tanks with Sump):

Part No.	Description
RT FS925-SK	Skid for 925 Gallon Tank
RT FS1065-SKS	Skid for 1065 Gallon Tank with sump
RT FS1065-SKW	Skid for 1065 Gallon Tank less sump
RT FS1300-SK	Skid for 1300 Gallon Tank
RT FS1750-SK	Skid for 1750 Gallon Tank
RT FS1800-SK	Skid for 1800 Gallon Tank with sump
RT FS1800-SKW	Skid for 1800 Gallon Tank less sump
RT FS2600-SK	Skid for 2600 Gallon Tank

Call For Delv'd Prices

1010 & 3200 Gallon Total Drain Leg Tanks



3200 Gallon Elliptical

Tanks are equipped with molded-in legs to support tank and band. Locators for tie down. Designed for 14 lb./gal. liquids. 3200 Gallon Elliptical is two tanks interlocked on a single skid, with 2" fitting in each sump. Additional optional fittings can be installed. 1010 Gallon Tank is horizontal and has a 2" outlet.

Ace Roto-Mold

Tank-Less Hoops

Part No.	Size (Gallon)	Diameter x Length	Sump	Lid	Wt. Lbs.
RT FS1010-48	1010	48" x 130"	Yes	16"	350
RT FS3200-2S	3200	88" x 172" x 74"	Yes	16"	1100

Steel Hoops for Above Tank (Required):

Part No.	Description
RT FS1010-HP	1 Set of 4 - 1-1/2" Diameter Pipe
RT FS3200-HP	1 Set of 4 - 1-1/2" Diameter Pipe

Call For Delv'd Prices

Skid Frames for Above Tank (Required for Tanks with Sump):

Part No.	Description	Dia.xLgth.	Wt.
RT FS1010-SK	1010 Gallon Skid	53" x 115"	409 lbs.
RT FS3200-SK	3200 Gallon Skid	89" x 168"	1600 lbs.

Call



Transfer Pumps

Omaha, Nebraska (800) 228-9666 • Davenport, Iowa (800) 553-6975

Many Models Available!

Polyester Transfer Pumps (Motor Drive)

Deice transfer units, with **PACER** glass-filled polyester centrifugal pumps, have a *Lovejoy* shaft coupling with safety shield between the motor and pump shaft. EPDM mechanical seals. Units with TEFC, 3450-RPM, one or three phase motors in 2, 3, 5 and 7-1/2 HP are available. **All models here rated for deicing liquids.**

2 to
7-1/2-HP
Self-Priming

HEAD (in feet)	10	20	30	40	50	60
PRESSURE (PSI)	4.3	8.7	13.0	17.3	21.7	26.0
SIZE HP						
2" 2 GPM	120	100	80	60	50	25
2" 3 GPM	175	160	155	140	125	100
2" 5 GPM	175	165	150	135	125	100
* 2" 5 GPM	240	230	215	190	155	115
3" 7-1/2 GPM	275	275	250	220	180	150

* High flow units.



NOTE: 3" Units not available with the carrying handle.



Part No.	Ports	HP	Phase	Max. Specific Gravity	Volts	Wt. Lbs.	Price Ea.
DU PR2010	2"	2	1	1.2	115/230	85	\$ 1310.00
DU PR2030	2"	2	3	1.2	230/460	80	1269.00
DU PR3010-E	2"	3	1	1.7	115/230	120	1443.00
DU PR5010	2"	5	1	1.4	230	130	1668.00
DU PR5030	2"	5	3	1.4	208/230/460	110	1369.00
DU PR5010A	*2"	5	1	1.4	230	180	1675.00
DU PR5030A	*2"	5	3	1.4	208/230-460	110	1342.00
DU PR5030B	#2"	5	3	1.4	208/230-406	110	1426.00
DU PR7510	3"	7-1/2	1	1.4	230	165	2252.00
DU PR7530	3"	7-1/2	3	1.4	208/230/460	140	1948.00

* High flow series with Buna seal. # High Flow Series with Viton® Seal. Both with 975.30 Impeller.

Stainless Steel Centrifugal Pump Skid Units

For De-Icing Chemical Solutions Transfer

- Stainless Pumps & Skids
- 4 Inlet & Outlet Product Valves
- Truck Unload/Loadout Valve
- Motors are Totally Enclosed, Fan Cooled
- Start/Stop Panel (Outdoor Rated)



Part No.	Pump	Motor HP	Phase
DU BTS-MP51E	2" SS	5 HP	1
DU BTS-MP53E	2" SS	5 HP	3

CALL for PRICING

2" Self-Priming Poly Centrifugal Pumps

HYRPO, PACER & BANJO ENGINE DRIVEN PUMPS: PORTABLE, LIGHTWEIGHT, SELF-PRIMING, Rated to 12 lbs./Gal.

HYRPO®

PACER

BANJO



HYRPO HY 1542P-5SP



BANJO TK 200PH-5

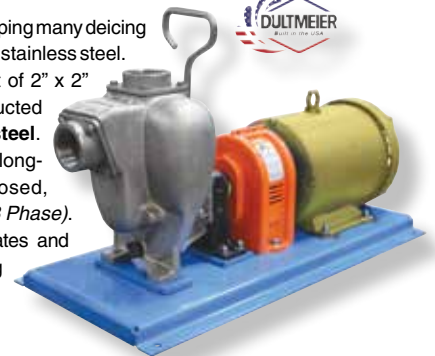
Motor Driven Units Also Available

Part No.	PUMP STYLE	Ports	Price Ea.
HY 1542P-65SP	6.5 HP Hypro with PowerPro Engine ..	2" FPT	\$ 319.00
PR SE2UL	5.5 HP Pacer with Briggs Engine	2" FPT	345.00
TK 200PH-5	5.5 HP Banjo with Honda Engine	2" FPT	604.00

316SS Stainless Self-Priming Pump Units

An excellent choice for pumping many deicing liquids compatible with 316 stainless steel.

These pump units consist of 2" x 2" self-priming pumps constructed of 316 cast stainless steel. Viton® seals. Pumps are long-coupled to Totally Enclosed, Fan Cooled motors (1 or 3 Phase). Heavy duty steel base plates and OSHA approved coupling guards with powder coat paint finish.



316 SS Pump Units

Part No.	HP	Phase	Ports	Max. S.G.	Wt. Lbs.	Price Ea.
DU TK3530-SSV	5	3	2" x 2" FPT	1.4	145	\$ 2752.00
DU TK3510-SSV	5	1	2" x 2" FPT	1.4	145	3042.00

Pump Start-Stop Auto Control Panel

For Use with 3 HP & 5HP, 1 or 3 Phase Pump Motors

- Versatile: Automartic On/Off Switch (Sold Separately).
- Main Disconnect with Lockout On Side
- Magnetic Motor Starter with 24V Coil & 24V Transformer; 24V Switch for Safety.
- Overload Protection & Fused.
- Green LED Run Light.
- Polycarbonate Enclosure & Switches are NEMA Rated for Outdoor Use.
- Approximately 12" x 10" x 6" Deep.
- UL Listed.



Part No.	Description
DU EPL3-1	Start-Stop Auto Control Panel for 3 HP, 1 PH Pump Motors
DU EPL3-3	Start-Stop Auto Control Panel for 3 HP, 3 PH Pump Motors
DU EPL5-1	Start-Stop Auto Control Panel for 5 HP, 1 PH Pump Motors

CALL for PRICING

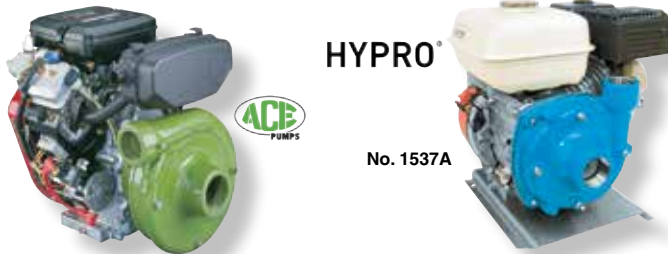


Sprayer Pumps & "Pre-Wet" Pumps

Omaha, Nebraska (800) 228-9666 • Davenport, Iowa (800) 553-6975

Engine Drive Centrifugal Sprayer Pumps

These pumps are great for high volume spraying. Cast iron pumps configured for Briggs or Honda drives. Can be purchased as a complete unit or as a wet end kit only for installation on your own engine.



HYPRO

No. 1537A

HYPRO PERFORMANCE DATA									
1536	PSI	10	20	30	40	50	60		
	GPM	104	100	94	82	70	50		
1537	PSI	10	20	30	40	50	60	70	
	GPM	110	106	96	88	80	60	30	
1550	PSI	0	10	20	30	40	50	60	70
	GPM	150	147	145	140	130	120	107	97
1538SP	PSI	80	90	100	110	120	130	140	
	GPM	87	80	69	57	45	36	16	
1538SP	PSI	10	20	30	40	50	60		
	GPM	98	87	73	60	44	21		

Part No.	Pump Size	Max.		Price Ea.
		GPM	PSI	
HY 1537A	1-1/2" x 1-1/4"	110	70	\$ 915.00
DU GE860HONDA	2" x 1-1/2"	140	140	1463.00
HY 1550	2" x 1-1/2"	150	140	1463.00
HY 1538	1-1/2" x 1-1/4" Wet End Pump Only			407.00
HY 1551	2" x 1-1/2" Wet End Pump Only			770.00

Hydraulic Drive Centrifugal Pumps

9300C Series features • Hydraulic motor drive (for open and closed center systems) • Cast iron body (stainless also available) • Double-lip Teflon hydraulic motor seal • Glass-filled nylon impeller with stainless wear ring.

HYPRO



Part No.	Description	Req'd Oil Flow	Max GPM	Max PSI	Price Ea.
HY 9306CHM1C	For open/closed center systems. 2" x 1-1/2"	12	210	115	\$ 900.00
HY 9306CHM3CB	For large open center systems. 2" x 1-1/2"	20	190	80	1028.00
HY 9306CHM5C	For open/closed center systems. 2" x 1-1/2"	15	210	95	905.00
AC FMC150HYD206	For open/closed center systems 1-1/2" x 1-1/4"	7	120	120	747.00
AC FMC200HYD210	For open/closed center systems 2" x 1-1/2"	8	200	80	876.00
AC FMC200HYD304	For open/closed center systems 2" x 1-1/2"	11	200	120	884.00
AC FMC650HYD	For open/closed center systems 1-1/2" x 1-1/4"	14.5	140	160	1065.00
AC FMC750FHYDM22	For open/closed center systems 1-1/2" x 1-1/4"	18	280	150	2095.00

Many other models including self-priming units also available.

12 Volt Electric Diaphragm Pumps

SHURflo
DIAPHRAGM
PUMPS



#8000-543-250

Many
Other
Models
Available!

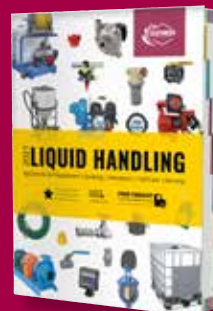
Remco
Diaphragm Pump



#550

Part No.	Volts	Max. GPM	Control	Ports	Price Ea.
SU 8000-543-250	12-DC	1.3	Internal ByPass	3/8" FPT	\$ 92.00
SU 2088-343-135	12-DC	2.9	Demand Switch	1/2" MPT	121.00
AQ 550	12-DC	5.0	Demand Switch	1/2" HB	142.00

IF YOU ARE A NEW CUSTOMER & HAVE NOT RECEIVED OUR CATALOG PLEASE CALL US



Our 500+ Page Catalog features many of the items shown in this brochure - and much more!

THE BEST CATALOG IN THE BUSINESS!

Omaha, NE

1-800-228-9666

Davenport, IA

1-800-553-6975

Or visit dultmeier.com to shop all our catalogs on-line!





Valves • Strainers • Hose

Omaha, Nebraska (800) 228-9666 • Davenport, Iowa (800) 553-6975

Large Inventories - Wholesale Prices - CALL FOR PRICING



Polypropylene BALL VALVES

Stainless Bolts • Teflon Seats •
Viton® Stem Seals



Ball Valve

Union Valve
(EPDM Seal)



Part No.	Size	Ball	Price Ea.
TK V075	3/4"	Valve	\$23.40
TK V100FP	1"	Valve	25.75
TK V125	1-1/4"	Valve	25.75
TK V150	1-1/2"	Valve	33.25
TK V200	2"	Valve	33.25
TK V200FP	2"	Valve	46.50
TK V204FP	2"	Valve	44.25
TK V300	3"	Valve	74.50
TK V300FP	3"	Valve	112.00
TK VA150	1-1/2"	Nozzle	39.50
TK VA200	2"	Nozzle	39.50
TK VA200FP	2"	Nozzle	60.00
TK UV050FP	1/2"	Union	12.00
TK UV075FP	3/4"	Union	12.00
TK UV100FP	1"	Union	15.00
TK UV125FP	1-1/4"	Union	30.75
TK UV150FP	1-1/2"	Union	30.50
TK UV200FP	2"	Union	32.25



Nozzle Valve



"Y" Line Strainers



3"

- Polypropylene
- EPDM Gaskets
- 75 PSI on 1/2" - 1-1/4"
- 150 PSI on 1-1/2" - 2"
- 50 PSI on 3"
- "T" Models Also Available



3/4"
THRU
2"

Part No.	Ports	Screen	Price Ea.
TK LS075-40	3/4" FPT	40-Mesh	\$ 21.20
TK LS075-80	3/4" FPT	80-Mesh	23.40
TK LS100-40	1" FPT	40-Mesh	21.20
TK LS125-40	1-1/4" FPT	40-Mesh	23.40
TK LS150-20	1-1/2" FPT	20-Mesh	46.50
TK LS200-20	2" FPT	20-Mesh	46.50
TK LSM300BC	3" FPT	* None	238.00

Stainless Steel screens available in the following sizes: 4, 8, 12, 20, & 50. 3" for suction side use only.



EPDM Rubber Suction/Discharge Hose

Heavy-Duty • Wire Reinforced • 100 PSI

Part No.	I.D.	O.D.	Wt./Ft.	Bend Radius	* Std.Pkg.	Price Per Foot
GD N645-1	1"	1.41"	.52 lbs.	4"	100'	\$ 3.39
GD N645-1-1/4	1-1/4"	1.65"	.62 lbs.	5"	100'	3.57
GD N645-1-1/2	1-1/2"	1.89"	.87 lbs.	7"	100'	4.28
GD N645-2	2"	2.48"	1.06 lbs.	10"	100'	5.00
GD N645-3	3"	3.54"	1.73 lbs.	12"	100'	7.33

Working pressure, bend radius & vacuum rating all at 72° F.
* 20% Discount for Standard Package

316

Stainless Steel Ball Valves

Full Port, 2-Piece
Teflon Seats

Rated to 1000 PSI W.O.G.



Locking Clip on Handles

Part No.	Ports	Diameter	Price Ea.
GN 316-14	1/4"	1/4"	\$ 13.40
GN 316-38	3/8"	3/8"	13.40
GN 316-12	1/2"	1/2"	13.60
GN 316-34	3/4"	3/4"	18.60
GN 316-100	1"	1"	28.50
GN 316-114	1-1/4"	1-1/4"	41.25
GN 316-112	1-1/2"	1-1/2"	47.00
GN 316-200	2"	2"	71.00
GN 316-300	3"	3"	228.00

Less 10% on
10+ Assorted

Less 15% on
25+ Assorted



Kanaflex & Kuriyama EPDM Suction Hose

TG200 GREEN
TY200 YELLOW

*Less 20% on 100' Roll

Abrasion Resistant Cover

Part No.	I.D.	Std. Pkg.	Working Press. PSI	Price Per Foot
* TF TG125	1-1/4"	100'	50	\$ 1.79
* TF TG150	1-1/2"	100'	60	2.05
* TF TG200	2"	100'	50	2.97
* TF TG300	3"	100'	45	5.62
* TF TG400	4"	100'	40	9.40
† KA 390SD-1-1/4	1-1/4"	100'	100	2.85
† KA 390SD-1-1/2	1-1/2"	100'	100	3.50
† KA 390SD-2	2"	100'	100	4.50
† KA 390SD-3	3"	100'	90	7.80

* Non-Braided, Suction Application ONLY; GREEN with black helix. For same hose in YELLOW - Order TFTY -... † Black.

Stainless T Bolt Clamps

Very High Torque



Part No.	Hose I.D.	Clamp I.D. Range	Std. Pkg.	Price Ea.
TK TC162	1-1/4"	1.63" to 1.88"	10	\$ 6.00
TK TC181	1-1/2"	1.88" to 2.19"	10	6.40
TK TC218	2"	2.19" to 2.50"	10	6.60
TK TC231	2"	2.31" to 2.62"	10	6.70
TK TC250	2"	2.50" to 2.81"	10	6.70
TK TC331	3"	3.31" to 3.62"	10	6.80
TK TC343	3"	3.44" to 3.75"	10	6.70
TK TC425	4"	4.25" to 4.56"	10	7.00
TK TC438	4"	4.38" to 4.69"	10	7.00

Less 10% on Packages of 10. 20% on Packages of 100.

Cam Lever Couplings

Polypropylene & Nyglas (Yellow)

- All Types & Sizes Through 4" In Stock -



Stainless & Aluminum Through 6" Also Available



Huge Assortment of Nozzles & Accessories In Stock

Omaha, Nebraska (800) 228-9666 • Davenport, Iowa (800) 553-6975




**Stainless Steel
Solid Stream & Flat Fan
Nozzles**

H1/4USS Series
Has 1/4" MPT conn.

SS4001 Series
Flat Fan

Part No.
SS H1/4USS0002 thru H1/4USS0060.....
SS SS4001 thru SS4030.....

Price Ea.
\$ 9.40
7.10



TeeJet
FloodJet Nozzles

Quick Turbo Floodjet

110° - 150° Pattern

**Less 5% on 25*

Part No.
SS QCTFVS15 thru QCTFVS80 Turbo FloodJet Nozzles
SS QCTFVS100 thru QCTFVS120 Turbo FloodJet Nozzles
SS QCKSS150 thru QCKSS210 FloodJet Nozzles

*Price Ea.
\$ 23.20
31.75
54.00


**Huge Assortment of Nozzle Bodies,
Caps, Strainers, Clamps, etc.
IN STOCK!**



Call Us for Your Specific Needs!

Flow Meters
*For Use with
De-Icing Liquids*

RAVEN INDUSTRIES



RFM100 RFM60P

Part No.	GPM	Port Size	Banjo Flanged	Material	Price Ea.
RV RFM60P	1-55	1-1/2" FPT	2" Std.	Poly	\$ 477.00
RV RFM100	5-100	2" FPT	2" FP	Poly	719.00
RV RFM200POLY	15-200	3" FPT	No	Poly	1079.00
RV RFM60S	1-60	1-1/2" FPT	No	Stainless	775.00



**BOOM BUSTER
Nozzles**

Stainless Boom Buster Nozzles are designed for use with deicing liquids on roads and bridges. Can be used as singles or in a two or three nozzle combination for selected coverage. Mount at 36" height.




Typical standard two nozzle installation showing center overlap.



Call for Models & Pricing!

SkyTrak GPS Velocity Sensor



Standard Features

- Completely self-contained (GPS receiver, antenna, 10' cable and converter)
- 0.1 MPH accuracy
- Universal Mount (Magnetic)


SkyTrak

Part No.	Used with	Price Ea.
ST 1000R	Raven	\$ 543.00
ST 1000-D	Dickey-John	543.00

With Universal Mounting Bracket

Specific Gravity Salimeters

Salimeters for measuring the concentration of salt brine. Manufactured and calibrated in accordance with NIST Circular 555 and ASTM E100-81.



Salimeters for Salt Brine Solution

**Less 5% on 5*

Part No.	Division	Length	Percentage Range	*Price Ea.
FS 11605	1%	12"	0-100% Saturation	\$ 73.50
FS 11606	0.5%	12"	0-26.4% Salt	84.70

Pavement/Air Temperature Measuring System

RoadWatch Bullet

**Warns You When
The Road Ahead
May Be Freezing!**



The RoadWatch LED Display



The RoadWatch Sensor easily mounts on any "western" mirror brackets. Mountings for other vehicle mirrors are also available.

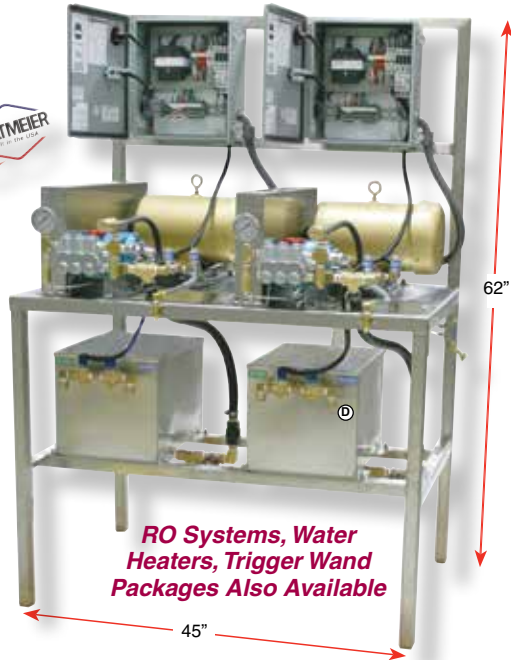
Part No.	Price Ea.
VE RWSS RoadWatch System.....	\$ 680.00



Skid Mounted Weed Sprayer Systems

Omaha, Nebraska (800) 228-9666 • Davenport, Iowa (800) 553-6975

High Pressure Wash Pumping Stations



RO Systems, Water Heaters, Trigger Wand Packages Also Available



Automatic auto shut down panels for operator control at wand.

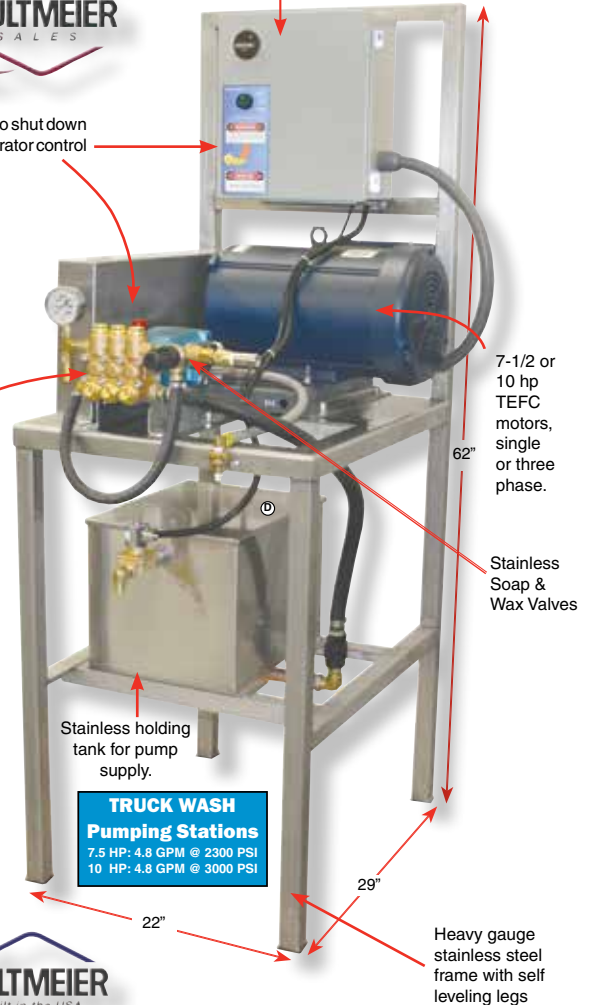
Rated Up to 185° F. Water Operating Temperature!!

No Free Freight

Choice of Pumps
 • CAT • Emperor
 • Rated to
 4.8 GPM @ 2300 PSI with 7-1/2 HP,
 4.8 GPM @ 3000 PSI with 10 HP

Some Items Built to Order - Call for Availability

Pre-wired UL listed electrical panel with solid state components.



7-1/2 or 10 hp TEFC motors, single or three phase.

Stainless Soap & Wax Valves

Stainless holding tank for pump supply.

TRUCK WASH Pumping Stations
 7.5 HP: 4.8 GPM @ 2300 PSI
 10 HP: 4.8 GPM @ 3000 PSI

Heavy gauge stainless steel frame with self leveling legs



Part No.	Pump	Motor	Output
DU PS1701C-PG	Single, Emperor	7.5 HP / 1 PH	4.8 @ 2300
DU PS1901C-PG	Single, Cat Pumps	7.5 HP / 1 PH	4.8 @ 2300
DU PS1701CPG2	Double, Emperor	7.5 HP / 1 PH	4.8 @ 2300
DU PS1901CPG2	Double, Cat Pumps	7.5 HP / 1 PH	4.8 @ 2300
DU PS1703C-PG	Single, Emperor	7.5 HP / 3 PH	4.8 @ 2300
DU PS1903C-PG	Single, Cat Pumps	7.5 HP / 3 PH	4.8 @ 2300
DU PS1703CPG2	Double, Emperor	7.5 HP / 3 PH	4.8 @ 2300
DU PS1903CPG2	Double, Cat Pumps	7.5 HP / 3 PH	4.8 @ 2300

CALL for PRICING

Drive-Through High Pressure Rinse Systems

Great Way to Clean the Underbodies & Wheel Wells of Vehicles Or Machinery

Drive-Through High Pressure Rinse Systems are a great way to clean the underbodies and wheel wells of vehicles or machinery. Protect your vehicle investments and increase vehicle life. Pump units are activated by thru-beam photo eyes when vehicles enter the rinse bay and shut-off as vehicles leave. No need to leave the vehicle.

Undercarriage Rinse System, Side Blast with Top Rinse or a combination of both are available to meet your needs. Vehicle operators can easily drive vehicles through the rinse process as slowly as needed for effective, high pressuring rinsing. The system is activated when vehicles enter and exit the rinse areas.

Spinning Stabilizer Nozzles are standard on all cleaning pans and feature high impact cleaning with excellent coverage for a variety of cleaning needs. Pre-spray or presoak chemical systems are also available if needed. *Call for information.*

Spray Pans for side blast and top rinse system are supported by 7 ft. stainless support stands that are to be permanently mounted in the bay based on your vehicle size requirements. Effective coverage is 38" when mounted 36" from vehicle.



Unique High Impact Stabilizer Nozzles



Electrical Panels
 Manufactured by
 Dultmeier



Part No.	System
DU UC221000	Undercarriage Rinse System
DU SBR271000	Side Blast & Top Rinse System
DU SBU541000	Undercarriage/Side Blast/Top Rinse System

CALL for PRICING



Box 45565
Omaha, Nebraska 68145-0565



Or Current Resident

PRSR STD
U.S. POSTAGE
PAID
OMAHA, NE
PERMIT NO. 314

OMAHA, NEBRASKA 13808 Industrial Road Omaha, NE 68137	TOLL-FREE	1-800-228-9666
	LOCAL	1-402-333-1444
	FAX No.	1-402-333-5546
	E-MAIL	dultmeier@dultmeier.com

DAVENPORT, IOWA 601 West 76th Street Davenport, IA 52806	TOLL-FREE	1-800-553-6975
	LOCAL	1-563-386-0930
	FAX No.	1-563-386-5448
	E-MAIL	davenport@dultmeier.com

**Anti-Icing/De-Icing
Equipment Inside!**



© Dultmeier Sales 2020

Liquid Anti-Icing / De-Icing Equipment Products from Dultmeier Sales!

OMAHA, NEBRASKA
13808 IND. ROAD
1-800-228-9666

DAVENPORT, IOWA
601 W. 76th ST.
1-800-553-6975

Limited Quantities Available On Some Items - Prices Subject to Change Without Notice

E-Mail: dultmeier@dultmeier.com or davenport@dultmeier.com • Web-Site: dultmeier.com

5/10/21

**Narrow Width
2400 Gallon Horizontal Leg Tank**

*Fits Inside Standard Dump Truck Beds
- Only 78" Wide -*

Ace Roto-Mold

- Only 78" Wide x 120" Long.
- 77" Tall to Manway (Less Skid).
- Molded in Baffles. 16" Top Lid.
- 3" Bulkhead Stainless Fitting.
- 15 Lb./Gallon Rating.
- Hoops Included.
- Optional Steel Skid

Tank with optional skid

Part No.	
RT FS2400	2400 Gallon Tank without Sump
RT FS2400-SK	Skid for Tank without Sump.....

**Call for
Delivered
Prices**

**Ultra Easy Cleanout
Stainless Brine Production System**

BPS3000-SS

Patent Pending.

Call Us for Details & Pricing!