

## ASSEMBLY AND OPERATING INSTRUCTIONS

1. Connect the handle to either end of the axle which doubles as a fluid path, use a suitable thread sealant and tighten accordingly.
2. Connect the swivel on the opposite end of the axle as the handle, use a suitable thread sealant and tighten accordingly.  
\* See parts list image for orientation of swivel\*
3. Attach outlet hose to the outlet fitting located in the hub, use a suitable thread sealant and tighten accordingly.
4. Attach supply hose to the hose reel swivel, use a suitable thread sealant and tighten accordingly.
5. Use 1/2" or 13 mm bolts when securing the hose reel to ceiling or wall.
6. The hose reel is ready for operation.

NOTE: THREAD SEALANT NOT INCLUDED

CAUTION: When using hardened NPT fittings DO NOT over tighten, over-tightening can result in a cracked swivel or fitting.

## SAFETY PRECAUTIONS

1. Make sure incoming pressure does not exceed the rated pressure.
2. Use proper eye protection when assembling and using the hose reel.
3. Assemble the hose reel on a clean workbench free of debris and moisture.
4. Use soap and water when checking for air leaks.
5. Keep children away from work area.

### **WARNING!**

*Exposure of skin directly to pressurized air or fluids could result in severe bodily injury!*

**Warning.** Only **trained** and **qualified** personnel should install or replace the device.

**Warning.** De-pressurize prior to servicing.

#### **General Pump**

1174 Northland Drive • Mendota Heights, MN 55120  
Phone: 651.686.2199 • Fax: 800.535.1745

www.generalpump.com • email: sales@gpcompanies.com

Ref 300946 Rev. N  
09-23



DHRA50300

# INDUSTRIAL Hose Reels

From General Pump

**DHRA50150**  
**DHRA50300**  
**DHRA50450**

- **Friction Brake**
- **Direct hand-crank rewind with folding mechanism and drum locking pin**
- **Solid steel construction**
- **Durable powder-coat finish**
- **Full flow swivel Stainless swivel with internal bearing**

## Operator's manual

Ref 300946 Rev. N  
09-23



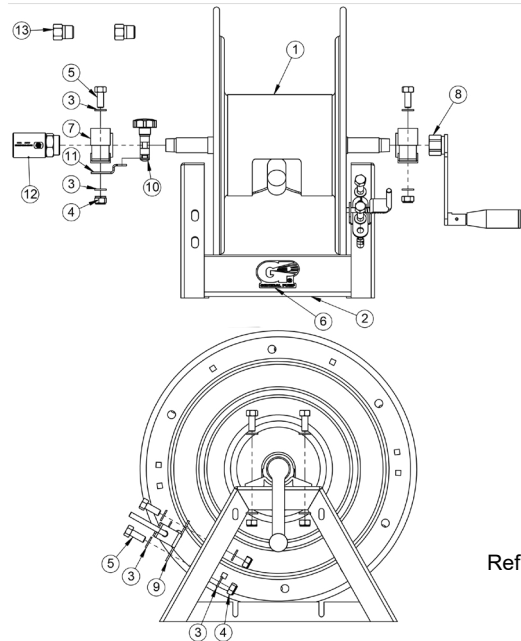
General Pump  
is a member of  
the Interpump Group



## SPECIFICATIONS

Model	3/8" Hose Capacity	5/8" Garden Hose Cap.	3/4" Garden Hose Cap.	Swivel Pressure Rating	Inlet	Outlet
DHRA50150	150 Ft.	125 Ft.	100 Ft.	5,000 PSI	1/2" NPT-F	1/2" NPT-F
DHRA50300	300 Ft.	225 Ft.	175 Ft.	5,000 PSI	1/2" NPT-F	1/2" NPT-F
DHRA50450	450 Ft.	335 Ft.	250 Ft.	5,000 PSI	1/2" NPT-F	1/2" NPT-F

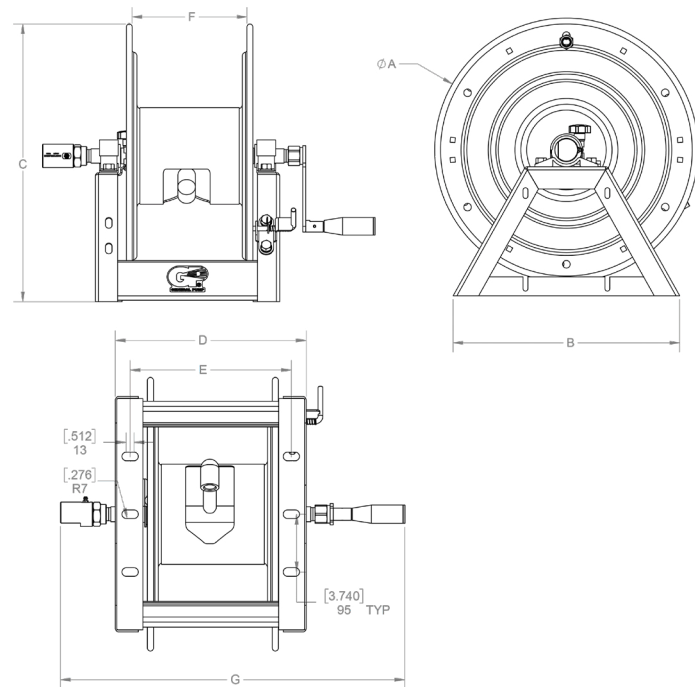
**MAXIMUM TEMPERATURE RATING: 250°F**



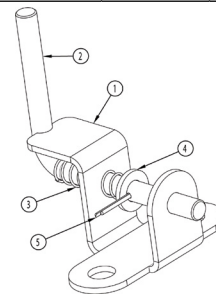
Ref 300946 Rev. N  
09-23

## PARTS LIST

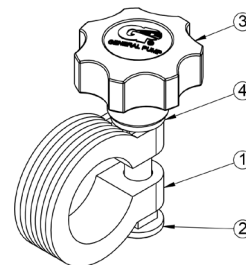
Item	Part No.	Description	QTY
1	2103321	Assy, Hub & Flange, DHRA50450	1
	2103319	Assy, Hub & Flange, DHRA50300	
	2103317	Assy, Hub & Flange, DHRA50150	
2	2103322	Frame, Hose Reel, DHRA50450	1
	2103320	Frame, Hose Reel, DHRA50300	
	2103318	Frame, Hose Reel, DHRA50150	
3	2203413	Washer, Flat, M10	12
4	2203017	Nut, M10, NYLOK, SST	6
5	2200104	Bolt, M10	6
6	2400004	Decal, GP	1
<b>Replacement Parts Below</b>			
7	2640025	Pillow Block	2
8	2103312	Assy., Crank Folding	1
9	2103245	Assy., Pin Lock	1
10	2103139	Brake Kit	1
11	2540087	Bracket, Brake	1
12	DSW9012SS	Swivel, 1/2" NPT-F, Ball Bearing	1
13	2530112	Fitting, 1/2 NPT-M x 3/8 NPT-F	2



	Dimensions inches/mm						
	A	B	C	D	E	F	G
DHRA50150	17.7/449	15.2/387	18.6/473	12.4/315	10.4/264	7.4/189	22.4/568
DHRA50300	17.7/449	15.2/387	18.6/473	17.5/445	15.5/394	12.5/319	27.5/699
DHRA50450	17.7/449	15.2/387	18.6/473	23.0/585	21.2/539	18.1/459	33.0/839



Lock Pin Repair Kit 2103245			
Item No.	Part Number	Description	QTY.
1	2540085	Bracket, Lock	1
2	2540086	Pin, Lock	1
3	2720025	Spring, Lock Pin	1
4	2200013	Washer, M8, SS	1
5	2202033	Pin, Cotter, 2x20	1



Brake Repair Kit 2103139			
Item No.	Part No.	Description	QTY.
1	2660268	Brake	1
2	2200103	Bolt, M8	1
3	2660405	Knob, Brake	1
4	2200013	Washer, M8, SS	1

Ref 300946 Rev. N  
09-23