

Polyethylene Pipe Fittings

— For Butt Fusion Welding to HDPE Pipe —

Black PE4710 Butt Fusion Fittings are manufactured and tested to meet ASTM D2513, ASTM D3261, AWWA C906, and NSF-61 regulations. Threaded transitions and long radius fittings meet ASTM F714, D3350, and D3035. Air purge fittings meet D3350, D3035, D1599 and D1598. They are compatible for heat butt fusion with black HDPE pipe or fittings manufactured from a like resin, including black HDPE pipe shown on adjacent page. SDR11 rated to 200 PSI WP @ 73° F. Temperature rated from -58° to 140° F. **Not for flammable liquids or petroleum based products.**

Transition Fittings

Carbon Steel / Epoxy Coated & Stainless Available



Part No.	Size	Transition Type
DP TR112	1-1/2"	SDR11 Pipe x MPT (Regular Bore)
DP TR2FB	2"	* SDR11 Pipe x MPT (Full-Bore)
DP TR2SS-316	2"	SDR11 Pipe x MPT (Regular Bore 316SS)
DP TR2FBSS	2"	* SDR11 Pipe x MPT (Full-Bore 304SS)
DP TR2FBSS-316	2"	* SDR11 Pipe x MPT (Full-Bore 316SS)
DP TR3FB	3"	* SDR11 Pipe x MPT (Full-Bore)
DP TR3FBSS	3"	* SDR11 Pipe x MPT (Full-Bore 304SS)
DP TR4FB	4"	* SDR11 Pipe x MPT (Full-Bore)
DP TR4FBSS	4"	* SDR11 Pipe x MPT (Full-Bore 304SS)
DP TR112KN	1-1/2"	SDR11 Pipe x King Nipple
DP TR112KNSS	1-1/2"	SDR11 Pipe x King Nipple (Stainless)
DP TR2KN	2"	SDR11 Pipe x King Nipple
DP TR2KNSS	2"	SDR11 Pipe x King Nipple (Stainless)
DP TR3KN	3"	SDR11 Pipe x King Nipple
DP TR3KNSS	3"	SDR11 Pipe x King Nipple (Stainless)
DP TR4KN	4"	SDR11 Pipe x King Nipple
DP TR4KNSS	4"	SDR11 Pipe x King Nipple (Stainless)
DP TR6KNSS-304	6"	SDR11 Pipe x King Nipple (304SS)
DP TR6KNSS	6"	SDR11 Pipe x King Nipple (316SS)

*TRFB fittings feature pipe on inside of male steel end for better corrosion resistance.

45° Elbows



Short Radius

Part No.	Size	Fitting Type
DP 45L2	2"	45° Elbow, SDR11
DP 45L3	3"	45° Elbow, SDR11
DP 45L4	4"	45° Elbow, SDR11
DP 45L6	6"	45° Elbow, SDR11
DP 45L2-LR	2"	45° Elbow, Long Rad.
DP 45L3-LR	3"	45° Elbow, Long Rad.
DP 45L4-LR	4"	45° Elbow, Long Rad.
DP 45L6-LR	6"	45° Elbow, Long Rad.
DP 45L8-LR	8"	45° Elbow, Long Rad.

Part No.	Size	Fitting Type
DP 90L114	1-1/4"	90° Elbow, SDR11
DP 90L112	1-1/2"	90° Elbow, SDR11
DP 90L2	2"	90° Elbow, SDR11
DP 90L3	3"	90° Elbow, SDR11
DP 90L4	4"	90° Elbow, SDR11
DP 90L6	6"	90° Elbow, SDR11
DP 90L8	8"	90° Elbow, SDR11
DP 90L2-LR	2"	90° Elbow, Long Radius
DP 90L3-LR	3"	90° Elbow, Long Radius
DP 90L4-LR	4"	90° Elbow, Long Radius
DP 90L6-LR	6"	90° Elbow, Long Radius
DP 90L8-LR	8"	90° Elbow, Long Radius



Short Radius

90° Elbows

Reducers



Part No.	Size	Fitting Type
DP RE2X1-1/2	2"x1-1/2"	Reducer, SDR11
DP RE3X2	3"x2"	Reducer, SDR11
DP RE4X2	4"x2"	Reducer, SDR11
DP RE4X3	4"x3"	Reducer, SDR11
DP RE6X4	6"x4"	Reducer, SDR11
DP RE8X6	8"x6"	Reducer, SDR11
DP RE10X8	10"x8"	Reducer, SDR11

Part No.	Size	Fitting Type
DP T112	1-1/2"	Tee, SDR11
DP T2	2"	Tee, SDR11
DP T3	3"	Tee, SDR11
DP T4	4"	Tee, SDR11
DP T6	6"	Tee, SDR11
DP T8	8"	Tee, SDR11



Tees



Crosses

Part No.	Size	Fitting Type
DP CR2	2"	Cross, SDR11
DP CR3	3"	Cross, SDR11
DP CR4	4"	Cross, SDR11
DP CR6	6"	Cross, SDR11
DP CR8	8"	Cross, SDR11

80 PSI Working Pressure Rating

45° Wyes

80 PSI Working Pressure Rating



Part No.	Size	Fitting Type
DP Y2	2"	* 45° Wye, SDR11
DP Y3	3"	* 45° Wye, SDR11
DP Y4	4"	45° Wye, SDR11
DP Y6	6"	45° Wye, SDR11
DP Y8	8"	45° Wye, SDR11

* 2" & 3" Wyes are Molded & Rated to 200 PSI W.P.

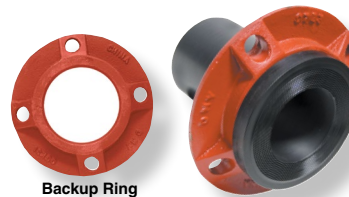
Flange Adapters

Use with Back-Up Rings Shown Below



Caps Also Available.

Part No.	Size	Fitting Type
DP FA112	1-1/2"	Flange Adapter, SDR11
DP FA2	2"	Flange Adapter, SDR11
DP FA3	3"	Flange Adapter, SDR11
DP FA4	4"	Flange Adapter, SDR11
DP FA6	6"	Flange Adapter, SDR11
DP FA8	8"	Flange Adapter, SDR11
DP FA12	12"	Flange Adapter, SDR11



Backup Ring

Shown with Flange Adapter

Iron & 304SS Back-Up Rings

Iron Rings Coated with Red Oxide Paint Available in 2" - 24" Sizes

Square x Square or Beveled x Square Styles

Part No.	Size	Fitting Type
DP BR112	1-1/2"	Iron Backup Ring for FA112
DP BR2	2"	Iron Backup Ring for FA2
DP BR3	3"	Iron Backup Ring for FA3
DP BR4	4"	Iron Backup Ring for FA4
DP BR6	6"	Iron Backup Ring for FA6
DP BR8	8"	Iron Backup Ring for FA8
DP BR10	10"	Iron Backup Ring for FA10
DP BR12SS	1-1/2"	304SS for FA112
DP BR2SS	2"	304SS for FA2
DP BR3SS	3"	304SS for FA3
DP BR4SS	4"	304SS for FA4
DP BR6SS	6"	304SS for FA6
DP BR8SS	8"	304SS for FA8
DP BR12SS-B	1-1/2"	304SS for FA112
DP BR2SS-B	2"	* 304SS for FA2
DP BR3SS-B	3"	* 304SS for FA3
DP BR4SS-B	4"	* 304SS for FA4

* Beveled x Square Style. ID beveled on one side to accommodate type "A" stub ends.

Air Purge Fitting

Stainless Steel Insert Molded Into Sidewall



Part No.	Description
DP APF2	3/4" SS FPT in 2" Pipe.
DP APF3	3/4" SS FPT in 3" Pipe.
DP APF4	3/4" SS FPT in 4" Pipe.
DP APF4-1	1" SS FPT in 4" Pipe....
DP APF4-1-1/2	1-1/2" SS FPT in 4" Pipe
DP APF6	3/4" SS FPT in 6" Pipe.