

E3030 Malleable Iron Pipe Fittings - 150 Lb.

* NOTE: For Nitrogen, NH3 & Propane Products: Use Stainless Steel or Forged Steel. Malleable Iron Fittings are not Recommended.

EXAMPLE HOW TO ORDER: US 676-2 (For 2" Black) or US G676-2 (For 2" Galvanized)

Couplings



SIZE	US 676 (Black)	US G676 (Galv.)	*Std. Pkg.
	1/8"		
1/4"			120
3/8"			120
1/2"			120
3/4"			75
1"			50
1-1/4"			16
1-1/2"			18
2"			12
2-1/2"			8
3"			12
4"			3
6"			-

* Std. Package Discount - 10%

45° Elbows



SIZE	US 620 (Black)	US G620 (Galv.)	*Std. Pkg.
	1/8"		
1/4"			80
3/8"			150
1/2"			100
3/4"			60
1"			30
1-1/4"			20
1-1/2"			15
2"			12
2-1/2"			6
3"			5
4"			4
6"			3

* Std. Package Discount - 10%

Crosses



SIZE	US 661 (Black)	US G661 (Galv.)	*Std. Pkg.
	1/8"		
1/4"			30
3/8"			25
1/2"			45
3/4"			30
1"			15
1-1/4"			10
1-1/2"			8
2"			5
2-1/2"			3
3"			2
4"			2
6"			-

* Std. Package Discount - 10%

90° Elbows



SIZE	US 601 (Black)	US G601 (Galv.)	*Std. Pkg.
	1/8"		
1/4"			120
3/8"			90
1/2"			100
3/4"			35
1"			30
1-1/4"			20
1-1/2"			15
2"			8
2-1/2"			12
3"			8
4"			2
6"			2

* Std. Package Discount - 10%

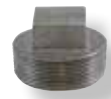
90° Street Elbows



SIZE	US 613 (Black)	US G613 (Galv.)	*Std. Pkg.
	1/8"		
1/4"			200
3/8"			120
1/2"			90
3/4"			35
1"			90
1-1/4"			50
1-1/2"			9
2"			8
2-1/2"			10
3"			6
4"			4
6"			-

* Std. Package Discount - 10%

Plugs



SIZE	US 183 (Black)	US G183 (Galv.)	*Std. Pkg.
	1/8"		
1/4"			100
3/8"			300
1/2"			300
3/4"			180
1"			120
1-1/4"			40
1-1/2"			30
2"			30
2-1/2"			16
3"			16
4"			6
6"			4

* Std. Package Discount - 10%



Unions

SIZE	US 645 (Black)	US G645 (Galv.)	*Std. Pkg.
	1/8"		
1/4"			40
3/8"			40
1/2"			50
3/4"			35
1"			20
1-1/4"			15
1-1/2"			10
2"			6
2-1/2"			4
3"			4
4"			4

* Std. Package Discount - 10%



45° Street Elbows

SIZE	US 622 (Black)	US G622 (Galv.)	*Std. Pkg.
	1/8"		
1/4"			80
3/8"			60
1/2"			70
3/4"			50
1"			40
1-1/4"			20
1-1/2"			25
2"			30
2-1/2"			15
3"			10
4"			6

* Std. Package Discount - 10%



Caps

SIZE	US 675 (Black)	US G675 (Galv.)	*Std. Pkg.
	1/8"		
1/4"			240
3/8"			180
1/2"			150
3/4"			80
1"			50
1-1/4"			20
1-1/2"			18
2"			12
2-1/2"			40
3"			24
4"			6
6"			4

* Std. Package Discount - 10%

Tees



SIZE	US 631 (Black)	US G631 (Galv.)	*Std. Pkg.
	1/8"		
1/4"			75
3/8"			45
1/2"			60
3/4"			35
1"			20
1-1/4"			14
1-1/2"			12
2"			8
2-1/2"			8
3"			6
4"			2
6"			-

* Std. Package Discount - 10%

EXAMPLE HOW TO ORDER Reducers & Bushings: US 678-2X1-1/2 (Large Size x Small Size)

Bell Reducers



SIZE	US 678 (Black)	US G678 (Galv.)	*Std. Pkg.
	1/4"		
3/8"			100
1/2"			75
3/4"			90
1"			60
1-1/4"			30
1-1/2"			25
2"			12
2-1/2"			10
3"			6
4"			3
6"			3

* Std. Package Discount - 10%

Bushings



SIZE	US 181 (Black)	US G181 (Galv.)	*Std. Pkg.
	1/4"		
3/8"			200
1/2"			300
3/4"			150
1"			100
1-1/4"			60
1-1/2"			25
2"			30
2-1/2"			15
3"			12
4"			5
6"			4

* Std. Package Discount - 10%