

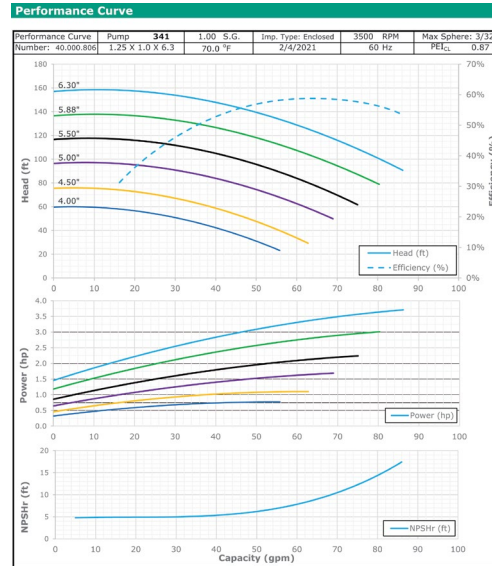
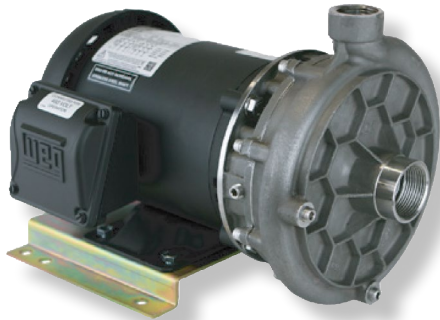
# Scot Motorpump 341 & 346 Series



## Motorpump 341 Series

**Scot Pump** introduced the **341 Series** in late 2023. This series supersedes the 331 Series, which replaced the long-standing 231 Series. A major benefit of advancing to the new 341 Series is the 304SS investment cast housing. The honeycomb design allows for greater design strength. This J56 frame pump housing allows installers to put a pipe wrench onto the housing without crushing it – try that with other stamped stainless-steel pumps and it will collapse the housing. The 341 Series is an exact footprint match of the 331 Series. **Note: Repair Parts do NOT interchange between 231/331/341 Series.**

- Max PSI:** 67
- Max GPM:** 80
- Housing:** 304SS
- Size:** 1.25" x 1" FPT Ports
- Impeller:** Polymer (PPS-GF) Enclosed, Max 6.3"
- HP:** 1/2HP to 5HP
- Hertz:** 60Hz
- RPM/Enclosure:** 3500RPM/ODP, TEFC, Explosion Proof
- Motor Voltage:** 3PH: 208-230/460V, 200V, 575V  
1PH: 115/230V



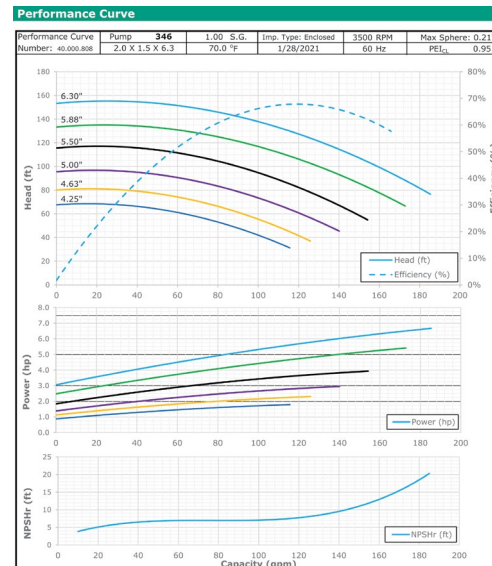
Part No.	Ports	Motor Type	RPM	Impeller	HP/PH	S.G.	Seal	Max GPM
SC 3487K107WPE	1.25" x 1" FPT	TEFC	3500	4.38"	1HP/3PH	1.15	EPDM-Carb/SIL	60
SC 3487K106WPE	1.25" x 1" FPT	TEFC	3500	4.38"	1HP/3PH	1.15	Viton®-Carb/SIL	60
SC 3487K108W	1.25" x 1" FPT	TEFC	3500	4.38"	1.5HP/1PH	1.5	Viton®-Carb/SIL	60
SC 3487K110WPE	1.25" x 1" FPT	TEFC	3500	4.75"	3HP/3PH	2.3	Viton®-Carb/SIL	67



## Motorpump 346 Series

**Scot Pump** introduced the **346 Series** in late 2023. While this new series does not supersede the 236 Series, anyone with a Scot 236 should look to the 346 Series for significant upgrades. A major benefit of advancing to the new 346 Series is the 304SS investment cast housing. The honeycomb design allows for greater design strength. This JM frame pump housing allows installers to put a pipe wrench onto the housing without crushing it – try that with other stamped stainless-steel pumps and it will collapse the housing. The 346 Series is an exact footprint match of the 236 Series. **Note: Repair Parts do NOT interchange between 236 & 346 Series.**

- Max PSI:** 67
- Max GPM:** 180
- Housing:** 304SS
- Size:** 2" x 1.5" FPT Ports
- Impeller:** Polymer (PPS-GF) Enclosed, Max 6.3"
- HP:** 2HP to 7.5HP
- Hertz:** 60Hz
- RPM/Enclosure:** 3500RPM/ODP, TEFC, Explosion Proof
- Motor Voltage:** 3PH: 208-230/460V, 575V  
1PH: 115/230V



Part No.	Ports	Motor Type	RPM	Impeller	HP/PH	S.G.	Seal	Max GPM
SC 3490K104WPE	2" x 1.5" FPT	TEFC	3500	5.0"	5HP/3PH	1.87	Viton®-Carb/CM	160
SC 3490K105WPE	2" x 1.5" FPT	TEFC	3500	5.0"	5HP/3PH	1.87	EPDM-Carb/CM	160