



## Electro Motor Vacuum Motors



Q6600-020T



QM6600-135T\*  
Quiet

**High-Quality Vacuum Motors Designed, Wound, Assembled and Tested in the USA.** (Many other common motors used in the market are imported).

These motors are an ideal choice as replacement motors in Car and Truck Wash Vacuums as well as Carpet Extractor Machines and a variety of other uses. Peripheral Bypass and Tangential Bypass Designs in either 2 or 3 stage. 5.7" Diameter on all motors. Heights, Amps and CFM vary as shown.

- Double ball bearing design for added durability
- 120volt, 50/60Hz, (240volt also available)
- 9" power leads with quick connect terminals
- Grounding spade standard on all models
- UL/CUL Listed and RoHS compliant
- Replaceable brushes for extended motor life

**Common Replacement Motors, Many others available**

**Model Q6600-020T** is a common replacement for Ametek 116336 & 119414

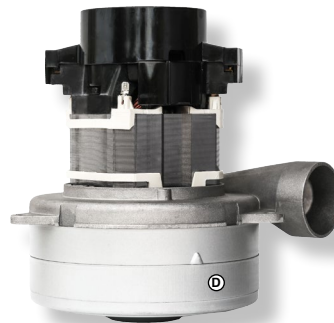
**Model QM6600-135T** is a common replacement for Ametek 116757  
\* Quiet version

**Model Q6600-033T** is a common replacement for Ametek 116392

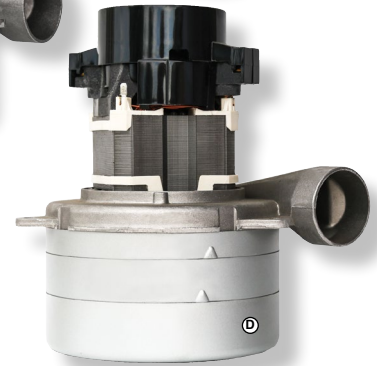
**Model Q6600-052A** is a popular High CFM Electro Motor model

**Model Q6600-166A** is a common replacement for Ametek 116565

**Model Q6600-066A** is a common replacement for Ametek 116765



Q6600-052A



EM Q6600-166A  
EM Q6600-066A



Q6600-033T



0101-004  
Brush Kit

Part No.	Volts/Stage	Bypass Type	CFM	Amps	Height
EM Q6600-020T	120v, 2 stage	Peripheral	96	7.3	6.65"
EM QM6600-135T	*120v, 2 stage	Peripheral	94	8.1	6.70"
EM Q6600-033T	120v, 2 stage	Tangential	98	8.0	6.70"
EM Q6600-052A	120v, 2 stage	Tangential	129	14.6	6.70"
EM Q6600-166A	120v, 3 stage	Tangential	97	10.7	8.0"
EM Q6600-066A	120v, 3 stage	Tangential	106	12.9	8.0"
EM 0101-004	Kit of 2 brushes for all above motors				

\* Quiet Version has 6-7 lower decibel output than standard motors

FOLLOW US ON TWITTER @dultmeier



FOLLOW US ON FACEBOOK @Dultmeier Sales