



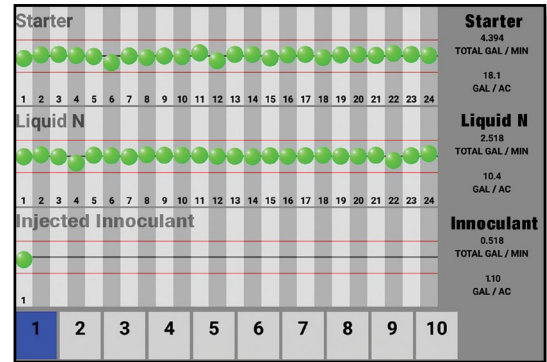
Electronic Flow Monitoring System

Designed for AgChemical & Liquid Applications

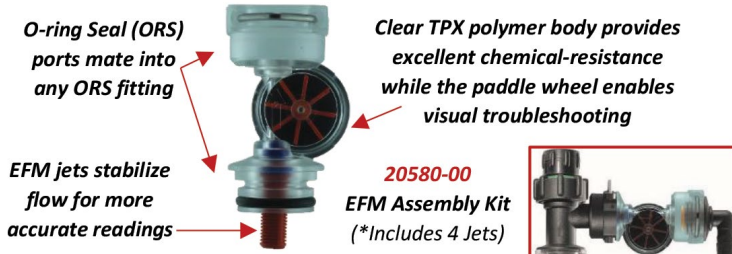


The **Wilger Electronic Flowmeter (EFM)** is a fully serviceable electronic flowmeter & monitoring system specifically designed for agricultural chemical & liquid applications. Like visual ball flow indicators, the EFM system monitors variations in flow rate, but has the added benefit of electronic readouts of actual flow—not just relative flow—for each row. The patented electronic flowmeters feature stabilizing jets for improved flow rate accuracy and consistency across a broad flow range. Plus, as part of Wilger's O-ring seal (ORS) fittings, the EFM can be easily configured as a new system or retrofitted into an existing visual flow indicator system as an electronic upgrade.

Relying on wireless ECU technology and a user-friendly Android interface, the Wilger EFM eliminates sole reliance on visual flowmeter monitoring—delivering real-time, row-by-row monitoring accuracy and precision performance even in dark conditions.



Example Screen of Electronic Flow Monitoring App
Free Android download at www.Wilger.net



*Jets include snap-in strainers for easy handling

Jet Color*	Part #	Flow (us gpm)
GREEN	20581-01	up to 0.12
RED	20581-03	0.10-0.31
BLUE	20581-05	0.18-0.98
BLACK	20581-07	0.57-1.53



System Highlights:

- Monitor up to 196 meters on up to 10 sections
- Customize & monitor up to 3 products simultaneously
- Compact & low maintenance—components are completely serviceable & replaceable
- ORS design enables retrofit installation into existing systems
- Eliminates visibility difficulties when applying dark liquids or during dark/dusty conditions
- Keyed Deutsch connectors ensure correct connections
- Easy to install, Easy to use—wireless WI-FI connection to in-cab Android tablet (no data required); Tablet not included
- Stabilizing jets accurately measure flow rates of 0.024 – 1.5 US GPM

Electronic Flowmeter Starter Kits (Single Product)

Part No.	Description
DU EFM12-N	EFM Core Kit, 12 Row, New Install
DU EFM16-N	EFM Core Kit, 16 Row, New Install
DU EFM24-N	EFM Core Kit, 24 Row, New Install
DU EFM12-R	EFM Core Kit, 12 Row, Retrofit
DU EFM16-R	EFM Core Kit, 16 Row, Retrofit
DU EFM24-R	EFM Core Kit, 24 Row, Retrofit

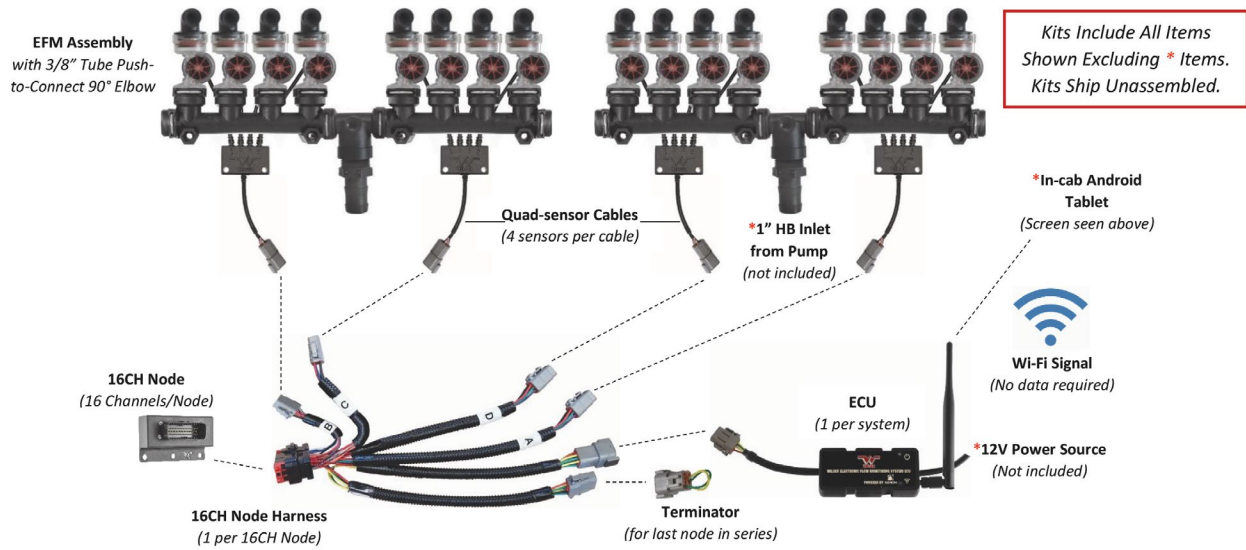
New Installs includes ECU, 16CH Node & Harness, Manifolds, EFM Assemblies, 3/8" 10# Check Valves/Caps & 3/8" Tubing in required Qty. *Retrofits* include same as New Install kits less Manifold fittings, Check Valves/Caps & Tubing.

Extension Cables (as required)

Part No.	Description
WL 20616-12	Extension Cable, ECU/Node-Node, 12 Ft.
WL 20616-24	Extension Cable, ECU/Node-Node, 24 Ft.
WL 20615-06	Extension Cable, Node-Sensor, 6 Ft.....
WL 20615-12	Extension Cable, Node-Sensor, 12 Ft.
WL 20615-24	Extension Cable, Node-Sensor, 24 Ft.
WL 20605-00	ECU Y-Splitter Cable with Terminator

Note: Extension Cables & Metering Orifices sized per application—not included in EFM Kits at left. Call for assistance with your specifications.
Android Tablet Not Included In Any Kits!

Illustration of An Assembled 16-Row, Single Product EFM System



— Additional Configurations Available, Please Call With Specifications —