

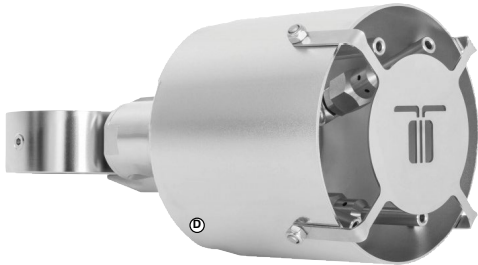


Wheel Blaster, Side Blaster Cleaning Pans

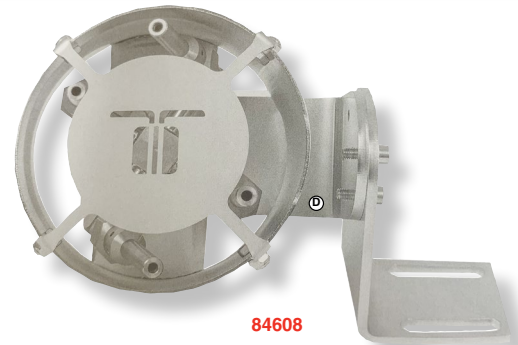
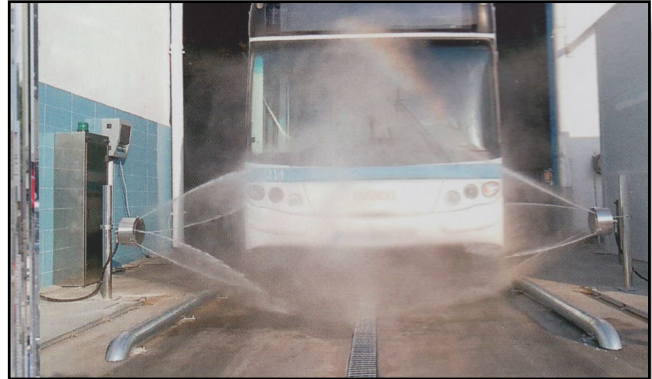


Wheel and Side Blaster pans from *Mosmatic* are ideal for effective cleaning and high pressure rinse of wheels, tires, wheel wells, rocker panels and sides of vehicles. The perfect choice for car wash, truck wash, and industrial cleaning. Polished stainless construction.

Wheel Blaster Pans are 5" diameter. Available in floor mount or pole mount styles. Both are adjustable for angle changes as necessary. Standard with high impact stabilizer nozzles which can effectively clean from 10" to 40" from vehicle surface. Two nozzle pans require 5-6 GPM at 1000 PSI. Four nozzle pans require 9-12 GPM at 1000 PSI. Rated to 4000 PSI and 250° F. Stainless steel.



84587



84608

Part No.	Style	* Nozzles	Inlet	Wt.
MM 84589	Pole mount	2	3/8"	7 lbs.
MM 84587	Pole mount	4	1/2"	9 lbs.
MM 84608	Floor mount	4	1/2"	9 lbs.

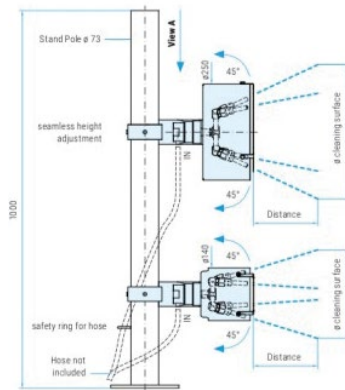
* Flow orifices not included and must be matched to flow and pressure of pump

Side Blaster Pans are 10" diameter. Pole mount style with height adjustment clamps for 3" pipe. Pans are adjustable for angle changes as necessary. Standard with high impact stabilizer nozzles. which can effectively clean from 10" to 40" from the vehicle surface. Two nozzle pans require 5-6 GPM at 1000 PSI. Four nozzle pans require 9-12 GPM at 1000 PSI. Rated to 4000 PSI and 250° F. Stainless steel.

Floor Mount Poles and extensions for Side Blaster Pans with adjustable clamp brackets. Heavy-duty, 3" diameter, stainless steel construction. Up to 2 extension poles can be added to floor pole for extra height if needed.



84597



Action Diameter		
Distance	Cleaning Surface	
	ø250	ø140
250 mm	450 mm	300 mm
500 mm	700 mm	500 mm
750 mm	950 mm	700 mm
1000 mm	1200 mm	830 mm

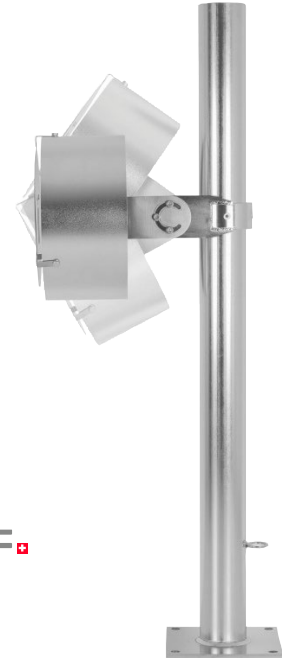
903986 Pole

Part No.	Style	* Nozzles	Inlet	Wt.
MM 84599	Pole mount	2	3/8"	11 lbs.
MM 84597	Pole mount	4	1/2"	11 lbs.
MM 84598	Pole mount	4	3/4"	11 lbs.
MM 903986	SS floor pole	39" Length		16 lbs.

* Flow orifices not included and must be matched to flow and pressure of pump



84907 Pole Extension



903986 Pole

Part No.	Style	Length	Wt.
MM 903986	SS floor pole	39"	16 lbs.
MM 84907	SS pole extension	39"	16 lbs.