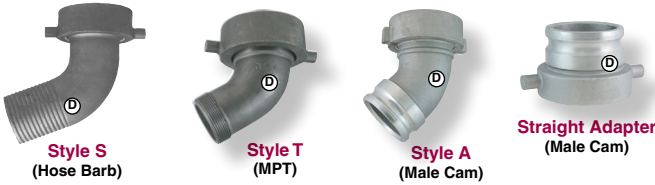


Rail Car Connectors

Standard with 5" RR Tank Thread & Buna Gaskets



ANGLED CONNECTORS

Part No.	Style	Size
EV ATCS40	Type "S" Aluminum.....	4"
EV TCT30	Type "T" Malleable Iron	3"
EV TCT40	Type "T" Malleable Iron	4"
EV ATCT30	Type "T" Aluminum.....	3"
EV ATCT40	Type "T" Aluminum.....	4"
EV RTCA30	Type "A" Stainless	3" Cam
EV RTCA40	Type "A" Stainless	4" Cam
EV RTCA40-A	Type "A" Aluminum.....	4" Cam

STRAIGHT ADAPTERS

	Size
EV 300TCAAL Aluminum Cam	3"
EV 400TCAAL Aluminum Cam	4"

REPLACEMENT GASKETS

EV 500GTAF1 Fiber Gasket	5"
EV 500GTABU Buna N Rubber Gasket *	5"

* Viton® & Teflon Gaskets Also Available.

— Other Models Available —

Dixon EZLink™ Armless Cam & Groove Couplers

Push-to-Connect, Low Profile, Positive Locking System and More!

APPLICATIONS:

- Transfer and/or unloading of fuels (*gasoline or diesel*) from tank truck to storage tanks.
- Transfer of water and solutions compatible with aluminum and Buna-N rubber.

Couplings and dust caps are A356 aluminum (*Stainless steel also available*). Coupler tabs and springs are 316 stainless steel. Gaskets are Buna-N.

Features: Automatic couplers push-to-connect providing a reliable connection
 • Low profile allows easy connection and disconnection in tight applications
 • **Safe:** Coupler tabs cannot be pushed to disconnect when pressurized to 20 PSI or greater • Maximum working pressure with band clamps is 100 PSI.

Note: Only use EZ Link™ gaskets for this coupling system. Traditional cam and groove gaskets, or other types of seals are not compatible and will fail.

Replaceable Tabs

Requires Special Buna Gaskets

Stainless Available

(See Tabs & Gaskets Below)

EZLink™
Dust Cap



EZLink™
Shank
Coupler

Part No.	Description
EZ L200-C-AL	2" Coupler X Hose Shank, Aluminum
EZ L200-DC-AL	2" Dust Cap, Aluminum
EZ L300-C-AL	3" Coupler X Hose Shank, Aluminum
EZ L300-DC-AL	3" Dust Cap, Aluminum
EZ L400-C-AL	4" Coupler X Hose Shank, Aluminum
EZ L400-DC-AL	4" Dust Cap, Aluminum
EZ LCL400	Optional Safety Clip. Fits 2", 3" & 4"
EZ L200RPLKIT	Repair Kit for 2"
EZ L300RPLKIT	Repair Kit for 3" & 4"
EZ LG-200	2" Buna Gasket
EZ LG-300	3" Buna Gasket
EZ LG-400	4" Buna Gasket

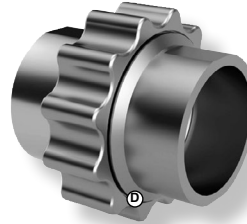
Viton® is a registered trademark of DuPont Performance Elastomers

Stop-Lok™ Couplers

OPW Stop-Lok™ Multi-application Couplers are engineered for high heat, high pressure, and demanding liquid transfer applications. Offering a more secure connection than traditional Kamvalok® camlock couplers, Stop-Lok™ couplers feature an innovative tool-free locking design and cannot be overtightened; simply hand tighten the scalloped collar, and "when it stops, it's locked." The tightening sleeve protects dual O-ring seals that offer enhanced leak protection and helps prevent thread galling. A smooth-bore design ensures optimal, unrestricted flow through the entire fitting without any variation in pipe diameter. Stop-Lok™ couplers are made of 316 stainless steel and engineered to operate up to 400 PSI and temperatures from -20° F to 400° F depending on the seal type*.

Couplings below have FNPT connections with FKM (*Viton®*) seals. Multiple other connection types and seal options available.
 *Confirm product chemical compatibility against seal selection!

NOTE: Two-piece construction – Must order coupler half and corresponding adapter half for complete coupling. Halves sold separately.



Part No.	Type	Size/Style
OP SLC07V	Coupler	3/4" FPT
OP SLC10V	Coupler	1" FPT
OP SLC15V	Coupler	1-1/2" FPT
OP SLC20V	Coupler	2" FPT
OP SLC30V	Coupler	3" FPT
OP SLA07	Adapter	3/4" FPT
OP SLA10	Adapter	1" FPT
OP SLA15	Adapter	1-1/2" FPT
OP SLA20	Adapter	2" FPT
OP SLA30	Adapter	3" FPT

Safety "Bumps"™ for Camlock Hose Ends

A great alternative to traditional cam & groove camlock plugs & adapters caps. Safety Bumps include a large comfortable handle and a "bump" that extends beyond the coupler handles to protect the ears & other surfaces from damage. Very tough & durable: constructed of glass-filled polypropylene; tested to 1,000 drops from a 6' height.

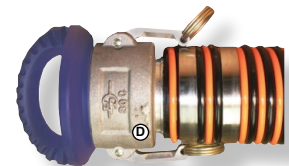
FEATURES:

- Extends life of expensive camlock couplers & adapters by protecting them from dropping or transport damage.
- Much better control for driver's including better hand protection.
- Standard Models (*Blue*) are for use with water, fertilizer, oils and other non-flammable liquids compatible with Polypropylene & Viton®.
- Petrochemical Models (*Black*) are compatible with all petrochemical products including alcohols as well as many chemicals & corrosive liquids (*includes anti-static additive*).
- Premium gaskets (*Viton® equivalent*) & zinc-plated pins.
- Food grade Models also available (*White*).
- Safety Locks shown below are economical and superior to Velcro Straps for preventing camlock coupler ears from opening when connected.

STANDARD MODELS

Blue - for use with Water, Fertilizer, Oils and other Non-Flammable Products:

Part No.	Description
SB M2S	2" Male Plug
SB M3S	3" Male Plug
SB M4S	4" Male Plug
SB F2S	2" Female Cap
SB F3S	3" Female Cap
SB F4S	4" Female Cap

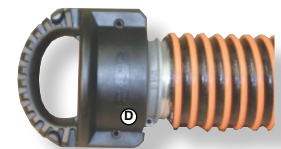


Male Plug

PETRO-CHEMICAL MODELS

Black with Anti-Static Additive:

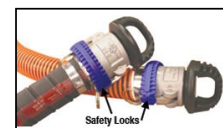
Part No.	Description
SB M2	2" Male Plug
SB M3	3" Male Plug
SB M4	4" Male Plug
SB F2	2" Female Cap
SB F3	3" Female Cap
SB F4	4" Female Cap



Female Cap

SAFETY LOCKS™

Part No.	Description
SB SL1	1" Safety Lock
SB SL15	1-1/2" Safety Lock
SB SL2	2" Safety Lock
SB SL3	3" Safety Lock
SB SL4	4" Safety Lock



Safety Locks