

Series 43 Crimp Fittings — Plated Steel —

43 Series Plated Steel Crimp Fittings for use with a wide variety of hydraulic hose, like Parker short shell style. 1-Piece construction that works well with Parker dies and crimping machines. 1/4" thru 3/8" Fittings are rated to 6,000 PSI working pressure 1/2" thru 1" fittings are rated 4,000 PSI working pressure. Always confirm the pressure rating of your hose for safety.

Male MPT Solid

Part No.	Hose I.D.	Thread
PA 10143-4-4	1/4"	1/4" MPT Solid
PA 10143-4-6	3/8"	1/4" MPT Solid
PA 10143-6-4	1/4"	3/8" MPT Solid
PA 10143-6-6	3/8"	3/8" MPT Solid
PA 10143-6-8	1/2"	3/8" MPT Solid
PA 10143-8-8	1/2"	1/2" MPT Solid
PA 10143-12-12	3/4"	3/4" MPT Solid
PA 10143-16-16	1"	1" MPT Solid

Male MPT Swivel

Part No.	Hose I.D.	Thread
PA 11343-4-4	1/4"	1/4" MPT Swivel
PA 11343-6-6	3/8"	3/8" MPT Swivel
PA 11343-8-8	1/2"	1/2" MPT Swivel
PA 11343-12-12	3/4"	3/4" MPT Swivel
PA 11343-16-16	1"	1" MPT Swivel

Female FPT Solid

Part No.	Hose I.D.	Thread
PA 10243-4-4	1/4"	1/4" FPT Solid
PA 10243-6-6	3/8"	3/8" FPT Solid
PA 10243-8-8	1/2"	1/2" FPT Solid
PA 10243-12-12	3/4"	3/4" FPT Solid



Male MPT Solid



Female FPT Solid

Series 43 Stainless Crimp Fittings — 316SS —

43 Series Stainless Crimp Fittings are for use with a wide variety of high pressure and hydraulic hoses with 1SN (100R1), 2SN (100R2), R16 and R17 ratings. Can be used with crimping machines or swagers. One piece, 316SS construction. All ends are NPT pipe thread but other thread ends are available. Solid and swivel styles as shown. (Note: For use with hoses marked for Series 43 fittings, see hose specifications). HY and BW Series fittings are also available upon request.

Series 43 Stainless

Part No.	Hose I.D.	NPT Thread
TT SS43MP44	1/4"	1/4" Male Solid....
TT SS43FPX44	1/4"	1/4" Female Swivel
TT SS43MP66	3/8"	3/8" Male Solid....
TT SS43FPX66	3/8"	3/8" Female Swivel
TT SS43MP88	1/2"	1/2" Male Solid....
TT SS43FPX88	1/2"	1/2" Female Swivel
TT SS43MP1212	3/4"	3/4" Male Solid....
TT SS43FPX1212	3/4"	3/4" Female Swivel
TT SS43MP1616	1"	1" Male Solid.....
TT SS43FPX1616	1"	1" Female Swivel .

CALL for CURRENT PRICING

RR2 Series Reusable Hose Fittings — 316SS —

These **316SS Reusable Fittings** are for use with double braid high pressure and hydraulic hoses with SAE100R2 or 2SN (100R2) ratings. Hose x Male NPT solid ends. 2-Piece design allows for hoses to be repaired in the field with a common vise and wrenches.

RR2 Series Reusable Fittings

Part No.	Hose I.D.	NPT Thread
TT SSRR2MP44	1/4"	1/4" Male Solid
TT SSRR2MP66	3/8"	3/8" Male Solid
TT SSRR2MP88	1/2"	1/2" Male Solid
TT SSRR2MP1212	3/4"	3/4" Male Solid
TT SSRR2MP1616	1"	1" Male Solid

CALL for CURRENT PRICING



Brass Reusable Couplings



Two-piece stem and ferrule assemblies. Easy to install and remove. Standard with Solid MPT ends.

Brass fittings are rated to 300 PSI and are primarily for low pressure liquid or air applications.

OD hose size is critical to a proper fit on all fittings.

Brass Construction

Part No.	ID	OD	THREAD	Max. PSI
AB 183-4084	1/4"	.50"	1/4"	300 PSI
AB 183-4086	1/4"	.50"	3/8"	300 PSI
AB 183-6114	3/8"	.69"	1/4"	300 PSI
AB 183-6116	3/8"	.69"	3/8"	300 PSI
AB 183-6118	3/8"	.69"	1/2"	300 PSI
AB 183-8146	1/2"	.88	3/8"	300 PSI
AB 183-8148	1/2"	.88	1/2"	300 PSI

MP Series Power Crimp Fittings — Plated Steel —



Mega-Crimp Fittings for use with 1-wire, 2-wire and thermoplastic hoses. Used with swagers or crimping machines. One piece design. Commonly used for hose repair or new assemblies. Available in solid or swivel styles.

Part No.	Hose I.D.	Thread Type
GA 4G4MP	1/4"	1/4" MPT Solid.....
GA 4G4MPX	1/4"	1/4" MPT Swivel.....
GA 4G4FP	1/4"	1/4" FPT Solid.....
GA 4G4FPX	1/4"	1/4" FPT Swivel.....
GA 4G4FJX	1/4"	1/4" JIC Female Swivel
GA 4G6MP	1/4"	3/8" MPT Solid.....
GA 4G6MPX	1/4"	3/8" MPT Swivel.....
GA 6G4MP	3/8"	1/4" MPT Solid.....
GA 6G4MPX	3/8"	1/4" MPT Swivel.....
GA 6G6MP	3/8"	3/8" MPT Solid.....
GA 6G6MPX	3/8"	3/8" MPT Swivel.....
GA 6G6FP	3/8"	3/8" FPT Solid.....
GA 6G6FPX	3/8"	3/8" FPT Swivel.....
GA 6G6FJX	3/8"	3/8" JIC Female Swivel
GA 6G8MP	3/8"	1/2" MPT Solid.....
GA 6G8MPX	3/8"	1/2" MPT Swivel.....
GA 8G6MP	1/2"	3/8" MPT Solid.....
GA 8G6MPX	1/2"	3/8" MPT Swivel.....
GA 8G8MP	1/2"	1/2" MPT Solid.....
GA 8G8MPX	1/2"	1/2" MPT Swivel.....
GA 8G8FP	1/2"	1/2" FPT Solid.....
GA 8G8FPX	1/2"	1/2" FPT Swivel.....
GA 8G8FJX	1/2"	1/2" JIC Female Swivel
GA 12G8MP	3/4"	1/2" MPT Solid.....
GA 12G8MPX	3/4"	1/2" MPT Swivel.....
GA 12G12MP	3/4"	3/4" MPT Solid.....
GA 12G12MPX	3/4"	3/4" MPT Swivel.....
GA 12G12FPX	3/4"	3/4" FPT Solid.....
GA 16G12MP	1"	3/4" MPT Solid.....
GA 16G16MP	1"	1" MPT Solid.....

10% Discount on Pkg. of 10



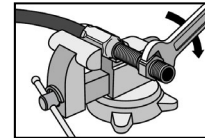
Reusable Couplings — Plated Steel —



Two-piece stem and ferrule assemblies. Easy to install and remove. Standard with Solid MPT or Swivel MPT ends.

Plated steel fittings are for hydraulic applications. Pressure ratings vary.

OD hose size is critical to a proper fit on all fittings.



Plated Construction

Part No.	ID	OD	THREAD	Max. PSI
GA 4C1T-4RMP	1/4"	.53"	1/4" MPT Solid	3000 PSI
GA 6C1T-4RMP	3/8"	.69"	1/4" MPT Solid	3000 PSI
GA 6C1T-6RMP	3/8"	.69"	3/8" MPT Solid	3000 PSI
GA 6C1T-6RMJ	3/8"	.69"	3/8" JIC Male	3000 PSI
GA 6C1T-6RFJX	3/8"	.69"	3/8" JIC Female	3000 PSI
GA 8C1T-6RMP	1/2"	.82"	3/8" MPT Solid	2000 PSI
GA 8C1T-8RFJX	1/2"	.82"	1/2" JIC Female	2000 PSI
GA 8C1T-8RMP	1/2"	.82"	1/2" MPT Solid	2000 PSI
GA 4C2AT-4RMP	1/4"	.58"	1/4" MPT Solid	4000 PSI
GA 6C2AT-6RMP	3/8"	.73"	3/8" MPT Solid	4000 PSI
GA 6C2AT-6RFJX	3/8"	.73"	3/8" JIC Female	4000 PSI
GA 8C2AT-8RMP	1/2"	.86"	1/2" MPT Solid	3500 PSI
GA 8C2AT-8RFJX	1/2"	.86"	1/2" JIC Female	3500 PSI
GA 6C1T-6RMPX	3/8"	.69"	3/8" Swivel MPT	3000 PSI
GA 8C1T-8RMPX	1/2"	.82"	1/2" Swivel MPT	3000 PSI
GA 12C1T-12RMPX	3/4"	1.10"	3/4" Swivel MPT	1200 PSI

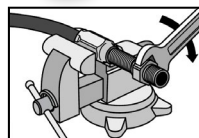
10% Discount on Pkg. of 10

Reusable Hose End Couplings — 42 Series - Plated Steel —



42 Series Plated Steel Reusable Fittings are for use with a wide variety of Parker hydraulic hose as well as others. 2-Piece stem and ferrule assemblies for field installation. Available with solid or swivel MPT ends as shown. Pressures rated to applicable hose sizes and ratings. Check hose specifications for correct fitting series. 1/4" thru 3/8" fittings are rated to 4,000 PSI working pressure. 1/2" fittings are rated to 3,500 PSI working pressure. 3/4" fittings are rated to 2,250 PSI working pressure. 1" fittings are rated to 2,000 PSI working pressure. Always confirm the pressure rating of your hose for safety.

OD hose size is critical to a proper fit on all fittings.



Part No.	I.D.	O.D.	Thread
PA 20142-4-4	1/4"	.66"	1/4" MPT Solid
PA 21342-4-4	1/4"	.66"	1/4" MPT Swivel
PA 20142-4-6	3/8"	.81"	1/4" MPT Solid
PA 20142-6-6	3/8"	.81"	3/8" MPT Solid
PA 21342-6-6	3/8"	.81"	3/8" MPT Swivel
PA 20142-8-8	1/2"	.94"	1/2" MPT Solid
PA 20142-12-12	3/4"	1.22"	3/4" MPT Solid
PA 20142-16-16	1"	1.55"	1" MPT Solid