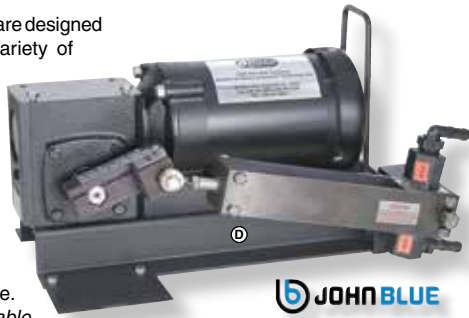


## Irrigation Injection

### Chemical Injection Metering Pumps

**E-Z Meter Pumps** are designed to inject a wide variety of chemical products at pressures up to 150 psi. Injection ranges from 1.6 to 470 GPH (*gallons per hour*). All wetted parts are 316SS or chemically resistant polypropylene. (*Teflon also available for acid applications*). Also features double ball built-in check valves and replaceable piston cups.



**JOHNBLUE**

Pumps are easily maintained and serviced. Injection rates can be changed by a simple change of the stroke on the piston. Pumps are available in a single piston design or in a double pump design for higher capacities or for injecting 2 different products or 2 injection rates.

Pump drives are available in 1 Phase or 3 Phase electric motors, gas engine, 12 Volt or belt/pulley drive where you supply the power source. 1 Phase motors are 110-220 Volt, 3 Phase motors are 220-440 Volt.

#### Simplex Single Piston Units

Part No.	GPH	Drive Design	Wt.	Net Ea.
BU 10620	5-30	1/2 HP, 1 Phase.....	68 lbs.	\$ 1339.00
BU 20620	5-30	1/2 HP, 3 Phase.....	68 lbs.	1149.00
BU 01620	5-30	Pulley Drive - No Motor .....	50 lbs.	1293.00
BU 11630	10-100	1/2 HP, 1 Phase.....	68 lbs.	1341.00
BU 21630	10-100	1/2 HP, 3 Phase.....	68 lbs.	1269.00
BU 01630	10-100	Pulley Drive - No Motor .....	50 lbs.	1421.00
CE VM3538	1/2HP, 3 Phase Motor for 20620 & 21630 .....			189.00

#### Duplex Double Piston Units

Part No.	GPH	Drive Design	Wt.	Net Ea.
BU 10622	5-30, 5-30	1/2 HP, 1 Phase.....	75 lbs.	\$ 2365.00
BU 20622	5-30, 5-30	1/2 HP, 3 Phase.....	75 lbs.	2217.00
BU 01622	5-30, 5-30	Pulley Drive - No Motor .....	55 lbs.	1939.00
BU 10623	5-30, 10-100	1/2 HP, 1 Phase.....	75 lbs.	2419.00
BU 20623	5-30, 10-100	1/2 HP, 3 Phase.....	75 lbs.	2382.00
BU 01623	5-30, 10-100	Pulley Drive - No Motor .....	55 lbs.	2048.00
BU 10633	10-100, 10-100	1/2 HP, 1 Phase.....	75 lbs.	2619.00
BU 20633	10-100, 10-100	1/2 HP, 3 Phase.....	75 lbs.	2446.00
BU 01633	10-100, 10-100	Pulley Drive - No Motor .....	75 lbs.	2163.00

*Note: Flow Rates are shown per side.*



#### Every Time I Call to Order An Item

*"I receive the utmost attention, support, assistance and understanding of the equipment. It is mostly nice to have a live operator answer the phone. Cannot say enough about their excellent service.*

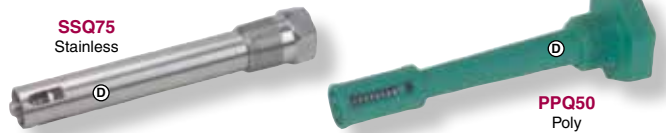
*Also, I frequently phone on a weekend and I receive an e-mail on Monday morning telling me they got the order and it is being shipped."*

Lou Ann

Viton® is a registered trademark of DuPont Performance Elastomers

## Injection Check Valves

**Injection Check Valves** allow chemicals to be injected into the turbulent flow near the center of the line, providing more uniform dispersion. The disk type check and seat are located at the tip of the check valve to allow constant flushing.



#### Mounting

Mounts directly to a coupling in the sidewall of lines 6 inches and larger. For smaller lines the check valve may be mounted to a coupling attached to a nipple (*of the length required*), to hold the tip of the check valve near the center of the line.

#### Features:

- Provides Back Pressure to Insure Metering Accuracy.
- Prevents Back Flow.
- Prevents Bleed Through When Water Pressure is Low or Line is Drained.
- Prevents Siphoning When Metering Pumps are Off and Line is Flowing.

**Specifications:** 3/4" NPT Line Connection • Check Material is Viton® • Spring Material is 316SS • Maximum Pressure is 150 PSI.

Injection Check Valves:	Inlet	Flow†	Max.		
Part No.	Material	Size	GPH	Temp.	Net Ea.
CX PPQ50	Polypropylene	1/4"	50	120° F.	\$ 27.70
CX SSQ75	Stainless	1/2"	200	150° F.	135.75

† At 50 PSI Differential. **5% on 12 Units**

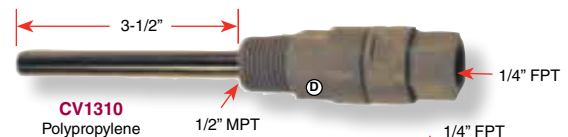
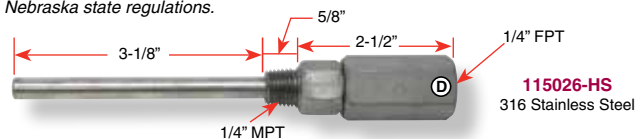
The **Bleeder Valve from Agri-Inject** is versatile and simple - and is the perfect complement to the Mister Mist® injection check valve. Put the two together to create an unbeatable assembly for controlling and adjusting your chemigation system - or use the bleeder valve alone for small-scale irrigation in nurseries or greenhouses.

#### Bleeder Valves:

Part No.	Body	Inlet	Outlet	Net Ea.
CX MMBP	Poly	1/4" FPT	1/4" MPT	\$ 14.25

## JOHNBLUE Injection Check Valves

316 Stainless Steel or Polypropylene construction. Viton® internals. Not suitable for sulfuric acid. Heavy spring loaded check valve offers added protection against siphoning effect, and prevents backup of water into the solution system. Injection tube places solution near the center of the irrigation pipe for positive mixing. 1/4" FPT x 1/4" MPT. 6.3" Long. Flow is 100 GPH. Opening pressure: 10 PSI. **Note: Meets Nebraska state regulations.**



Part No.	Material	Net Ea.
BU 115026-HS	316 SS Check Valve .....	\$ 70.50
BU CV1310	Polypropylene Check Valve .....	21.20
BU CV1310-BL	Polypropylene Check Valve with Bleeder Valve.....	28.00
BU 115040	Repair Kit for 316SS Valve .....	21.50

**See Injection Pump Replacement Parts on Our Website**

**www.dultmeier.com or Scan QR Code Below**

