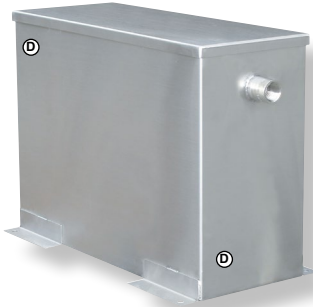


Tanks & Tank Fittings

Fittings for Poly or Fiberglass Tanks



Stainless Steel Float Tanks

Ideal for use with float valves for water supply to wash stations. Heavy 18-gauge construction. Tanks have 6" high internal baffles to reduce turbulence. Outlet fittings are on bottom side. Standard with foot flanges for mounting.

WT3B: 6" wide x 11" high x 15" long. (1) 1/2" FPT inlet. (1) 3/4" FPT outlet.

WT5B: 18" wide x 11" high x 15" deep. (1) 3/4" FPT inlet port. (1) 1" FPT outlet ports.

Part-No.
DU WT3B S.S. Float Tank
DU WT5B S.S. Float Tank

Float Tank with Lid

Plastic Float Tank for water supply to pumping units. Dimensions: 13" long x 5" wide x 6" deep. Molded 3/4" MPT outlet in bottom of tank is raised to prevent sediment from entering flow line. Lid is included.

ST-8K Adapter Kit: 1/2" MPT x 1/2" MPT with lock nuts for plumbing float valves to ST10-11 tanks.



Part-No.
NP ST10-11 Float Tank with Lid
NP ST8K Adapter Kit.....



Polypropylene Tank Fittings

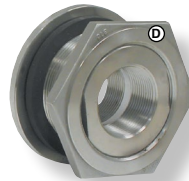
- Double Sided Threads
- Standard with EPDM Gasket, Viton® Fluoroelastomer Is Optional



Part No.	FPT Size	Hole Size	EPDM Gasket	VITON® Gasket
TK TF050	1/2"	1-5/8"	150G	150GV
TK TF075	3/4"	1-5/8"	150G	150GV
TK TF100	1"	2-1/4"	200G	200GV
TK TF125	1-1/4"	2-1/4"	200G	200GV
TK TF150	1-1/2"	3"	300G	300GV
TK TF200	2"	3"	300G	300GV
TK TF220	2"	3-1/4"	TF220G	TF220GV
TK TF300	3"	4-1/2"	TF300G	TF300GV
TK TF400	4"	5-3/4"	-	-
RT 10508	2", 3"	Santoprene Gasket.....	-	-

316 Stainless Steel Tank Fittings

Double Sided Threads • Standard with EPDM Gaskets • Viton® Gaskets are Available



Part No.	Size	Outside Diameter
TK TF075SS	3/4"	1-5/8"
TK TF100SS	1"	2-1/4"
TK TF125SS	1-1/4"	2-1/4"
TK TF150SS	1-1/2"	3"
TK TF200SS	2"	3"
TK TF220SS	2"	3-1/4"
TK TF300SS	3"	4-3/8"

Stainless Steel Wall Mount Tank



Wall Mount Storage Tank. Ideal design where space is a problem. Can be used for brush, tire cleaner, presoak systems, etc. Stainless steel construction. Complete unit includes tank, shelf and lid. Dimensions are 10" x 12" x 6". Bottom outlet is 1/2" FPT. Lid designed for use with hydrominders.

Part No.
DD 61012 Stainless Steel Wall Tank with Stand.....

Fillwells, Covers & Accessories



Part No.	Size	Description
DT 5479R	10"	Fillwell.....
RV 63484	5"	Lid, (New Style after 2001).....
DT 5478R	10"	Lid, (New Style after 2001).....
RV 60011	16"	Lid with 4" Vent Cap.....
SN 34300012	16"	Lid with 5" Vent & Ring.....
SN 343000226	5"	Vent Cap for 34300012 Lid.....
RV 67104	-	Vent Only for 5478R 10" Lid.....
RV 63480	8"	Lid with Blue Snap-In Vent, After 2/2/2008.....
RV 63485	16"	Lid with Blue Snap In Vent & Ring.....
DT ST10W	-	14-Mesh Basket Strainer for 10" Fillwell.....
RV 60366	-	Gasket for 5" Lid.....
DT 5078R	-	Gasket for 10" Lid.....
RV 5449R	1'0"	Poly Welding Rod.....
RV 5469R	4"	Threaded Vent Cap for ARAG 12", 16" & 20" Lids.....

Multi-Compartment Holding Tanks

Stainless Steel Multi-Compartment Holding Tanks for soap, wax, brush detergents, tire cleaners, etc. Can be easily plumbed for float valves or mixing valves.



2208 is similar to WT33 a two compartment tank. Dimensions are 24" H x 24" D x 12" W. Each compartment is 6" wide with (1) 3/4" FPT inlet at top and (1) 3/4" FPT outlet in bottom. Lid is removable.

WT33 is a three compartment tank which is ideal for multi-colored brush or wax systems. Dimensions are 24" H x 12" D x 18" W. Each compartment is 5" wide with (1) 1/2" FPT inlet and (1) 3/8" FPT outlet in the lower front. This tank is designed to be wall mounted and includes brackets. Lid is removable.

WT33

4275 is a large holding tank for use with multiple pumps. Dimensions are 24" H x 24" D x 36" W. Water compartment features (1) 3/4" FPT inlet and (6) 3/4" FPT outlets in bottom. Soap and wax compartments feature (1) 1/2" FPT inlet and (3) 1/2" outlets. Lid is hinged for easy access.



Part No. **S.S. Tank**
DD WT33 3-Compartment
DD 2208 2-Compartment
DD 4275 3-Compartment

Viton® is a registered trademark of DuPont Performance Elastomers